

<b>Base Price:</b>	<b>\$225,644.00</b>
<b>This Home Displays The Following Options:</b>	
6/12 Roof Slope	3,724.00
Medium Gable	1,456.00
Premium Color Vinyl Siding	1,166.00
3.5" Window and Door Lineals	1,856.00
Pella Lifestyle Windows	6,455.00
Upgrade Carpet (Southwind)	2,101.00
Gas Fireplace	8,220.00
Vaulted Ceilings (LR, DR, Kit.)	1,610.00
6 Panel Oak Doors (x11)	2,805.00
Interior French Doors w/Glass	1,550.00
Brushed Nickel Bathrooms	1,165.00
BN Pull-down Kitchen Faucet	295.00
Laundry Area w/Cherry Cabs.	1,220.00
Laundry Tub	149.00
Extra 3/4 Bath	2,450.00
Double Sink Vanity	725.00
Corner Whirlpool Tub	3,200.00
Recessed Medicine Cabinet (x2)	130.00
Vanity Base Drawers (x3)	396.00
Shower Door (Bath #1)	575.00
Cultured Granite Vanity Tops (both baths)	734.00
Seneca Ridge Cherry Cabinets (disc)	4,265.00
Deluxe Drawers & Plywood Ends	680.00
Lazy Susan	550.00
Custom Cabinets	361.00
Ceramic Tile Backsplash	595.00
Crown Molding Above Cabinets (22')	440.00
Mullion Glass Cabinet Door	161.00
Whirlpool Dishwasher (WDF310)	674.00
Vented Rangehood to Exterior	200.00
Paddle Fan/Light (x3)	576.00
Upgrade Kitchen Lighting	264.00
Hi-Definition Kit. Countertops	422.00
Quartz Kitchen Sink	549.00
36" Wide Snack Bar	48.00
Walk-Out Bay w/Proline Windows	7,065.00
Window Grilles (x7)	700.00
Suntubes (x3)	2,385.00
Upgrade Front Door (S684HRRN)	604.00
2 - 6' Pella LS Patio Doors	9,698.00

**Total With Options Shown: \$297,863.00**

**Model #3**  
**28x76 4-Sec Ranch**  
**2128 sq. ft.**

*Design Homes, Inc.*

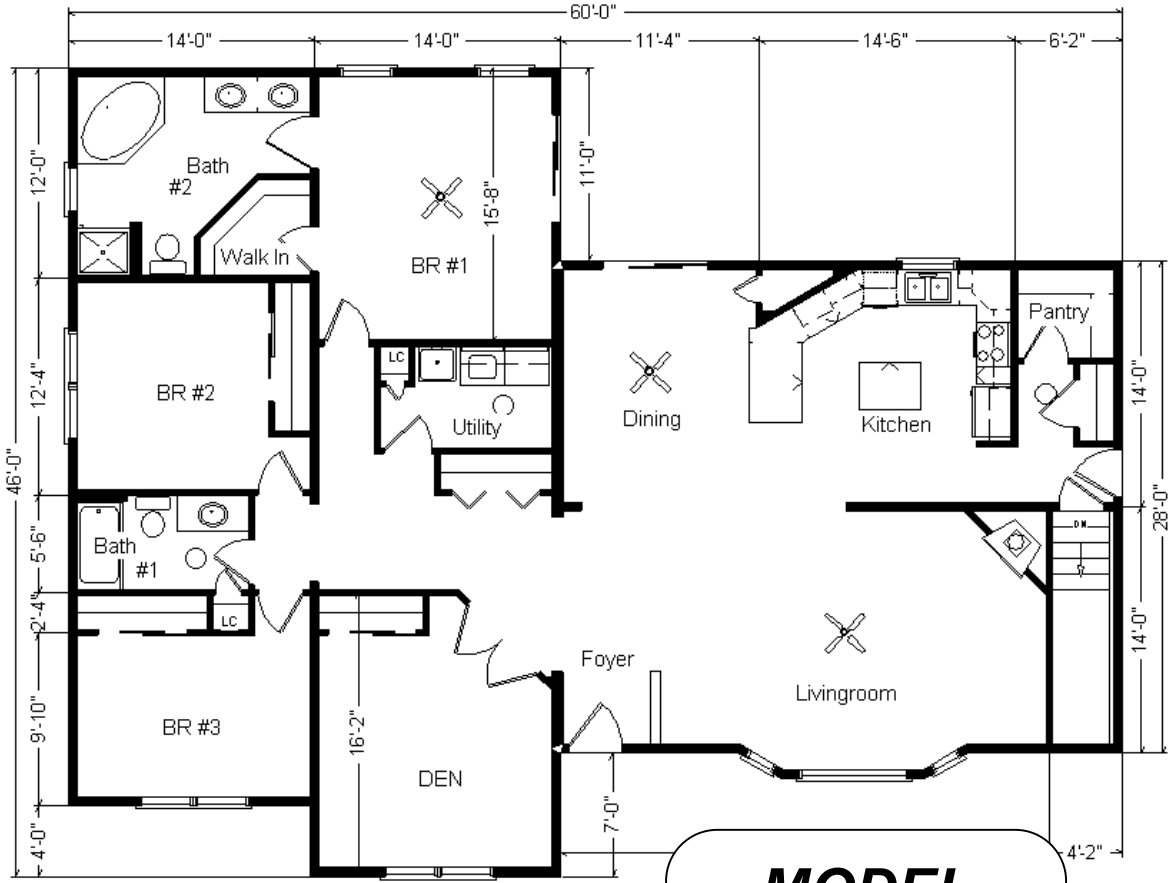
**Urbana, IA**  
**(#10321 -4-4)**

Aug. 2024

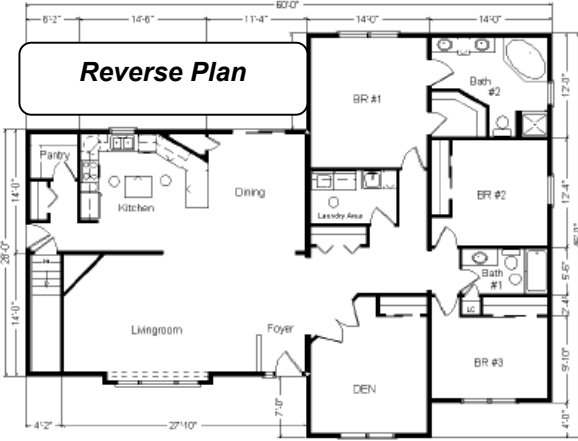


Prices are Subject to Change

MN #BC146710



**Color Information**  
*Hearthstone Siding, White Corners, White Trim, Weatherwood Shingles, White Window Lineals, Bisque Baths, #431 Vanity Tops, Mascot Carpet, 91082 Vinyls, #839 KCC Laminate Flooring, Cherry Oak Trim & Doors, Black DW & Rangehood, White Pella Dble-hung Windows w/Cherry Stain Interiors, Golden Mascarella Countertop, Beige FP Front*



**Price Includes: Crane Setting, All Blueprints, R55 Ceilings, R21 Exterior Walls, Kohler Plumbing, Pella Windows, 200 Amp Service, All Applicable Tax and Much More!!**  
**\*See Sales Rep For Any Applicable Delivery Fees**

**MODEL FOR SALE!**  
**\$248,716.00**  
**(\$49,147 Discount!)**