

Model #4
Rustic Loft
 1,260 sq. ft.

Design Homes, Inc.

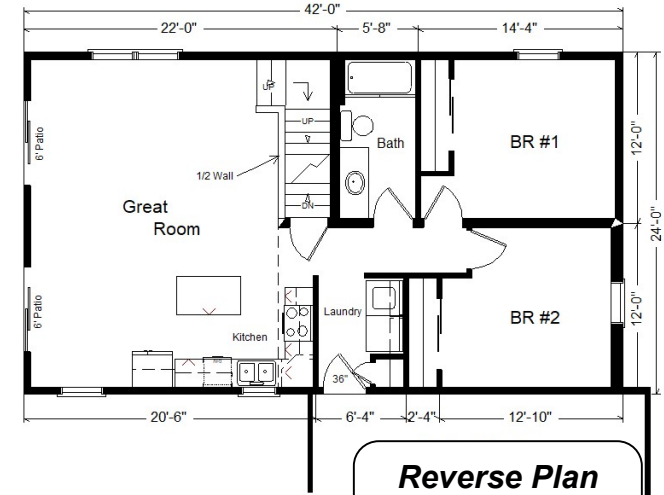
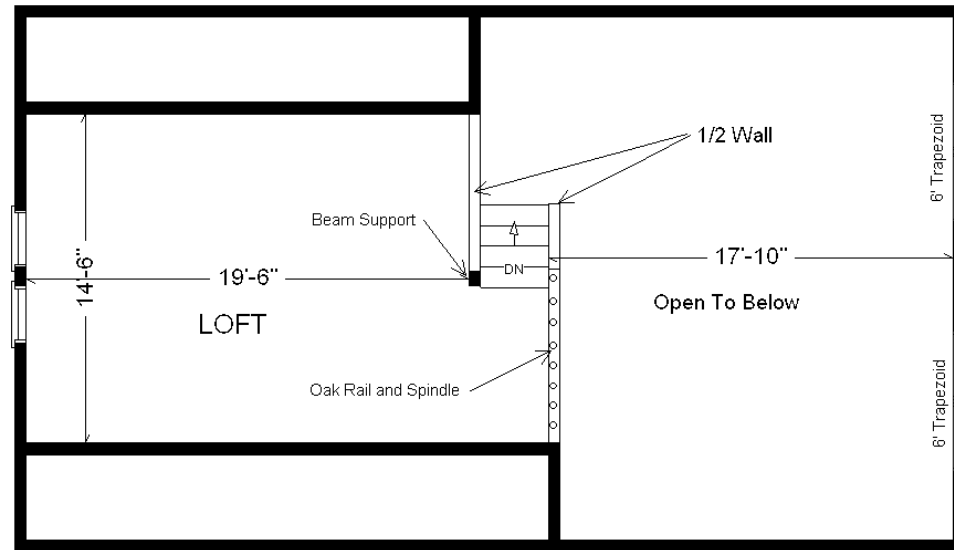
Plover, WI
 (#10478-6-6)



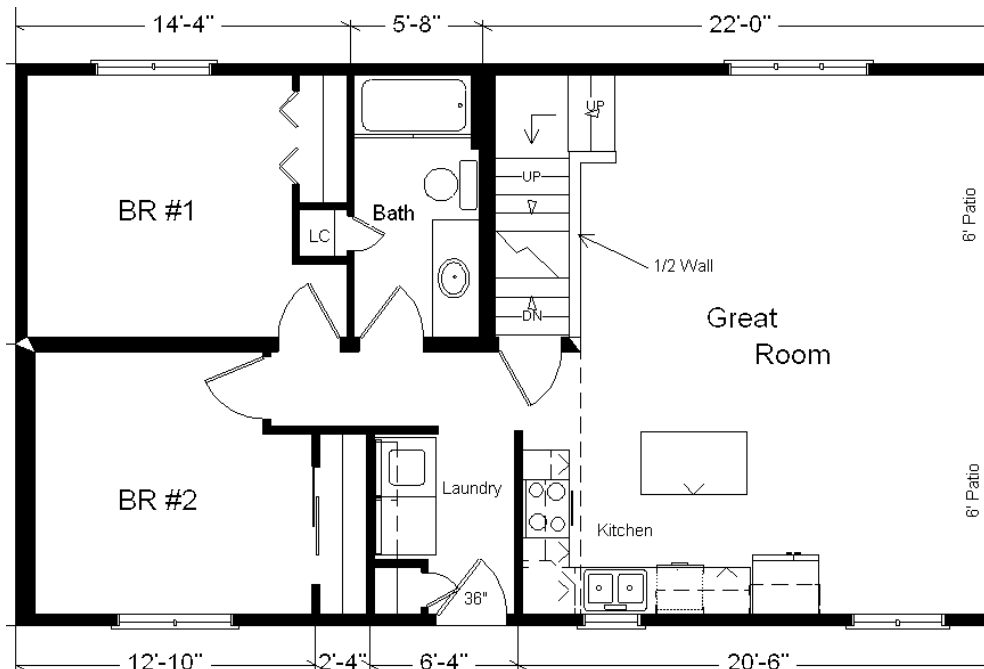
Base Price:	\$143,091.00
This Home Displays The Following Options:	
LP Smartside Siding (1502 sf)	6,759.00
3.5" Window Lineals	1,040.00
3.5" Door Lineals	360.00
Carpet Upgrade (Elegance)	1,788.00
2 DHI Paddle Fan Lights	367.00
Laundry Area w\ Hickory Cabinets	940.00
ORB Bath Option	495.00
Vanity Base Drawers (VDDB)	226.00
Cultured Granite Vanity Top	295.00
Recessed Medicine Cabinet	65.00
Swan Quartz Kitchen Sink	380.00
Pull-down Kohler Kit. Faucet (ORB)	235.00
Pioneer Hickory Cabinets (disc)	2,775.00
Select Cabinet Option	567.00
Crown Molding (22')	374.00
Custom Cabinets	276.00
Ceramic Tile Backsplash	350.00
Mullion Glass Cab. Door	134.00
Prefinished Oak Railing	595.00
2 - 6' Pella Trapezoid Windows	2,478.00
Pella Enc. Casement Windows(disc)	1,981.00
2 - 6' Pella Enc. Patio Doors	1,874.00
2nd Exterior Door Credit	-365.00

Total With Options Shown: \$167,080.00

Price Includes: Delivery up to 200 miles from PdC, WI, Crane Work, All Blueprints, R50 Ceilings, R21 Exterior Walls, Kohler Plumbing, Pella Windows, Knotty Pine Ceilings and End Walls, 200 Amp Service, All Applicable Tax and Much More!!



**Reverse Plan
 w/Optional
 Garage**



MN #BC146710

March 2021

Color Information

Chestnut LP Siding, Almond Trim, Tan Lineals, Weatherwood Shingles, Bisque Bath, #430 Vanity Top, Fawn Carpet, 91180 Vinyls, Nero Sink, Natural Oak Trim & Doors, Black Unvented Rangehood, Almond Pella Vinyl Casement Windows, Natural Pine Car Siding on Ceiling and End Walls, Butterum Granite Countertop, ORB Hardware/Bath