

# Model #5

28x66 4-sec Ranch 1,848 sq. ft.

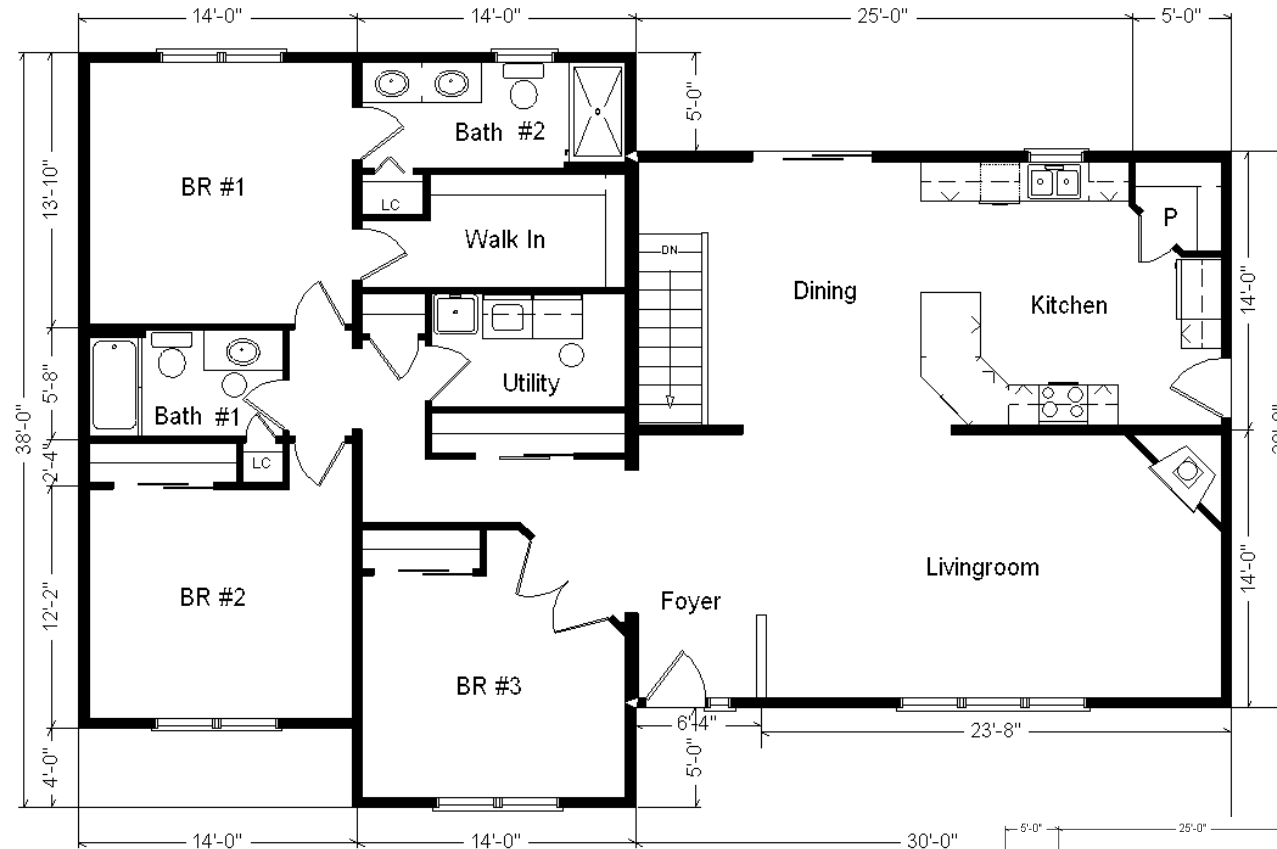
Drapes & appliances shown are optional and not included in Total price.

# Design Homes, Inc.

Prairie du Chien, WI  
 (#9423 -9-4)



<b>Base Price:</b>	<b>\$163,408.00</b>
<b>This Home Displays The Following Options:</b>	
6/12 Roof Slope	3,234.00
Peachtree Windows (disc.)	4,400.00
Upgrade Carpet (Gorham)	883.00
Gas Fireplace	5,900.00
Vaulted Ceilings (LR, DR, Kit)	1,806.00
Oak Rail & Spindles	850.00
Interior French Doors w/Glass	1,185.00
Paddle Fan Light (x3)	408.00
Floor Receptacle (By Railing DR)	139.00
Wire For Electric Range	100.00
Extra Outlets (x2)	36.00
Elongated Toilet	62.00
Laundry Area w/Cabinets	750.00
Laundry Tub	149.00
Cold Water Faucet	38.00
Extra 3/4 Bath	2,450.00
Recessed Medicine Cabinet (x2)	130.00
Double Sink Vanity	725.00
5' Shower	178.00
Westbury Oak Cabinets	2,858.00
APC Kitchen Cabinet Option	1,494.00
2' of Extra APC Base Cabinets	532.00
Custom Cabinets	396.00
Ceramic Tile Backsplash	350.00
Crown Molding (32')	544.00
36" Wide Counter Top (7')	56.00
Suntube (x2)	1,198.00
Painted Front Entry Door	147.00
Sidelight 1/2 Glass (S33)	805.00
6' Peachtree Patio Door (disc.)	1,391.00
<b>Total With Options Shown:</b>	<b>\$196,602.00</b>

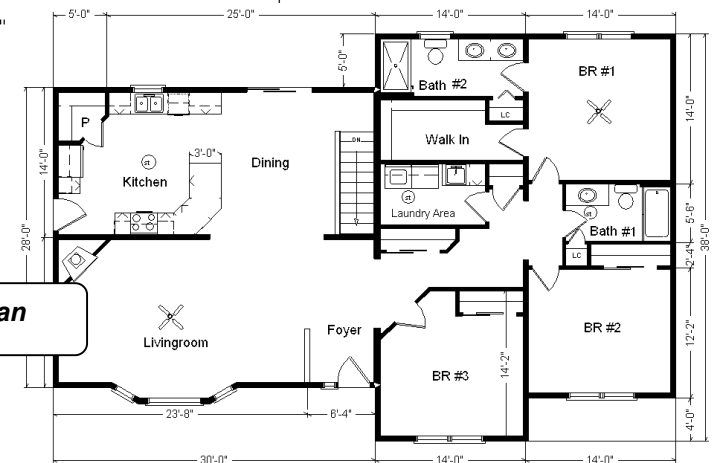


### Color Information

S. Wicker Siding, Clay Trim,  
 Heather Blend Shingles,  
 Wineberry Shutters,  
 White Baths, Clove Carpet, (?) Laminate Floor, 91082 Vinyls,  
 SS Sink, Natural Oak Trim & Doors, Black Appliances, Peachtree Pebble Tan Dbl-hung Windows,  
 Butterum Granite Countertop, Spring Valley Natural Cabinets, Black FP Front

**Price Includes: Delivery up to 200 miles from PdC, WI, Crane Work, All Blueprints, R55 Ceilings, R21 Exterior Walls, Kohler Plumbing, Pella Windows, 200 Amp Service, All Applicable Tax and Much More!!**

Reverse Plan



March 2021