

Model #4

28x44 Ranch 1,232 sq. ft.

Design Homes, Inc.

Prairie du Chien, WI

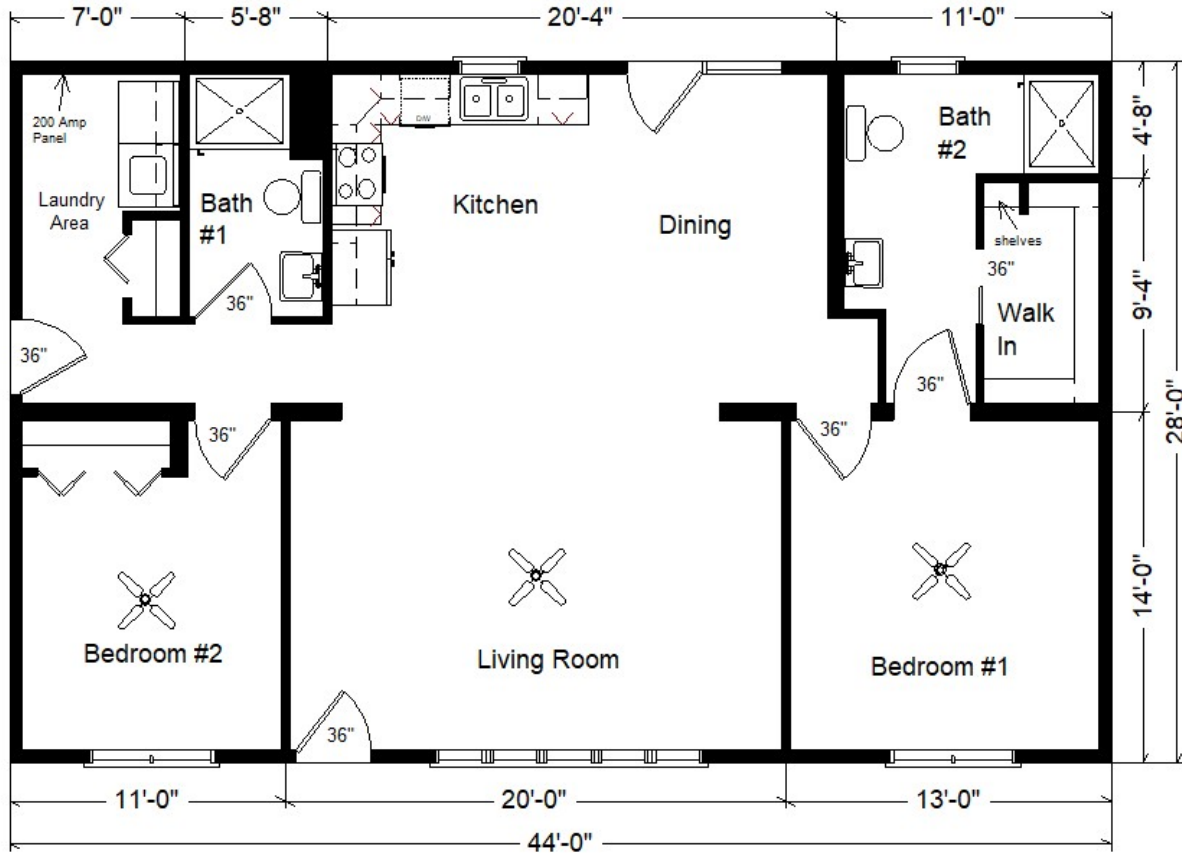
(#10935 - 0 6)



Base Price:	\$110,272.00
This Home Displays The Following Options:	
5/12 Roof Slope	1,848.00
Large Gable	1,995.00
Shutters (x5)	315.00
Pella 250 Series Casement Windows	1,984.00
Mohawk Revwood in BR's and LR	2,279.00
Vaulted Ceilings (Kit,DR,LR)	1,204.00
Landen Maple Autumn Cabinets	3,605.00
Select Cabinet Option (Kitchen)	567.00
Crown Molding (19')	323.00
Subway Tile Backsplash	350.00
Pull-down Kit. Faucet (K560-CP)	215.00
DHI Paddle Fan/Light (x3)	530.00
LED Exterior Soffit Lights (x2)	130.00
Wire for Electric Range	100.00
Extra 3/4 Bath	2,450.00
ADA Shower Upgrade OPS4836 (x2)	3,330.00
Handheld Adj. Shower Heads (x2)	240.00
Kohler Hi-rise Toilets (x2)	430.00
Recessed Medicine Cabs. (x2)	130.00
Laundry Area w/Cabinets	750.00
Brushed Nickel Baths	795.00
Pocket Door	204.00
Upgrade Front Door	400.00
Painted One Side (Both Doors)	294.00
6' Pella Fr. Swing Patio Door	3,612.00

Total With Options Shown: \$138,352.00

March 2021

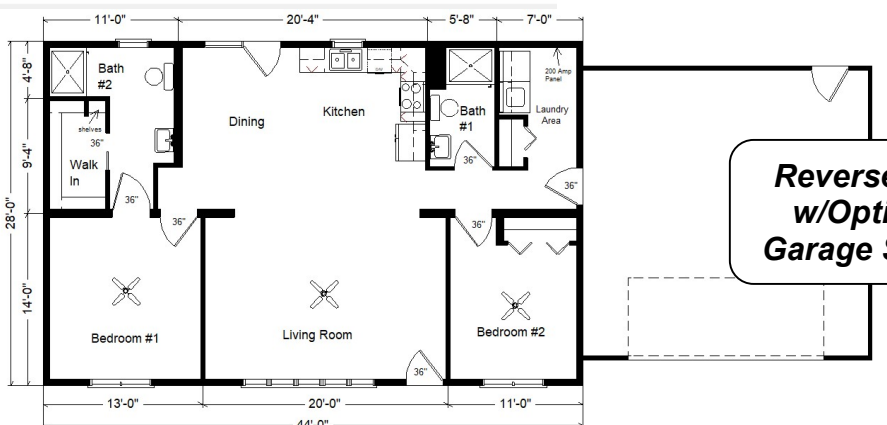


Color Information

Granite Grey Siding, White Trim, Moire Black Shingles, Black Shutters, White Baths, White Pro-Flo PF14104/PF101 Pedestal Sinks, CDL77-09W Outerbanks Revwood, LX270 Vinyls, SS Sink, Pecan Oak Trim & Doors, SS vented Rangehood, White Pella 250 Casement Windows, #3522-58 Perlato Granite Countertop

MN #BC146710

Price Includes: Delivery up to 200 miles from PdC, WI, Crane Work, All Blueprints, R55 Ceilings, R21 Exterior Walls, Kohler Plumbing, Pella Windows, 200 Amp Service, All Applicable Tax and Much More!!



Reverse Plan w/Optional Garage Shown