

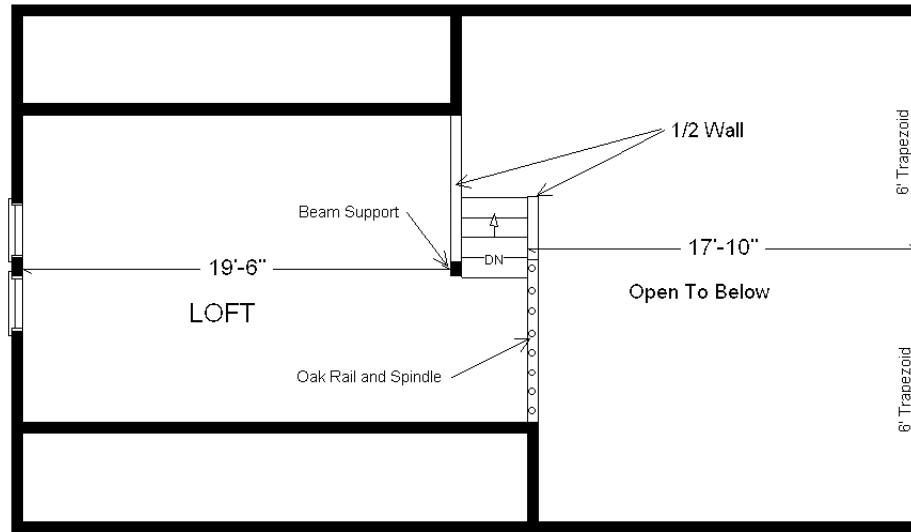
| | |
|--------------------------------------------------|---------------------|
| Base Price: | \$143,091.00 |
| This Home Displays The Following Options: | |
| LP Smartside Siding (1502 sf) | 6,759.00 |
| 3.5" Window/Door Lineals | 1,400.00 |
| Carpet Upgrade (Adaptation) | 718.00 |
| Laundry Area w/Cabinets | 750.00 |
| Vanity Base Top Drawer | 70.00 |
| Hi-definition Kit. Countertops | 263.00 |
| Swan Quartz Kitchen Sink | 380.00 |
| Pull-down Kohler Kit. Faucet (ORB) | 235.00 |
| Crown Molding (19') | 323.00 |
| Custom Cabinets | 364.00 |
| Mullion Glass Cab. Door | 134.00 |
| Ceramic Tile Backsplash | 350.00 |
| Recessed Medicine Cabinet | 65.00 |
| Prefinished Oak Railing | 595.00 |
| 6' Trapezoid Windows | 2,478.00 |
| Visions Windows (disc.) | 1,873.00 |
| 2 - 6' Visions Patio Doors (disc.) | 1,975.00 |
| Paint 1 Side of Front Door | 147.00 |
| 2nd Exterior Door Credit | -365.00 |

Total With Options Shown: \$161,605.00

**Model #14
Rustic Loft
1,260 sq. ft.**

Design Homes, Inc.

**Prairie du Chien, WI
(#10409-5-6)**

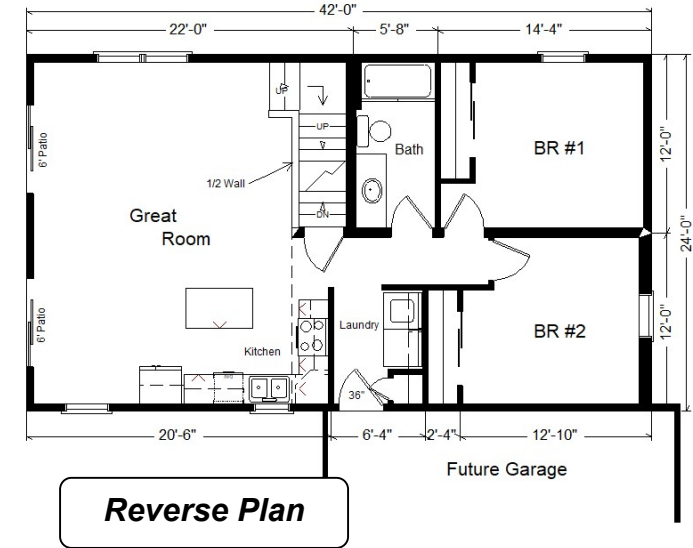
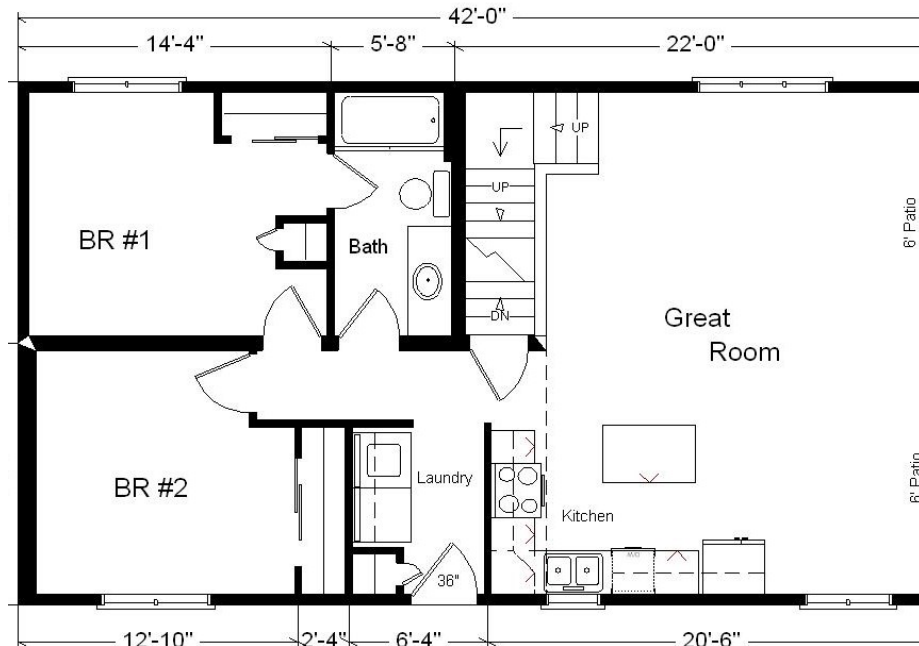


Color Information
Chestnut LP Siding, Almond Trim, Tan Lineals, Weatherwood Shingles, Bisque Bath, Jute Carpet, 91160 Vinyls, Nero Sink, Pecan Oak Trim & Doors, Black Unvented Rangehood, Tan Vision Casement Windows, Golden Pine Car Siding on Ceiling, Antique Mascarello Countertop, ORB Hardware/Chrome Baths

**This Display Home
Is Sold**

March 2021
MN #BC146710

Price Includes: Delivery up to 200 miles from PdC, WI, Crane Work, All Blueprints, R49 Ceilings, R21 Exterior Walls, Kohler Plumbing, Pella Windows, Knotty Pine Ceilings and End Walls, 200 Amp Service, All Applicable Tax and Much More!!



Reverse Plan