

Model #5
Rustic Loft
 1,260 sq. ft.

Design Homes, Inc.

Medford, MN
 (#10596-6-6)



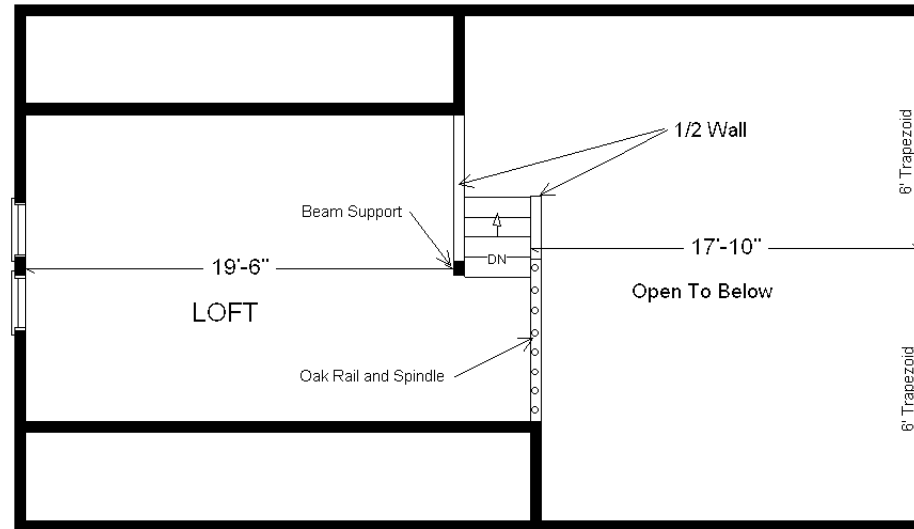
March 2021

MN #BC146710

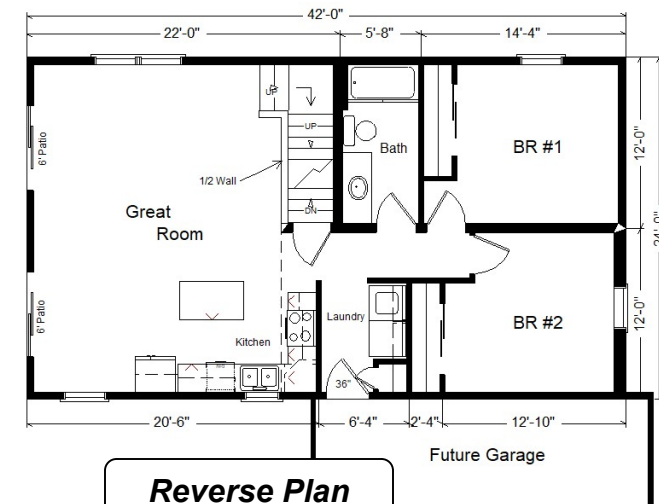
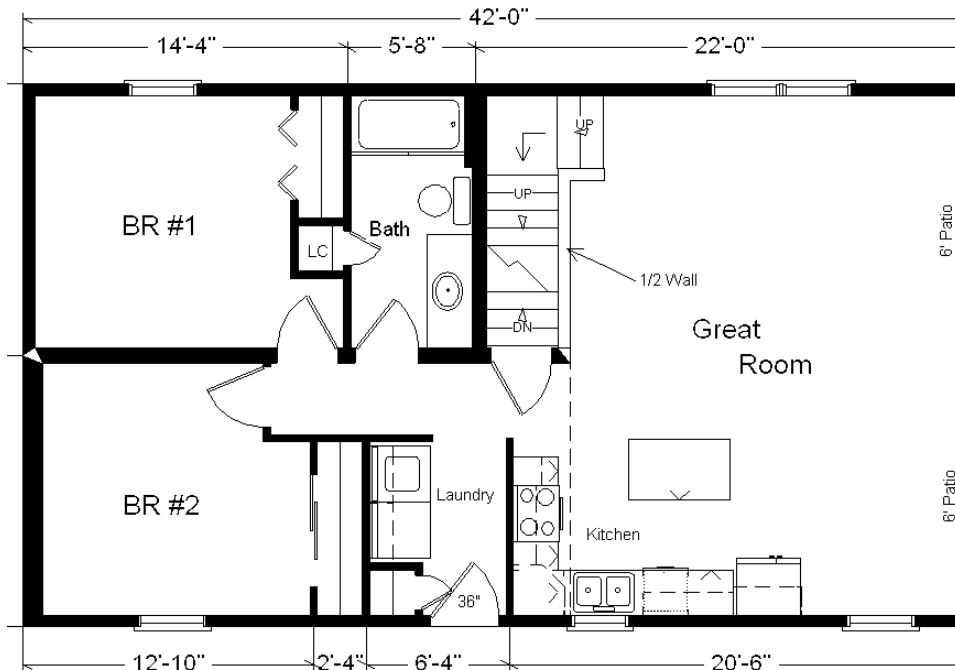
| | |
|--|---------------------|
| Base Price: | \$143,091.00 |
| This Home Displays The Following Options: | |
| LP Smartside Siding (1502 sf) | 6,759.00 |
| 3.5" Window & Door Lineals | 1,140.00 |
| Carpet Upgrade (E. Nice) | 1,687.00 |
| 2 DHI Paddle Fan Lights | 367.00 |
| Wire for Elec. Range | 100.00 |
| Laundry Area w/Cabinets | 750.00 |
| Vanity Base Drawers (VDDB) | 226.00 |
| Recessed Medicine Cabinet | 65.00 |
| Hi-definition Kit. Countertops | 263.00 |
| Crown Molding (19') | 289.00 |
| Ayden Rustic Birch Cabinets | 3,605.00 |
| APC Cabinet Option | 1,494.00 |
| Custom Cabinets | 364.00 |
| Ceramic Tile Backsplash | 350.00 |
| Mullion Glass Cab. Door | 134.00 |
| Prefinished Oak Railing | 490.00 |
| Visions DH Windows (disc.) | 618.00 |
| 6' Trapezoid Windows (x2) | 2,478.00 |
| Casement Windows in Loft | 171.00 |
| 2 - 6' Visions Patio Doors (disc.) | 1,784.00 |
| Paint 1 Side of Front Door | 147.00 |
| 2nd Exterior Door Credit | -365.00 |

Total With Options Shown: \$166,007.00

Price Includes: Delivery up to 200 miles from PdC, WI, Crane Work, All Blueprints, R50 Ceilings, R21 Exterior Walls, Kohler Plumbing, Pella Windows, Knotty Pine Ceilings and End Walls, 200 Amp Service, All Applicable Tax and Much More!!



Color Information
 Mahogany LP Siding, Almond Trim, Oyster Shell Lineals, Driftwood Shingles, Bisque Bath, Broom Straw Carpet, 91180 Vinyls, SS Sink, Pecan Oak Trim & Doors, Black Unvented Rangehood, Tan Visions Snglung & Casement Windows, Pecan Car Siding on Ceiling, Antique Mascarello Countertop, ORB Hardware/Chrome Baths



Reverse Plan