

Model #1

28x52 Ranch 1,456 sq. ft.

Design Homes, Inc.

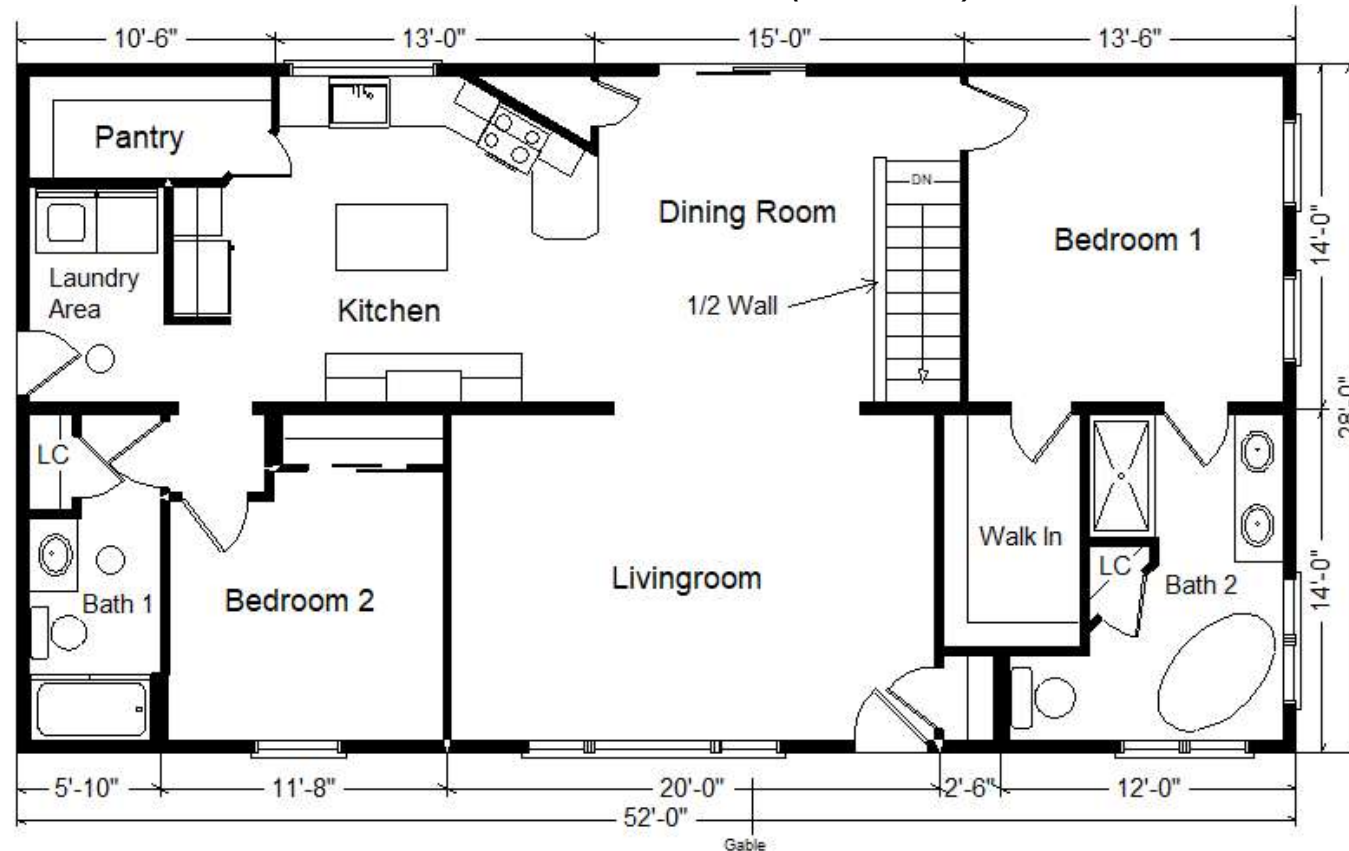
Medford, MN

(#11438-4-6)



MN #BC146710

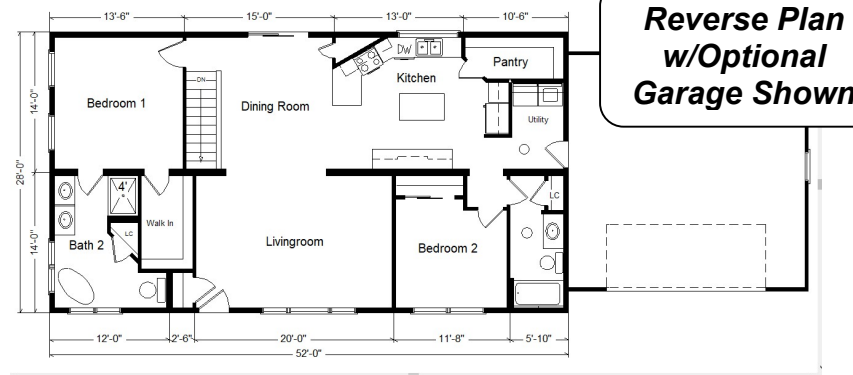
Prices are Subject
to Change



Color Information

Slate Vinyl Siding,
Almond Trim, Sav.
Wicker Lineals, Black
Shingles, Trellis
Cabinets, Pecan Oak
Trim & Doors, White
Baths, #1250 Vanity
Tops, Truffle Carpet,
CDL74 Cedar Chestnut
Flooring, #799 Gothic
Arch in Baths, Fossil
Pella 250 Dbl-hung
Windows, Bavaria
Quartz Kitchen
Countertops (no BS)

March4 2025



Reverse Plan
w/Optional
Garage Shown

MN #BC146710

Price Includes: Crane Setting,
All Blueprints, R55 Ceilings, R21
Exterior Walls, Kohler Plumbing,
Pella Windows, 200 Amp
Service, All Applicable Tax and
Much More!!

*See Sales Rep For Any
Applicable Delivery Fees

Base Price:	\$156,224.00
This Home Displays The Following Options:	
6/12 Roof Slope	2,548.00
9' Ceilings	2,883.00
Large Gable	1,995.00
Extra Roof Detail	225.00
Premium Color Vinyl Siding	929.00
Upgrade Carpets	1,400.00
RV Rewood Upgrade Flooring	442.00
Window and Door Lineals	1,546.00
Mohawk Solid-Tech Floor (Bathrooms)	402.00
Laundry Area w/Dover Cabinets	1,180.00
Wire for Electric Range	175.00
Wire for Future Microwave	75.00
Vent Rangehood/Microwave to Exterior	200.00
Wire for Future DW	75.00
Extra 3/4 Bath	2,450.00
Double Sink Vanity	725.00
Stand Alone Tub/Matte Black Faucet	4,694.00
5' Utile 6032 Shower (Bath#2)	1,850.00
Black HD Shower Doors (Bath #2)	1,250.00
Vanity Drawer Bases	490.00
Elongated Toilet (x2)	124.00
Cultured Granite Vanity Tops	661.00
Matte Black Bath Package	935.00
Quartz Kitchen Countertops	8,071.00
SS Apron Sink (EL-84)	825.00
Pulldown Kitchen Faucet (K22033CP)	410.00
Dover Oak Cabinets	4,840.00
Custom Cabinets	488.00
5' of Extra Base Cabinets	1,930.00
5' of Mullion Glass Cab. Doors	520.00
Crown Molding (28')	560.00
LED Lighting (x5)	325.00
Suntubes (x2)	1,590.00
Kitchen Picture Window	721.00
Upgrade Front Door (SS866)	1,903.00
Pella 250 Dbl-hung Vinyl Windows	1,731.00
Master Bath Windows w/Safety Glass	4,319.00
6' Pella 250 Patio Door	2,896.00

Total With Options Shown: \$214,607.00