

Model #5

28x76 4-Sec Ranch

2,128 sq. ft.

* ALL 4-Section Ranch Sales Are Subject To Approval

Design Homes, Inc.

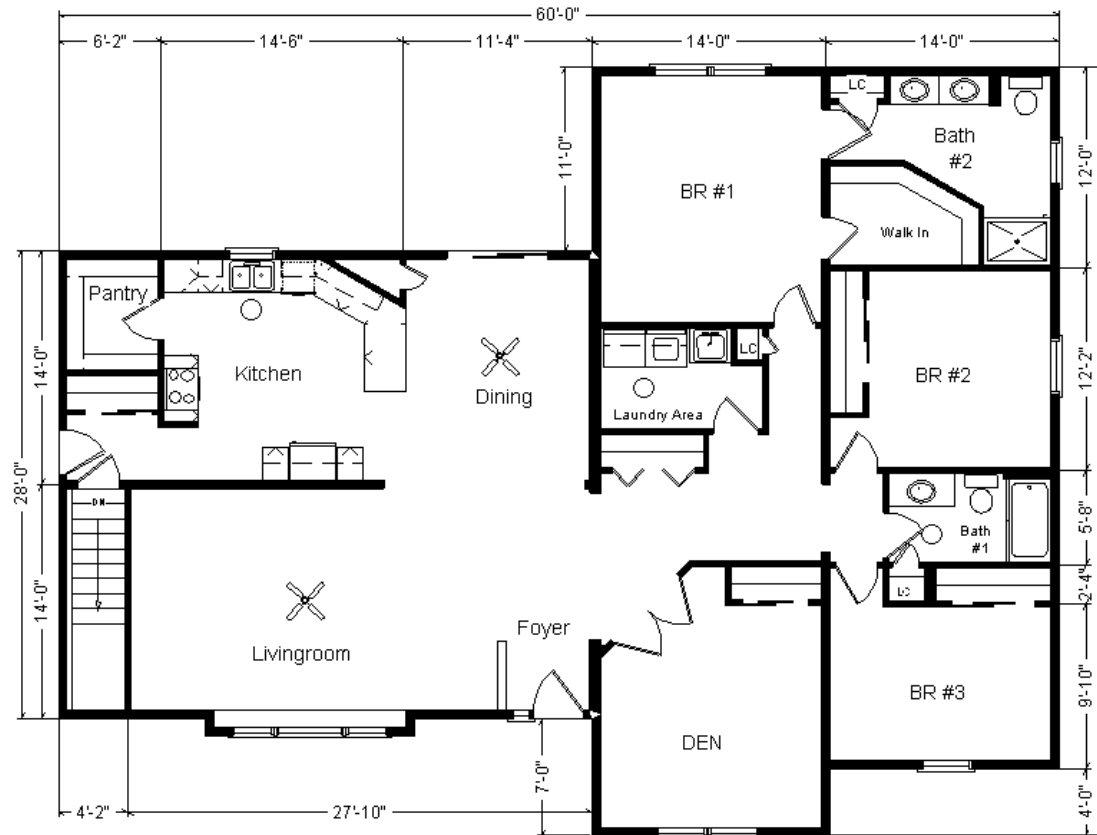
Fond du Lac, WI

(#10445 -5-4)



Display Home is Sold

Prices are Subject to Change



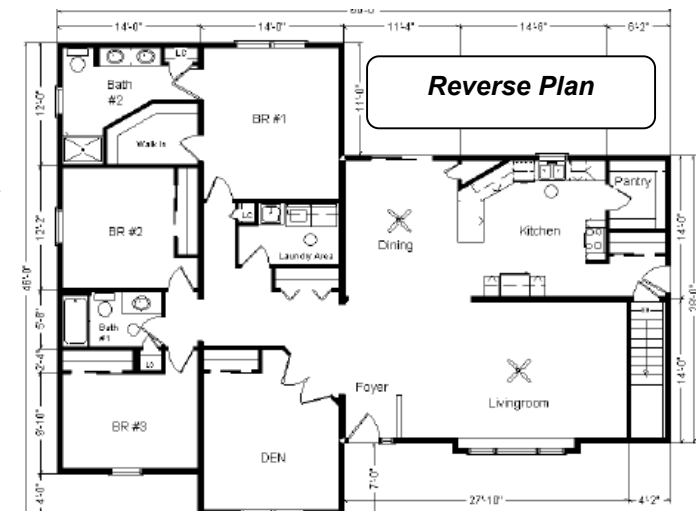
Feb. 2024

Color Information
 Spruce Dbl 4" Siding, White Trim, Weathered Wood Shingles, White Lineals, White Window Grilles, Bisque Baths, #430 Vanity Bath #2, Aged Leather Carpet, 9510 Vinyls, Java Bean Oak Trim & Doors, Pella Impervia White Dbl-hung Windows, SS Sink and Microwave, Mocha Travertine Countertop

MN #BC146710

Price Includes: Crane Setting, All Blueprints, R55 Ceilings, R21 Exterior Walls, Kohler Plumbing, Pella Windows, 200 Amp Service, All Applicable Tax and Much More!!

*See Sales Rep For Any Applicable Delivery Fees



Base Price:	\$225,644.00
This Home Displays The Following Options:	
6/12 Roof Slope	3,724.00
Medium Gable	1,456.00
Premium Color Vinyl Siding	1,130.00
Window Lineals	1,012.00
Upgrade Carpet (Adaptation)	1,697.00
Vaulted Ceilings (Lr, Kit, Dining)	1,625.00
Interior French Doors w/Glass	1,550.00
Wire for Electric Range	175.00
Paddle Fan/Light (x2)	398.00
Laundry Area w/Benton Birch Cabs.	985.00
SS Laundry Sink/Faucet/Base Cab.	813.00
Extra 3/4 Bath	2,450.00
Double Sink Vanity	725.00
Nutone Medicine Cabinets (disc.)	639.00
Shower Door (Bath #2)	575.00
Vanity Base Drawers (x3)	490.00
Hi-Rise Toilet (Bath #2)	215.00
Elongated Toilet (Bath #1)	62.00
Cult. Granite Vanity Top (Bath #2)	441.00
Benton Birch UMBER Cabinets	3,430.00
5 Pc. Drawer Fronts (Kit. Only)	509.00
SS Microwave (WMH310)	464.00
Base Waste Basket	265.00
Base Cabinet Drawer Base (x2)	92.00
Mullion Glass Cabinet Door	156.00
3' of Extra Wall Cabinets	504.00
2' of Extra Base Cabinets	358.00
Ceramic Tile Backsplash	595.00
Crown Molding Above Kit Cabinets (28')	560.00
Kohler Pull-down Kit. Faucet (K560-CP)	255.00
Glass Walk-in Pantry Door	869.00
Suntubes (x3)	2,385.00
1' Bump-out LR Window	859.00
Pella Impervia Windows (Fiberglass)	7,334.00
6' Pella Impervia Patio Door	3,424.00
Window Grilles (Front only)	558.00
Sidelight (S692TRC)	1,343.00
Upgrade Entry Door (S684TRC)	730.00

Total With Options Shown: \$270,496.00