

Model #3

28x54 Ranch 1,530 sq. ft.

Design Homes, Inc.

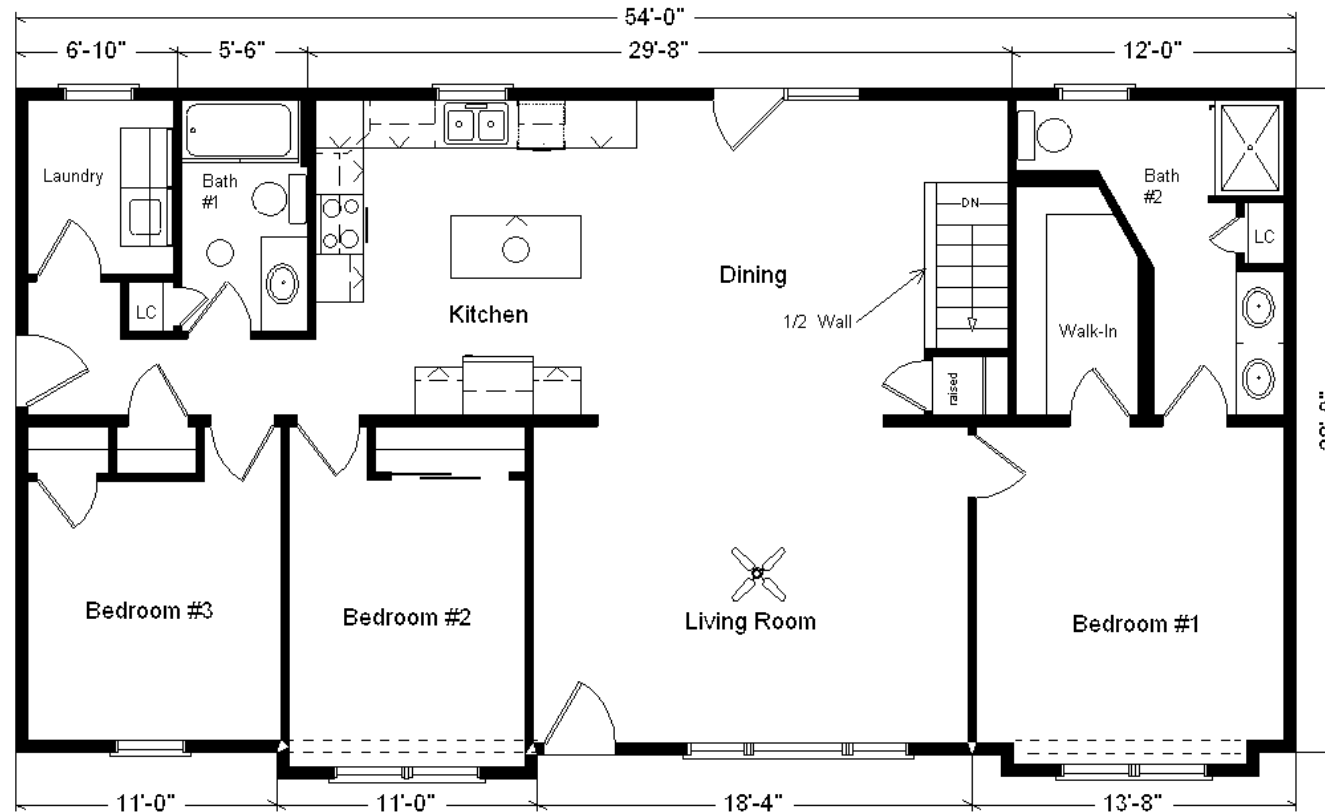
Fond du Lac, WI

(#10424-5-4)



Base Price:	\$127,280.00
This Home Displays The Following Options:	
6/12 Roof Slope	2,646.00
Double Gable	2,358.00
Medium Gable	1,456.00
2-1' Bump-out Rooms	1,718.00
LP Smartside Siding	6,818.00
Window Lineals	715.00
Vaulted Ceilings (LR, Din & Kit.)	1,444.00
Upgrade Carpets (Southwind)	1,183.00
Paddle Fan Light (LR)	204.00
Laundry Area w/shelf	428.00
Extra 3/4 Bath	2,450.00
Double Sink Vanity	725.00
Cultured Granite Vanity Top (Bath #2)	354.00
Shower Door (Bath#2)	285.00
Vanity Drawer Bases (x3)	334.00
Recessed Medicine Cabinets (x2)	130.00
Dryden Rustic Birch Cabinets (disc.)	4,020.00
6' of Extra Wall Cabinets	1,056.00
7' of Extra Base Cabinets	1,575.00
2-24" Drawer Bases	92.00
Custom Cabinets	640.00
Crown Molding (39')	624.00
Mullion Glass Door	128.00
Hi Macs Kitchen Countertop	5,397.00
Kohler Pull-down Kit. Faucet (BRZ)	235.00
Ceramic Tile Backsplash	350.00
Upgrade Front Door (S684TRC)	516.00
2 Suntubes	1,198.00
Pella Proline Windows	4,989.00
6' Proline Fr. Swing Patio Door	3,612.00

Total With Options Shown: \$174,960.00



April 2021

Color Information
 LP Smokey Ash Siding,
 White Trim, Driftwood
 Shingles, White Window
 Lineals, Acrylic White
 Sink, No Shutters,
 Saddle Oak Trim, Doors,
 Windows and Cabinets,
 Bisque Baths, Parchment
 Vanity Top Bath #1, #430
 Beige C. Granite Vanity
 Top Bath #2, Mascot
 Carpet, 91180 Vinyl,
 ORB Hardware, White
 Pella Dbl-hung Windows,
 SS Rangehood, #G42
 Venetian Sand
 Countertop

MN #BC146710

Price Includes: Delivery up to 200 miles from PdC, WI, Crane Work, All Blueprints, R55 Ceilings, R21 Exterior Walls, Kohler Plumbing, Pella Windows, 200 Amp Service, All Applicable Tax and Much More!!

This Model is Sold!