

Base Price:	\$185,187.00
This Home Displays The Following Options:	
6/12 Roof Slope	3,724.00
Medium Gable	1,456.00
WeatherShield Windows (disc.)	4,991.00
LP Smartside	8,235.00
LP Shake Siding on Front Gables	611.00
Window / Door Lineals	1,308.00
Upgrade Carpet (Southwind)	1,775.00
Electric Fireplace	3,100.00
9' Ceilings	4,065.00
6 Panel Oak Doors (x9)	1,935.00
Interior French Doors w/Glass	1,185.00
Recessed Lights (5) and Dimmer Switch	263.00
Wire for Electric Range	100.00
Laundry Area w/Cabinets	750.00
SS Laundry Sink/Faucet/Base Cabs.	714.00
Hi-Definition Kit./Laundry Countertops	465.00
Brush Nickel Package	1,165.00
Extra 3/4 Bath	2,450.00
Double Sink Vanity	725.00
Corner Whirlpool Tub	3,200.00
Shower Door (x2)	570.00
Vanity Base Drawers (x3)	334.00
Recessed Medicine Cabinet (x2)	130.00
Kohler Hi-Rise Toilets (x2)	430.00
Cult. Granite Vanity Tops	561.00
Seneca Ridge Oak Cabinets (disc.)	2,400.00
Classic Deluxe Drawers\Plywood Ends	550.00
Custom Cabinets	362.00
2' of Extra Wall Cabinets	246.00
7' of Extra Base Cabinets	1,127.00
Ceramic Tile Backsplash	350.00
Crown Molding Above Kit Cabinets (32')	544.00
Kohler Pull-out Kit. Faucet (K15160-BN)	195.00
WP Microwave (WMH31017)	364.00
WP Dishwasher (WDF310)	574.00
Suntubes (x3)	1,797.00
Walk-Out Bay	4,925.00
R24 High Density Batt Insulated ext. Wall	1,265.00
6' Wshield Patio Door (disc.)	2,362.00
Sidelight (SS692HRRN)	1,209.00
Upgrade Entry Door (SS684HRRN)	860.00

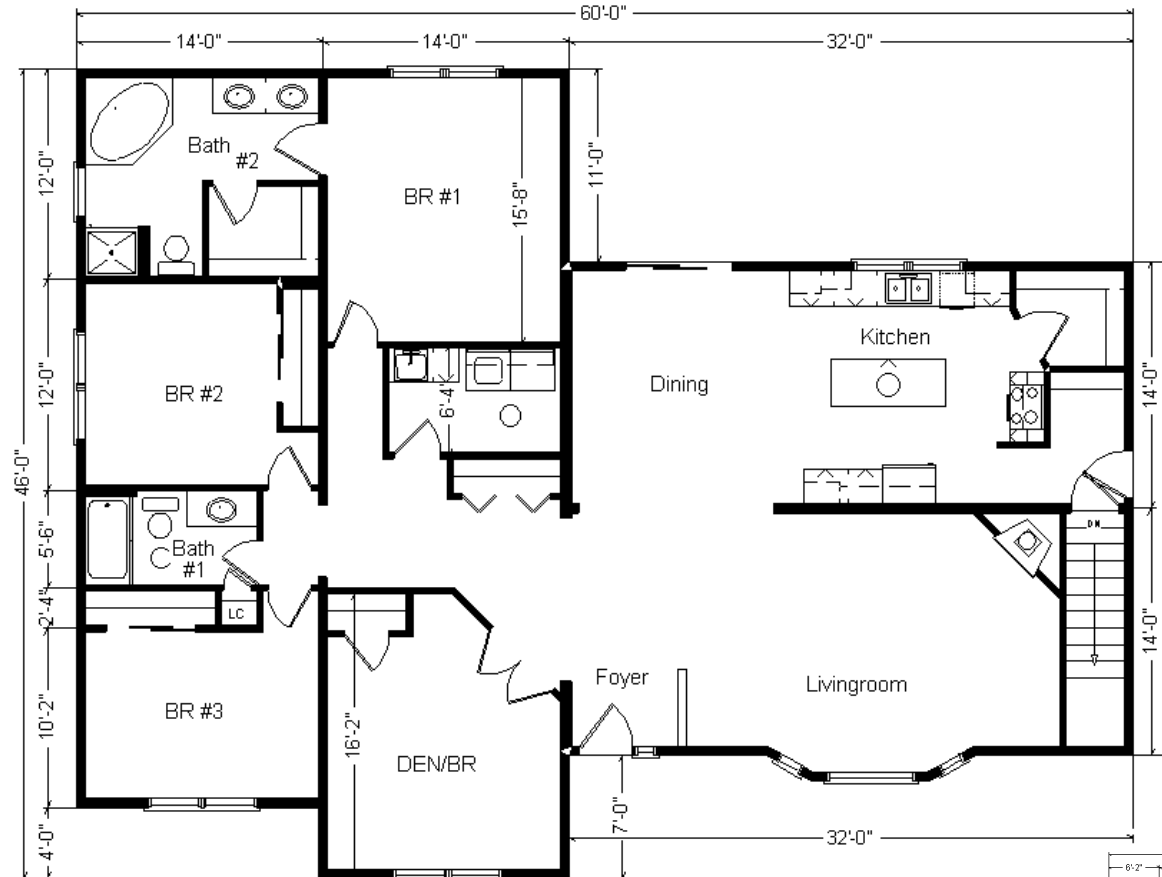
Total With Options Shown: \$248,559.00

Model #6

28x76 4 Sec. Ranch
2,128 sq. ft.

Design Homes, Inc.

Eldridge, IA
(#10264 -4-4)



April 2021

Color Information
Smokey Ash Siding, Sm. Ash Shake Accents in Gables, White Trim, Driftwood Shingles, White Lineals, White Baths, #430 Vanities, Mascot Carpet, 9511 Vinyls, SS Sink, Nutmeg Oak Trim & Doors, Black Appliances, White Dbl-hung Windows w/Nutmeg Interiors, Golden Mascarello Countertop, Provincial Front Door, Black FP Front

Buy Display Model For: \$228,674.00!
(Discounted 19,885 !)

Price Includes: Delivery of display home up to 100 miles, Crane Work, All Blueprints, R55 Ceilings, R21 Exterior Walls, Kohler Plumbing, Pella Windows, 200 Amp Service, All Applicable Tax and Much More!!

Reverse Plan

