

<b>Base Price:</b>	<b>\$150,941.00</b>
<b>This Home Displays The Following Options:</b>	
6/12 Roof Slope	2,548.00
9' Ceilings	2,883.00
Large Gable	1,995.00
Medium Gable	1,456.00
2 - 1' Bump-out Rooms	1,718.00
Premium Color Vinyl Siding	840.00
Northwoods Shake Siding on Bump-outs	1,352.00
Window/Door Lineals	1,556.00
Pella Enc. Dbl-hung Windows (disc.)	696.00
Pella 6' Enc. Patio Door (disc)	1,841.00
Carpet Upgrade (Fawn)	2,044.00
Laminate Wood Floor (Kit, Din, F)	1,309.00
3 Panel Oak Doors (x13)	3,315.00
Premium Trim Package	4,628.00
Recessed Ceiling (LR)	706.00
Paddle Fan Light (x3)	530.00
Recessed LED Lights (x17)	1,105.00
2 Dimmer Switches	78.00
Wire for Electric Range	175.00
Laundry Area w/Upgrade Cabinets	960.00
SS Laundry Sink/Faucet	438.00
7' of Base Cabinets in Laundry	1,504.00
Extra 3/4 Bath	2,450.00
5' Shower Upgrade	250.00
Dbl. Vanity Sink (Bath #2)	725.00
Vanity Drawer Bases (x3)	396.00
Recessed Medicine Cabinets (x2)	130.00
Brushed Nickel Bath Package	920.00
Benton Birch Cabinets	3,430.00
36" Utility Cabinet/Pantry	1,116.00
APC Cabinet Option	1,793.00
Custom Cabinets	418.00
Pulldown Kohler Faucet	295.00
Ceramic Tile Backsplash	595.00
Crown Molding (31')	620.00
Mullion Glass Doors	358.00
SS Microwave (31017) w\Ext. Venting	664.00
Suntube (x2)	1,590.00
Painted Exterior Doors (1 Side)	458.00

**Total With Options Shown: \$200,826.00**

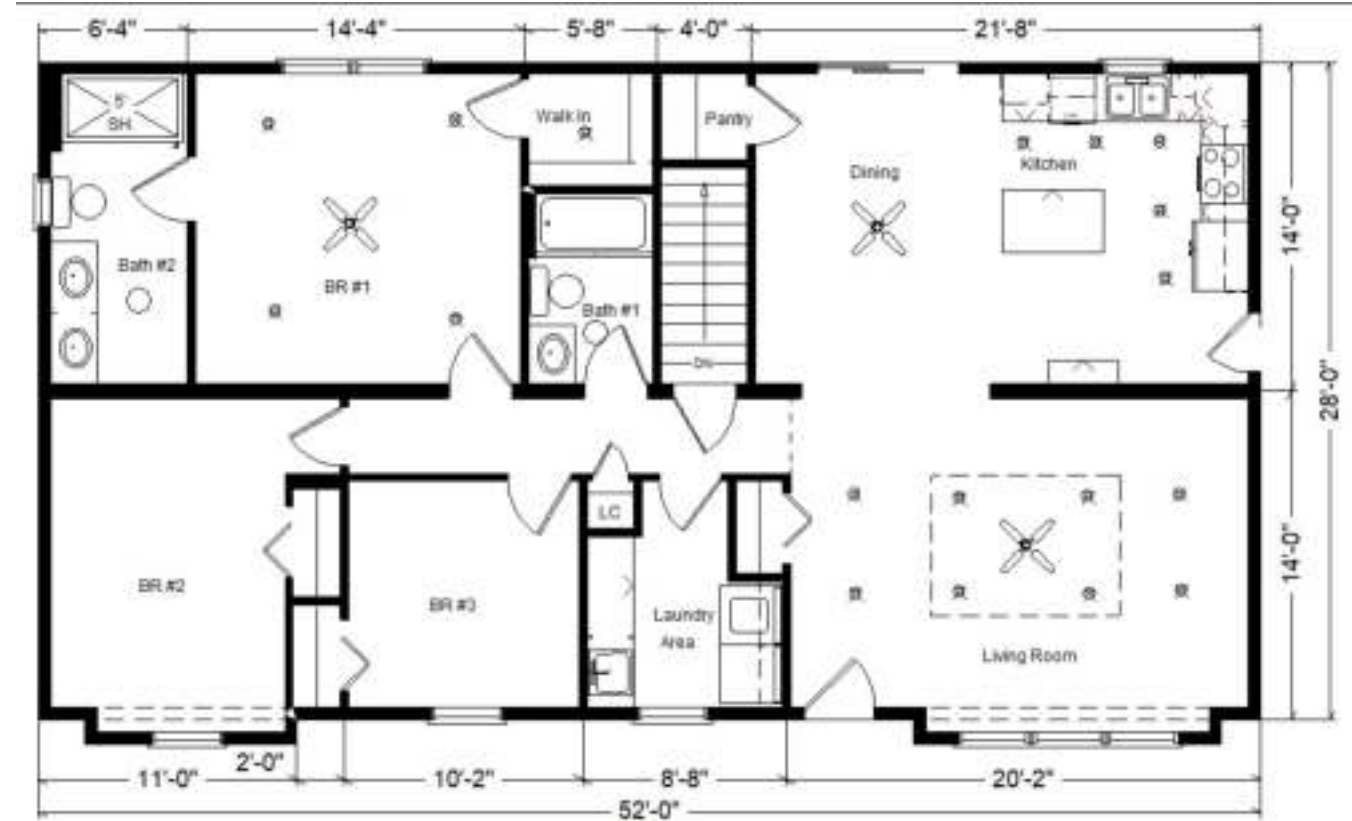
**Model #2**  
**28x52 Ranch 1,476 sq. ft.**

*Design Homes, Inc.*

**Eldridge, IA**  
**(#10825 -8- 6)**



Feb. 2024



**Color Information**  
*Hearthstone Vinyl Siding, White Trim, Weatherwood Shingles, White Lineals, Clay Shake on Bump-outs, SS Sink, Java Bean Oak Trim & Doors, Umber Cabinetry, White Baths, #150 Vanity Tops, Fawn Carpet, #48 LVP Floors, Knotted Chestnut Laminate Floors, White Pella Encomass Dbl-hung Windows, 9476-58 White Ice Countertop*

MN #BC146710

Prices are Subject to Change

**MODEL FOR SALE!**  
**\$178,735.00**  
 (22,091.00 Discount!)



**Reverse Plan w/Optional Garage**

**Price Includes: Crane Setting, All Blueprints, R55 Ceilings, R21 Exterior Walls, Kohler Plumbing, Pella Windows, 200 Amp Service, All Applicable Tax and Much More!!**  
 \*See Sales Rep For Any Applicable Delivery Fees