

**Base Price: \$123,877.00**

**This Home Displays The Following Options:**

6/12 Roof Slope	2,548.00
9' Ceilings	2,781.00
Large Gable	1,995.00
Medium Gable	1,456.00
2 - 1' Bump-out Rooms	1,718.00
Premium Color Vinyl Siding	701.00
Window Lineals (x10)	690.00
Pella Lifestyle Windows	3,324.00
Pella 6' Patio Door	2,925.00
2' Octagon Window (Bath #2)	622.00
Window Grilles (x9)	612.00
Carpet Upgrade (Everything Nice)	1,275.00
Hardwood Floor (Kit, Din, BR1)	4,455.00
3 Panel Oak Doors (x13)	2,782.00
Recessed Ceiling w/Crown Mould(LR)	874.00
Paddle Fan Light (x3)	530.00
Recessed LED Lights (x17)	1,105.00
2 Dimmer Switches	50.00
Laundry Area w/Upgrade Cabinets	1,410.00
SS Laundry Sink/Faucet	326.00
7' of Base Cabinets in Laundry	1,904.00
Extra 3/4 Bath	2,450.00
5' Shower Upgrade	178.00
Dbl. Vanity Sink (Bath #2)	725.00
Recessed Medicine Cabinet (x2)	130.00
Cultured Granite Vanity Tops	502.00
Vanity Drawer Bases (x3)	396.00
Brushed Nickel Bath Package	920.00
Wentworth Maple Cabinets	5,768.00
36" Utility Cabinet/Pantry	1,492.00
APC Cabinet Option	1,494.00
Custom Cabinets	296.00
Quartz Kitchen Countertops	4,226.00
Roundover Edge on Quartz Tops	560.00
Pulldown Kohler Faucet	235.00
Ceramic Tile Backsplash	350.00
Crown Molding (25')	425.00
Mullion Glass Doors	298.00
SS Appliance Package w/Gas Range	3,265.00
Suntube (x2)	1,198.00
Upgrade Front Door (Regency)	1,456.00
Painted Exterior Doors (1 Side)	294.00

**Total With Options Shown: \$184,618.00**

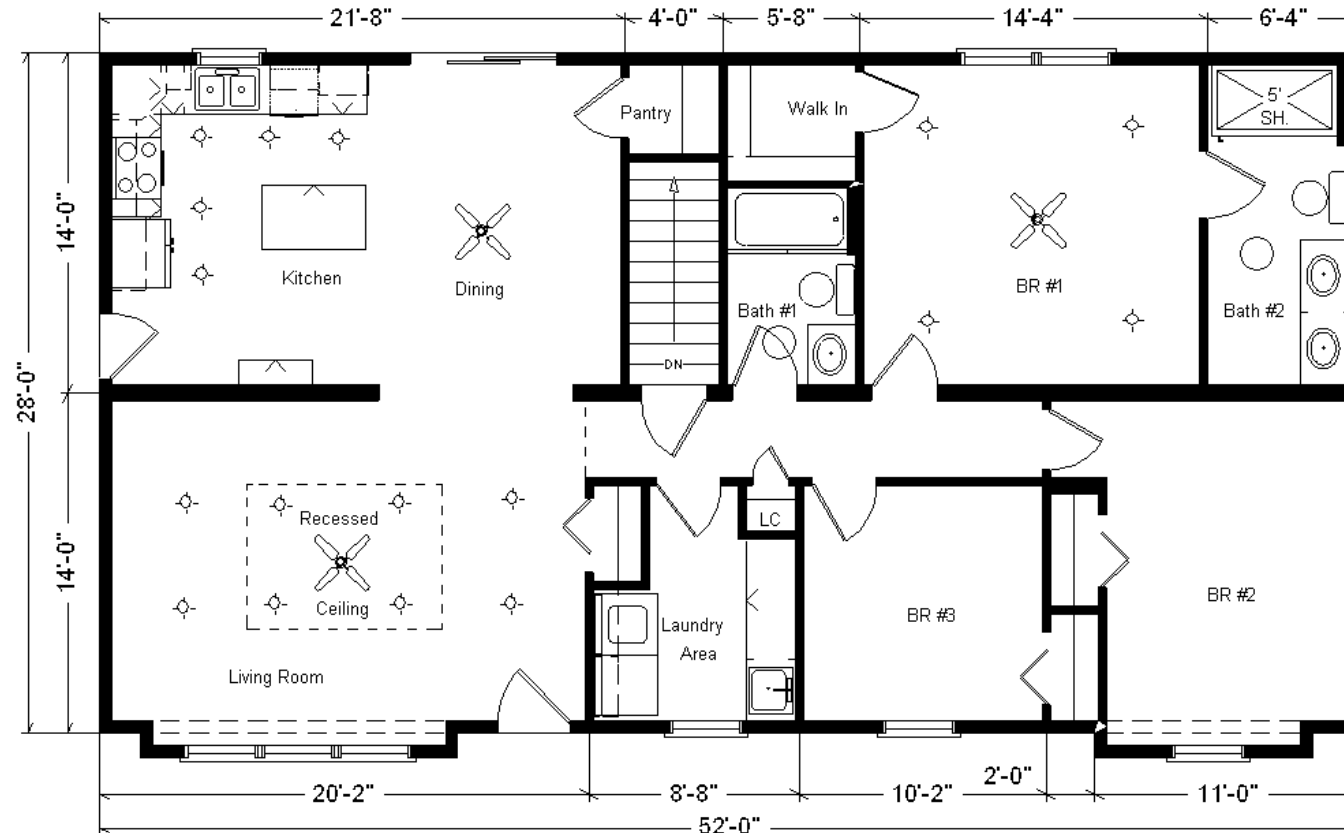
*Design Homes, Inc.*



**Model #5**  
**28x52 Ranch 1,476 sq. ft.**

**Edgerton, WI**  
**(#10525 -6- 6)**

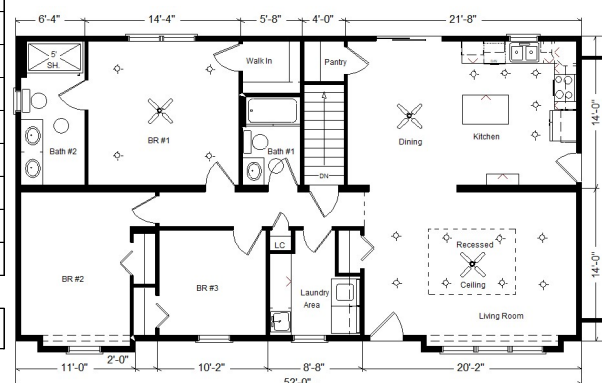
March 2021



**Color Information**

*Autumn Red Vinyl Siding, Clay Trim, Clay Corners, Heather Blend Shingles, Clay Window Lineals, SS Sink, Saddle Oak Trim & Doors, Pump. Glaze Cabinetry, Toasted Antique Island, Bisque Baths, #431 Vanity Tops, Bamboo Carpet, 91181 Vinyl Floors, Fall Canyon Wood Floors, Putty Pella Dbl-hung Windows w/Saddle Stain Interiors, SS Appliances, Rolling Stone Quartz Countertop w/ Bourbon Quartz Top on Island*

MN #BC146710



**Reverse Plan w/Optional Garage**

**Buy Display Model For:**  
**\$162,821.00!**  
**(Discounted 21,797 !)**

**Price Includes: Delivery up to 100 miles, Crane Work, All Blueprints, R55 Ceilings, R21 Exterior Walls, Kohler Plumbing, Pella Windows, 200 Amp Service, All Applicable Tax and Much More!!**