

Model #3

28x48 Prow Ranch 1,288 sq. ft.

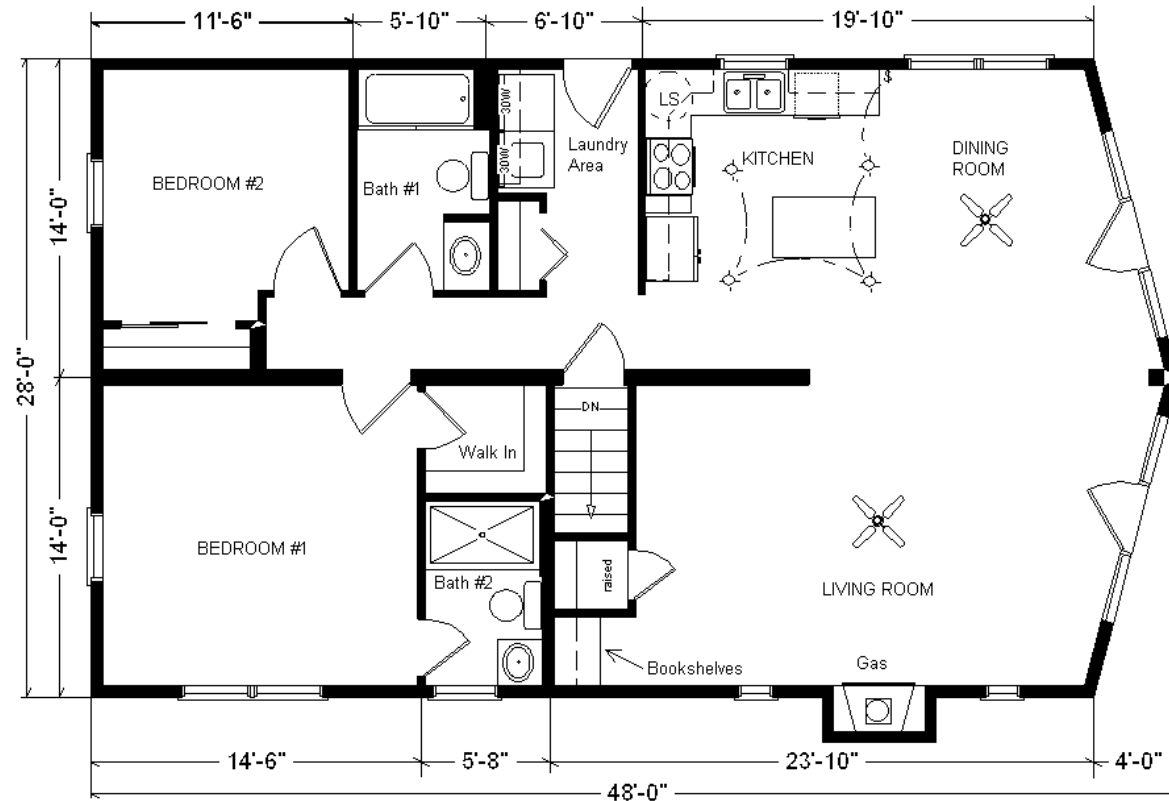
Design Homes, Inc.

Edgerton, WI
 (#10492 -6-6)



Base Price:	\$117,075.00
This Home Displays The Following Options:	
Steel Roof	4,560.00
Outside Chimney Chase	1,350.00
Gas Fireplace	5,900.00
Vaulted Great Room w/Par. Truss	1,883.00
LP Siding w/Diamond Coat Finish	4,976.00
Window and Door Lineals	722.00
Upgrade Carpet (E. Nice)	1,138.00
Pioneer Hickory Bookshelves (LR)	721.00
Wire for Electric Range	100.00
Ceiling Fan w/Lights (x2)	367.00
4 LED Can Lights on Dimmer (Kit)	285.00
Extra 3/4 Bath	2,450.00
Rubbed Bronze Bath Package	795.00
5' Shower Upgrade (Bath #2)	178.00
Shower Doors (Both Baths)	570.00
Vanity Drawer Base (Both Baths)	264.00
Cult. Granite Vanity Top (Bath #2)	118.00
Recessed Medicine Cabinet (x2)	130.00
Kohler Hi-rise Toilet (Bath #1)	215.00
Grab Bars (x2 Bath #1)	194.00
Laundry Area w/Hickory Cabinets	940.00
Pioneer Hickory Cabinets (disc.)	2,775.00
Ceramic Tile Backsplash	350.00
Crown Molding (19')	323.00
Hi Definition Kit. Countertops	255.00
Swan Quartz Sink (Nero)	380.00
Kohler Pull-down Kit. Faucet	235.00
Pella Lifestyle Windows	3,944.00
9' Trapezoid Windows (x2)	4,928.00
9 Hinged Pella Patio Doors (x2)	10,578.00
Exterior Door Credit	-365.00

Total With Options Shown: \$168,334.00



March 2021

Price Includes: Delivery up to 200 miles from PdC, WI, Crane Work, All Blueprints, R55 Ceilings, R21 Exterior Walls, Kohler Plumbing, Pella Windows, 200 Amp Service, All Applicable Tax and Much More!!

Drapes & appliances shown are optional and not included in Total price.

MN #BC146710

Color Information
 LP Seal Siding, Almond Trim, Oyster Lineals, Light Stone Metal Roof., Sand Carpet, Bisque Baths, #430 & #259 Vanity Tops, Black Appliances, Antique Mascarello Countertop, Sand Carpets, 91160 Vinyl Flooring, Pella ProLine Windows w/Golden Oak Interiors, Caledonia FP Facade, Pioneer Hickory Natural Cabinets, Rubbed Bronze Package

Reverse Plan w/Optional Garage

