

Model #8
Rustic Loft
 1,260 sq. ft.

Design Homes, Inc.

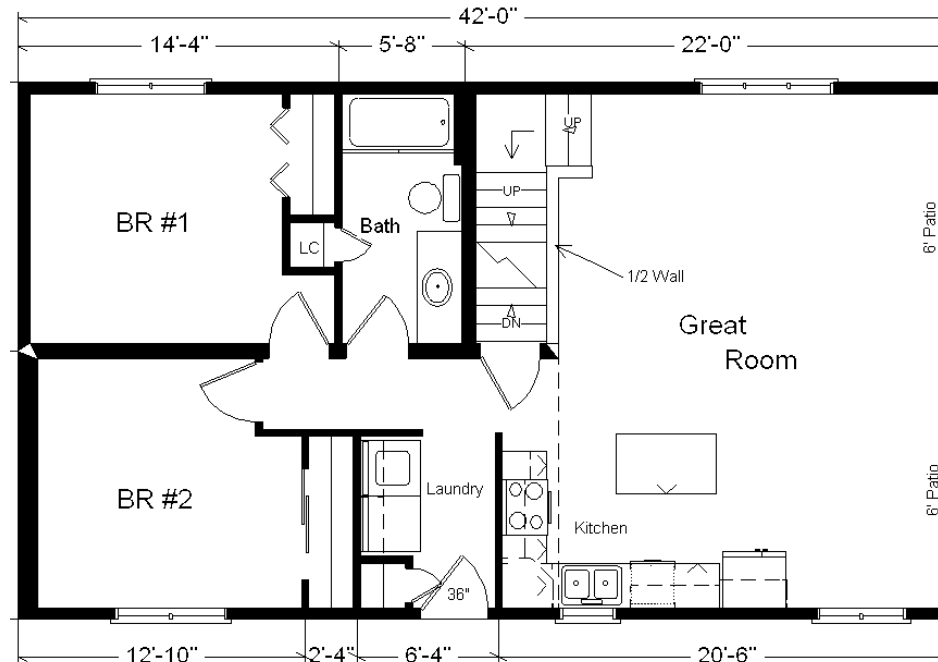
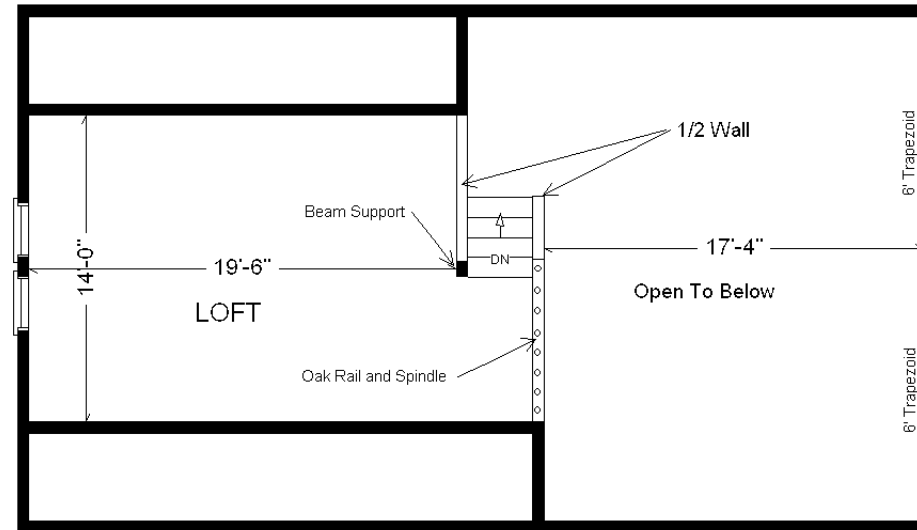
Chippewa Falls, WI
 (#10549-6-6)



Base Price:	\$143,091.00
This Home Displays The Following Options:	
LP Smartside Siding (1502 sf)	5,633.00
3.5" Window & Door Lineals	1,400.00
Metal Roofing	5,420.00
Carpet Upgrade (E. Nice)	1,713.00
Laminate Wood Floor (Kit, Din, Hall)	1,131.00
2 DHI Paddle Fan Lights	367.00
Laundry Area w/ HB Cabinets	1,115.00
ORB Bath Upgrade	495.00
Vanity Drawer Base (VDDB)	226.00
Recessed Medicine Cabinet	65.00
Harrison Rustic Birch Cabinets (disc)	3,605.00
Hi-definition Kit. Countertops	263.00
Swan Quartz Kitchen Sink	380.00
Pull-down Kohler Kit. Faucet (ORB)	235.00
Custom Cabinets	353.00
Prefinished Oak Railing	595.00
6' Trapezoid Windows (x2)	2,478.00
Pella Enc. Casement Windows (disc)	1,981.00
2 - 6' Enc. Pella Patio Doors	1,874.00
Paint 1 Side of Front Door	147.00
2nd Exterior Door Credit	-365.00

Total With Options Shown: \$172,202.00

Price Includes: Delivery up to 200 miles from PdC, WI, Crane Work, All Blueprints, R50 Ceilings, R21 Exterior Walls, Kohler Plumbing, Pella Windows, Knotty Pine Ceilings and End Walls, 200 Amp Service, All Applicable Tax and Much More!!

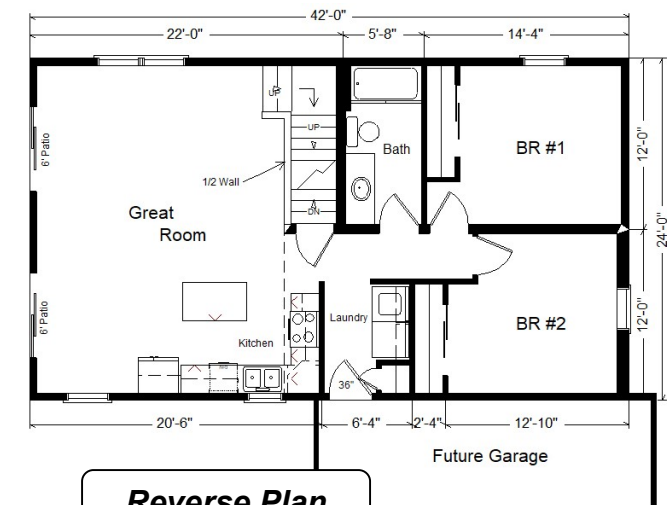


March 2021

Color Information

Seal LP Siding, Green Trim, Sand Lineals, Evergreen Metal Roof, Bisque Bath, #259 Vanity Top, Bamboo Carpet, 91181 Vinyls, Nero Sink, Saddle Oak Trim & Doors, Black Unvented Rangehood, Pella Almond Casement Windows, Pecan Car Siding on Ceiling, Golden Mascarello Countertop, ORB Hardware/ Bath

MN #BC146710



Reverse Plan