

Model #7
42' Classic Ranch
 1,008 sq. ft.

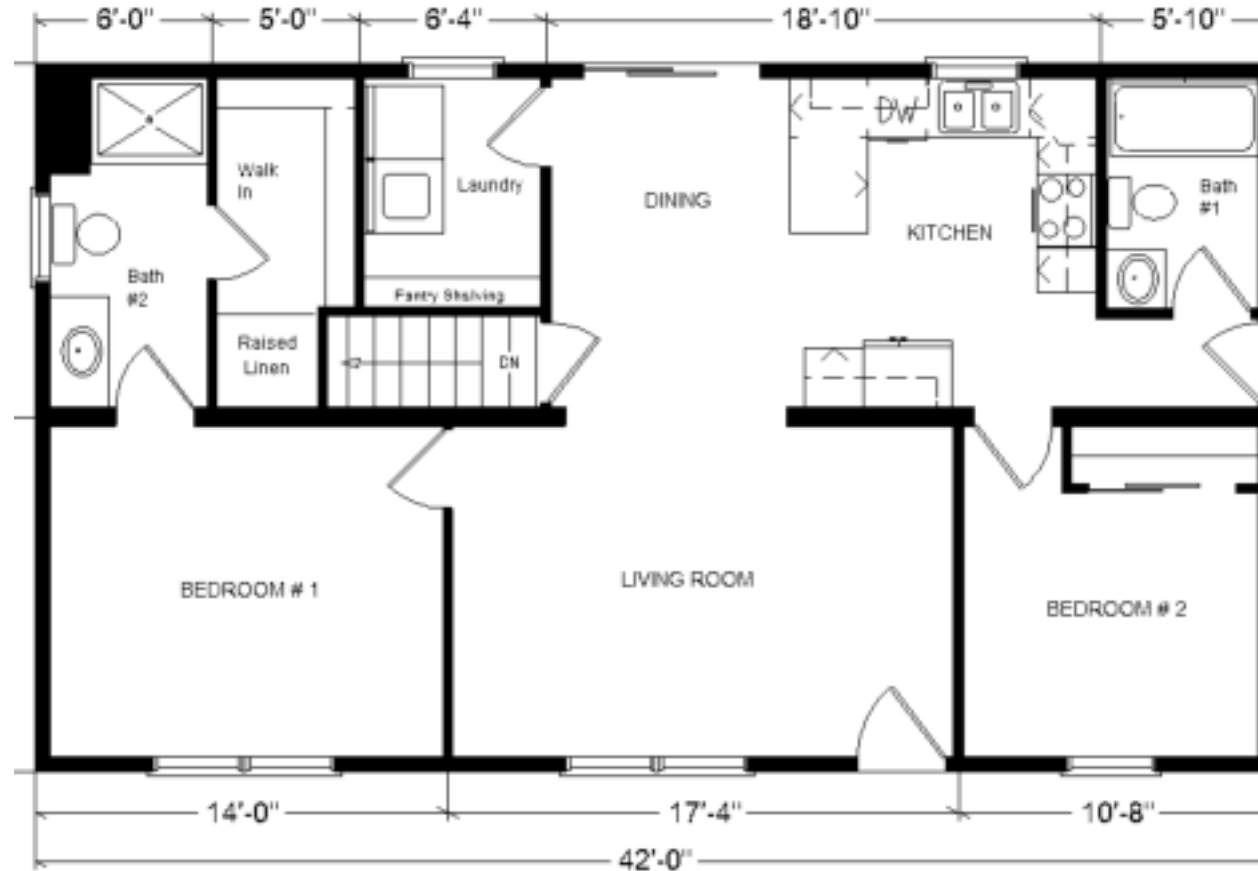
Design Homes, Inc.
 Chippewa Falls, WI
 (#10828-8-6)



| | |
|--|---------------------|
| Base Price: | \$103,470.00 |
| This Home Displays The Following Options: | |
| Window Lineals | 736.00 |
| **6' Pella Enc. Patio Door (upcharge) | 1,036.00 |
| ** 2 Extra Pella Windows | 593.00 |
| Safety Glass (Bath #2) | 278.00 |
| Ceramic Tile Backsplash | 595.00 |
| Crown Molding | 489.00 |
| Vent Rangehood to Exterior | 200.00 |
| Wire for Future Fan/Light (LR) | 55.00 |
| Vaulted Ceilings (Lr, Kit, Din.) | 929.00 |
| Extra 3/4 Bath | 2,450.00 |
| Vanity Drawer Base (VSB) | 70.00 |
| Recessed Medicine Cabinets (x2) | 130.00 |
| Laundry Area w/Cabinets | 750.00 |

Total With Options Shown: \$111,781.00

** Discontinued Pella Encompass Series



Price Includes: Crane Setting, All Blueprints, R55 Ceilings, R21 Exterior Walls, Kohler Plumbing, Pella Windows, 200 Amp Service, All Applicable Tax and Much More!!

***See Sales Rep For Applicable Delivery Fees**

MN #BC146710

Feb. 2024

Prices are Subject to Change

Reverse Plan W/Optional Garage



Color Information
 Natural Clay Siding, White Trim, Moire Black Shingles, White Lineals, SS Sink and Vented SS Rangehood, Natural Oak Trim & Doors, Bisque Baths, Bark Carpet, #48 Vinyl Plank, White Pella Sgl-hung Windows and Buttermum Granite Formica Countertops

MODEL FOR SALE!
\$99,846.00
 (11,935 Discount!)