

Base Price: \$123,877.00

This Home Displays The Following Options:

6/12 Roof Slope	2,548.00
9' Ceilings	2,781.00
Large Gable	1,995.00
Medium Gable	1,456.00
2 - 1' Bump-out Rooms	1,718.00
Premium Color Vinyl Siding	701.00
Window Lineals (x10)	650.00
Pella Lifestyle Windows	3,324.00
Pella 6' Patio Door	2,925.00
2' Octagon Window (Bath #2)	628.00
Window Grilles (x9)	612.00
Carpet Upgrade (Everything Nice)	1,275.00
Hardwood Floor (Kit, Din, Foyer, BR1)	4,455.00
3 Panel Oak Doors (x13)	2,782.00
Recessed Ceiling w/Crown Mould (LR)	874.00
Paddle Fan Light (x3)	530.00
Recessed LED Lights (x17)	1,105.00
2 Dimmer Switches	50.00
Laundry Area w/Upgrade Cabinets	1,410.00
SS Laundry Sink/Faucet	326.00
7' of Base Cabinets in Laundry	1,904.00
Extra 3/4 Bath	2,450.00
5' Shower Upgrade	178.00
Dbl. Vanity Sink (Bath #2)	725.00
Cultured Granite Vanity Tops	502.00
Recessed Medicine Cabinets (x2)	130.00
Vanity Drawer Bases (x3)	396.00
Brushed Nickel Bath Package	920.00
Wentworth Maple Cabinets	5,768.00
36" Utility Cabinet/Pantry	1,507.00
APC Cabinet Option	1,494.00
Custom Cabinets	300.00
Ceramic Tile Backsplash	350.00
Quartz Kitchen Countertops	4,227.00
Roundover Edge on Quartz Tops	560.00
Pulldown Kohler Faucet	235.00
Crown Molding (25')	425.00
Mullion Glass Doors	298.00
SS D.W and Microwave Installed	1,078.00
Suntube (x2)	1,198.00
Upgrade Front Door (Regency)	1,572.00
Painted Exterior Doors (1 Side)	294.00

Total With Options Shown: \$182,533.00

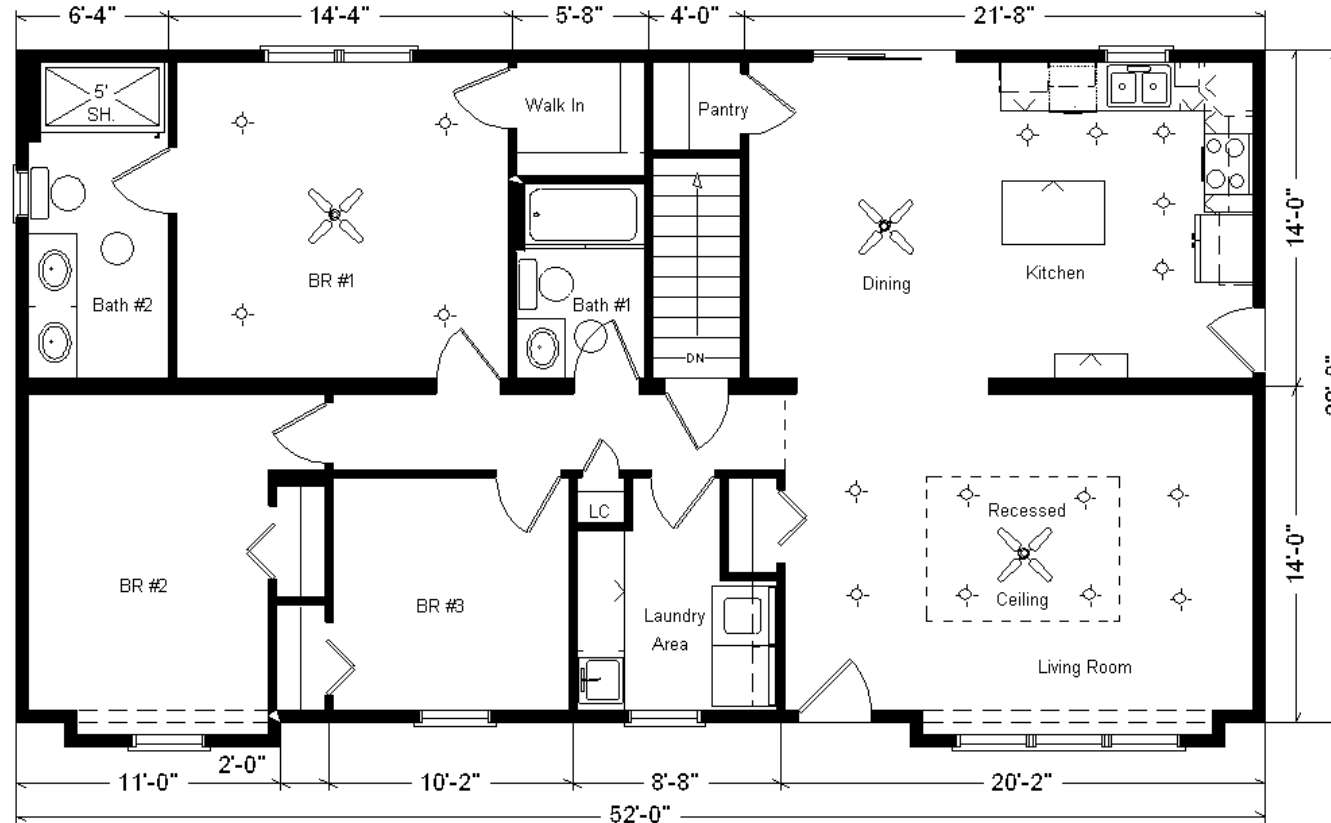
Model #4
28x52 Ranch 1,476 sq. ft.

Design Homes, Inc.

Chippewa Falls, WI
(#10524 -6- 6)



March 2021



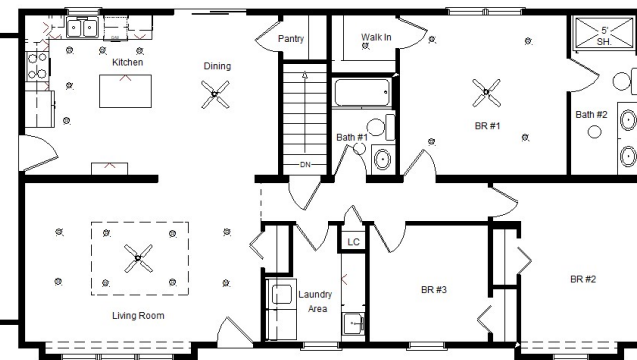
Color Information

Autumn Red Vinyl Siding, Clay Trim, Clay Corners, Heather Blend Shingles, Clay Window Lineals, SS Sink, Saddle Oak Trim & Doors, Pump. Glaze Cabinetry, Toasted Antique Durham Island, Bisque Baths, #431 Vanity Tops, Bamboo Carpet, 91181 Vinyl Floors, Fall Canyon Wood Floors, Putty Pella Dbl-hung Windows w/Saddle Stain Interiors, SS Appliances, Rolling Stone Quartz Countertop w/ Bourbon Quartz Top on Island

MN #BC146710

Buy Display Model For: \$160,944.00!
(Discounted 21,598 !)

Reverse Plan w/Optional Garage



Price Includes: Delivery of display home up to 100 miles, Crane Work, All Blueprints, R55 Ceilings, R21 Exterior Walls, Kohler Plumbing, Pella Windows, 200 Amp Service, All Applicable Tax and Much More!!