

Model #6

28x40 Loft 1,610 sq. ft.

Design Homes, Inc.

Sioux Falls, SD

(#8011 -5-1)

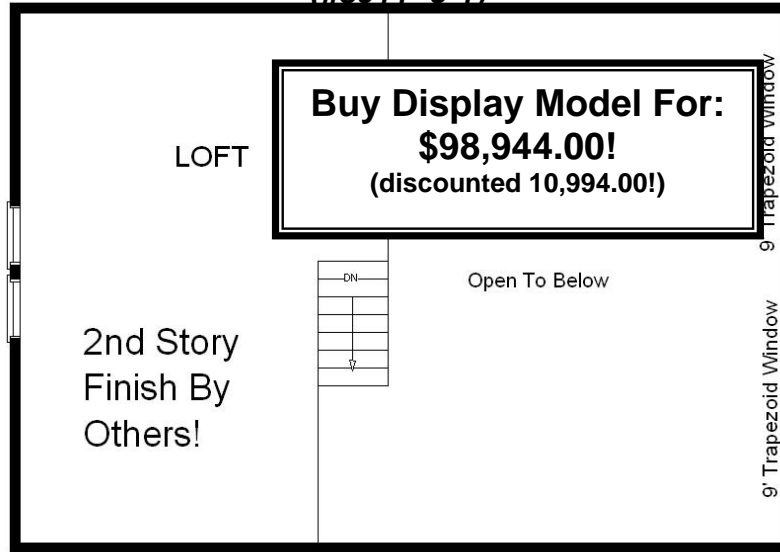
Feb. 2009



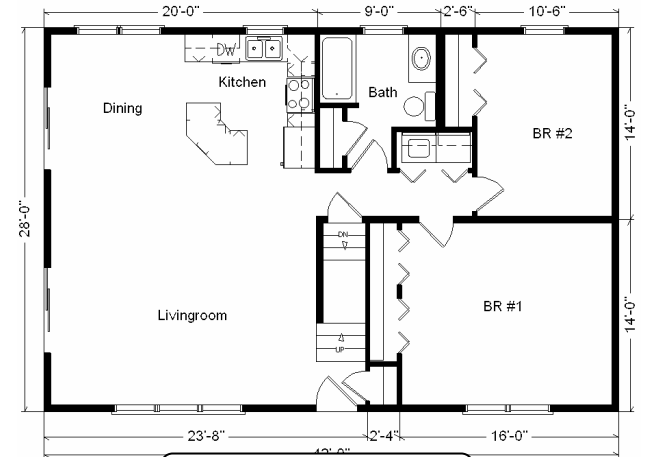
Base Price:	\$84,138.00
This Home Displays The Following Options:	
Outside Chimney Chase	669.00
* Crestline Windows (unfinished)	850.00
Vinyl Log Siding	5,444.00
Upgrade Carpet (WL)	838.00
Wood-look Laminate Floor (K,D, Hall)	986.00
Gas Fireplace	3,159.00
Oak Trim & Doors	950.00
Vanity Base Drawers	88.00
Sutton Cliffs Hickory Cabinets	4,069.00
* GE Dishwasher	421.00
2-9' Trapezoid Windows	5,780.00
* Crestline 9' Fr. Door (upcharge LR)	464.00
* Crestline 9' Fr. Door (outright Dining)	2,060.00
* Peachtree Sidelight	319.00
Exterior Door Credit	-240.00
TV/Phone Box	13.00
Shutter Credit	-70.00

Total With Options Shown: \$109,938.00

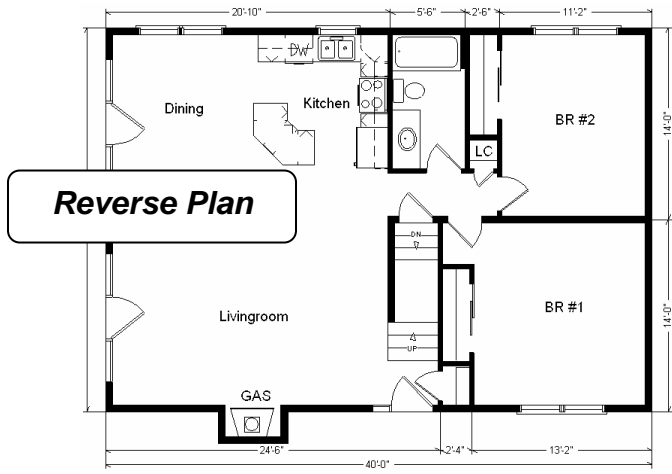
* Item/Brand Name No Longer Available



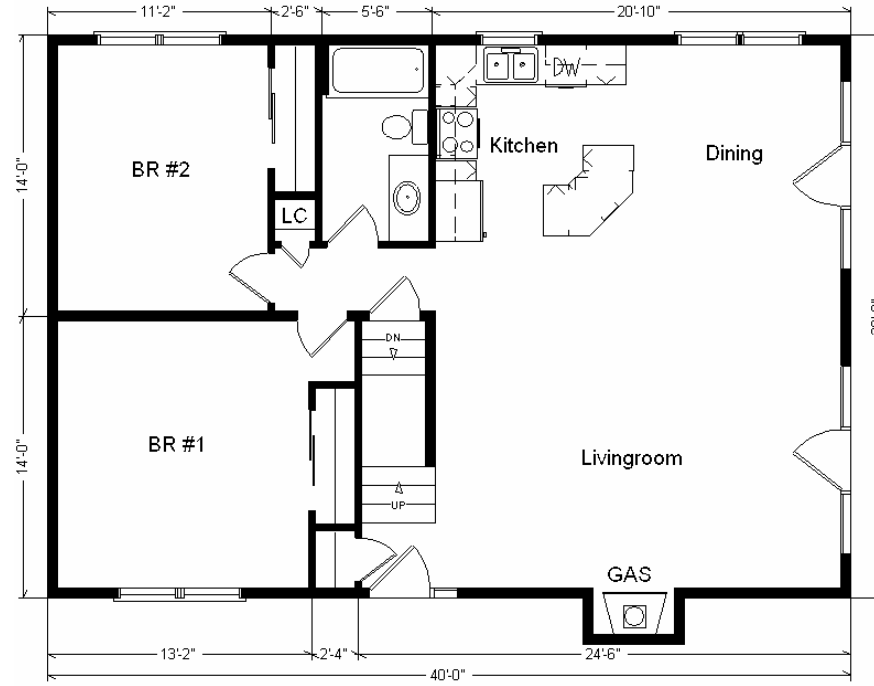
Color Information
 WC Vinyl Log Siding, Green Trim, Green Shingles, No Shutters, White Bath, Mortar Carpet, 91050 Vinyl, 2513 Laminate, Autumn Oak Trim & Doors, SS Sink, Green Crestline Dbl-hung Windows, White DW and Rangehood, Black Fireplace Front Nat. Limestone Countertop



28x42 Variation...



Price Includes All Blueprints, Delivery, Crane Work, Water Heater, Finish Ready For Hookups, Lennox Furnace Installed, & Tax!



28 x42 Base Price:	\$ 86,951.00
With the most Popular Options:	
Whirlpool Dishwasher.....	439.00
2-6' Patio Doors.....	1,610.00
2-6' Trapezoid Windows.....	3,478.00
Utility Room w/Cabinets.....	695.00
Variation Total w/Options:..	\$93,173.00