

# Model #2

28x44 Ranch 1,232 sq. ft.

# Design Homes, Inc.

Sioux Falls, SD  
 (#1418 -4-5)

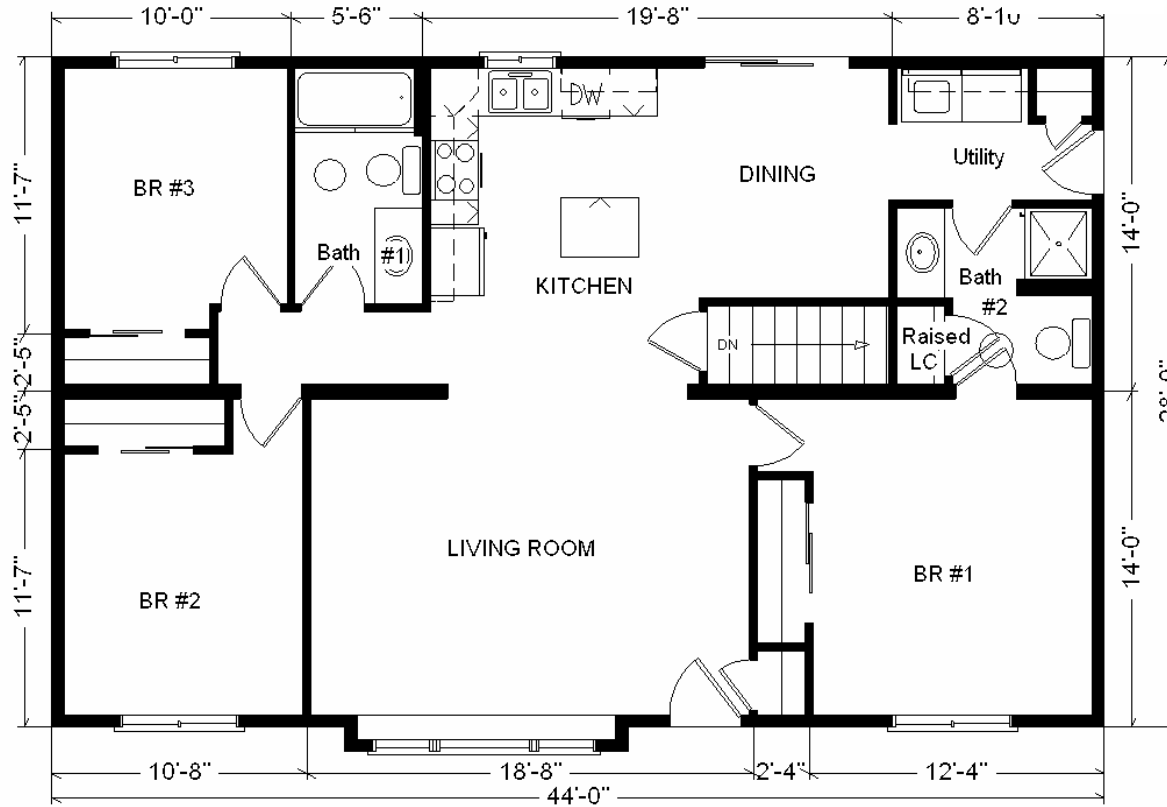
Feb. 2009



<b>Base Price:</b>	<b>\$74,067.00</b>
<b>This Home Displays The Following Options:</b>	
* 6' Roof Rise (4.68/12 Slope)	1,452.00
Large Gable	1,074.00
1' Bump-out Window (LR)	764.00
Carpet Upgrade (Gorham)	632.00
Wood-look Laminate Floor (K,D,Foy.)	923.00
Vaulted Ceilings (Kitchen,DR,LR)	880.00
Oak Trim & Doors	950.00
Tv/Phone Box	13.00
Extra 3/4 Bath	1,839.00
Utility w/Spring Valley Cabinets	820.00
Vanity Drawer Base (x2)	176.00
Spring Valley Med. Cabinets	1,280.00
* GE Dishwasher	421.00
Suntube (x2)	1,060.00
* Kolbe Double Slide Windows	500.00
* 6' Kolbe Patio Door	581.00

**Total With Options Shown: \$87,432.00**

\* Item/Brand Name No Longer Available

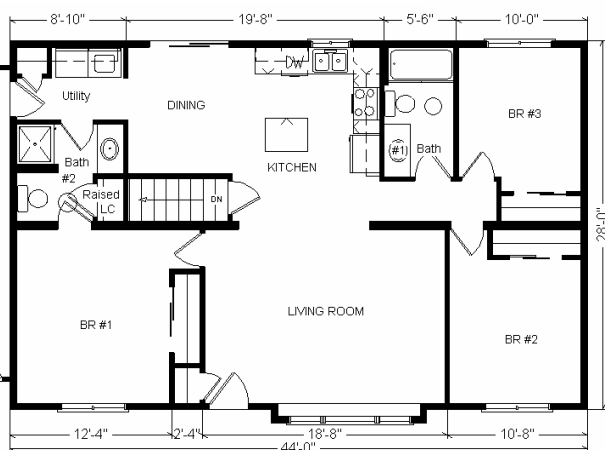


**Color Information**  
 Natural Clay Siding, White Trim,  
 Weathered Wood Shingles, Green Shutters,  
 White Baths, 91050 Vinyl's, Stonedust  
 Carpet, 2513 Laminates, SS Sink, Nutmeg  
 Oak Trim & Doors, White DW &  
 Rangehood, White Kolbe Dbl-slider Vinyl  
 Windows, Beige Pampas Countertop

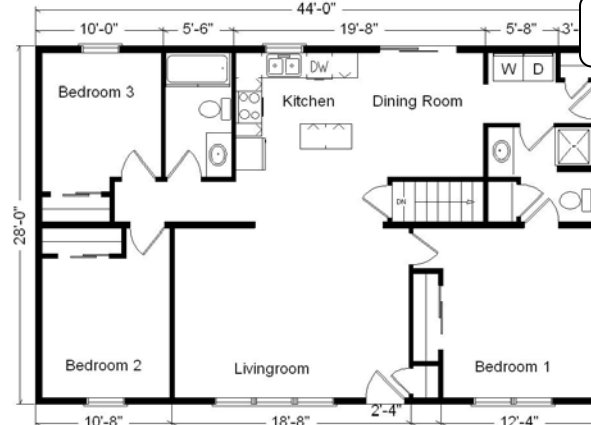
**Buy Display Model For:**  
**\$78,689.00!**  
 (discounted 8,743.00!)

**Price Includes All**  
**Blueprints, Delivery, Crane**  
**Work,**  
**Water Heater,**  
**Finish Ready For Hookups,**  
**Lennox Furnace Installed,**  
**& Tax!**

**Reverse Plan**  
**w/Optional**  
**Garage Shown**



**Variation...**



<b>Base Price:</b> .....	<b>\$ 74,067.00</b>
<b>With the most Popular Options:</b>	
Whirlpool Dishwasher.....	439.00
Utility Hook-ups.....	395.00
6' Patio Doors.....	481.00
¾ Bath.....	1,839.00
Central Air.....	2,140.00
<b>Variation Total w/Options:..</b>	<b>\$79,361.00</b>