

Model #1

28x50 Ranch 1,418 sq. ft.

Design Homes, Inc.

Sioux Falls, SD

(#1477 -5-5)



Feb. 2009

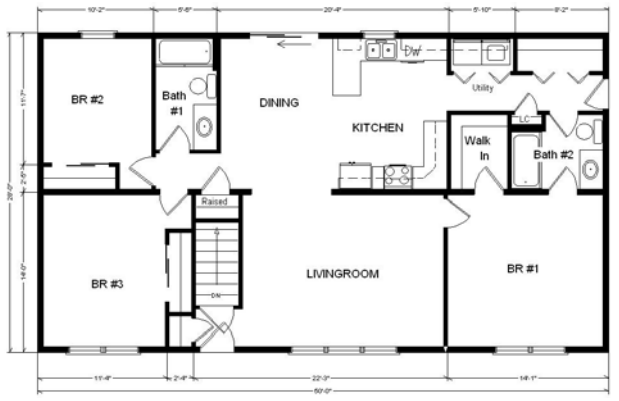
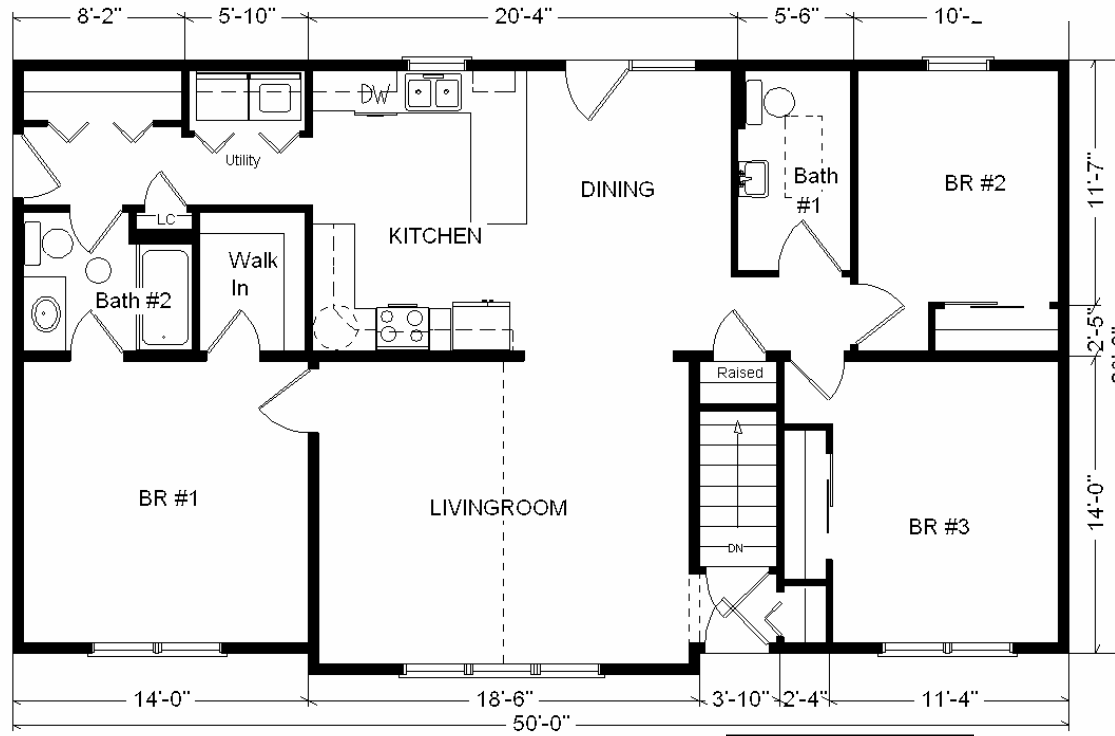
Base Price:	\$80,815.00
This Home Displays The Following Options:	
* 6' Roof Rise (approx. 4.68/12 Slope)	1,650.00
Rev Vault Gable-1' Bump-Out	2,674.00
Carpet Upgrade (WL)	986.00
Mastic Timberstone Siding	2,048.00
Oak Trim and Doors	1,150.00
Paddle Fan Light (LR)	164.00
Tv/Phone Box (x4)	52.00
Extra 1/2 Bath	1,035.00
Handi-cap Grab Bars	90.00
Handi-cap Toilet	95.00
Utility Hook-Up w/Northport Cabinets	695.00
Tri View Medicine Cabinets (Bath #2)	120.00
Vanity Drawer Base	88.00
Shower Door (Bath #2)	160.00
Spring valley Oak Cabinets	1,280.00
Lazy Susan	332.00
Kohler Cast Iron Sink	284.00
* Kolbe 4' Radius Top Window (LR)	492.00
Suntube (Bath#2)	530.00
Skylight (Bath#1QFS156)	683.00
* Kolbe Double Hung Windows	500.00
Window Grilles	378.00
Exterior Door Lever Handles	87.00
Interior Door Lever Handles	185.00
* Prado 6' Fr. Patio Door (DR)	566.00

Total With Options Shown: \$97,139.00

* Item/Brand Name No Longer Available

Price Includes All Blueprints, Delivery, Crane Work, Water Heater, Finish Ready For Hookups, Lennox Furnace Installed, & Tax!

Color Information
 Timberstone Siding, Almond Trim, Black Shingles, Black Shutters, Bisque Baths, 91070 Vinyl's, Mortar Carpet, White Sink, SS Appliances, Nutmeg Oak Trim & Doors, Beige Kolbe Dbl-hung Vinyl Windows, Natural Limestone Countertop



Drapes & appliances shown are optional and not included in Total price.

Reverse Plan w/Optional Garage Shown

Variation...

Base Price:	\$ 80,815.00
With the most Popular Options:	
Whirlpool Dishwasher.....	439.00
6' Patio Door.....	481.00
Extra Full Bath.....	1,839.00
Utility Area w/Cabinets.....	695.00
Central Air.....	2,140.00
Variation Total w/Options:	\$86,409.00

