

Model #4

28x44 Ranch 1,232 sq. ft.

Design Homes, Inc.

Salix, IA
 (#1582 -7-5)

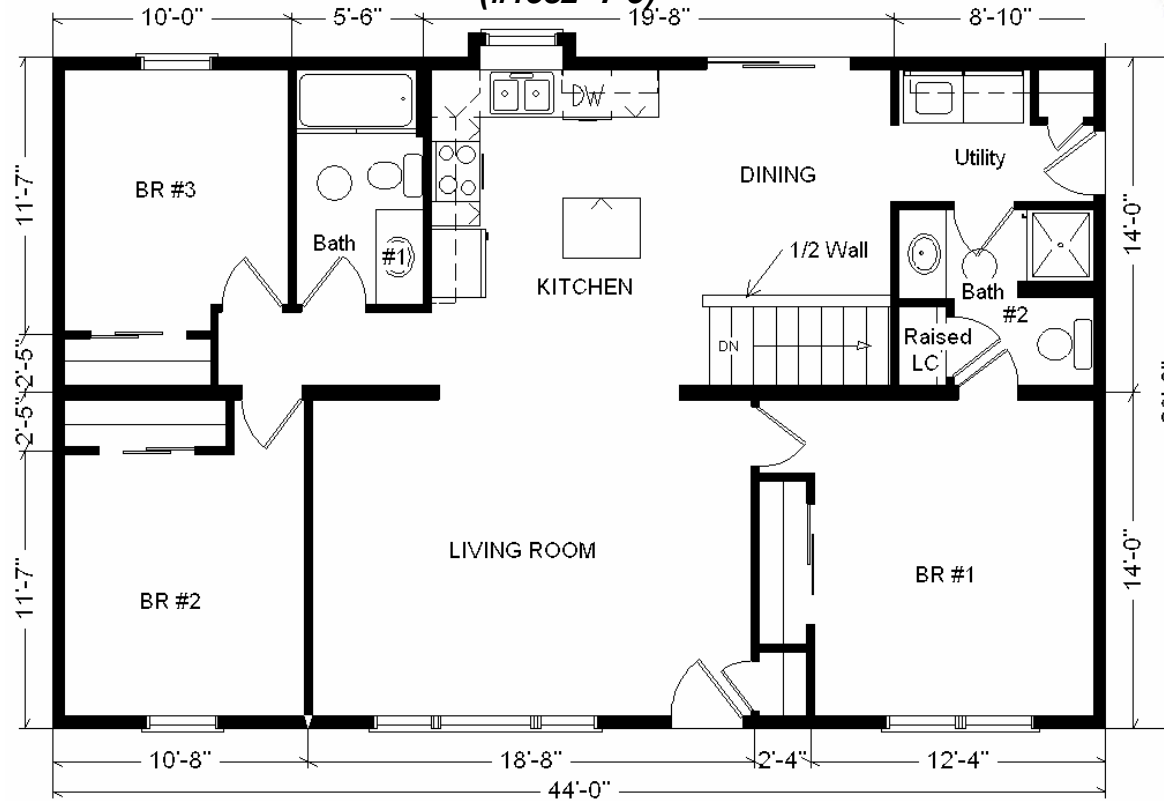
Feb. 2009



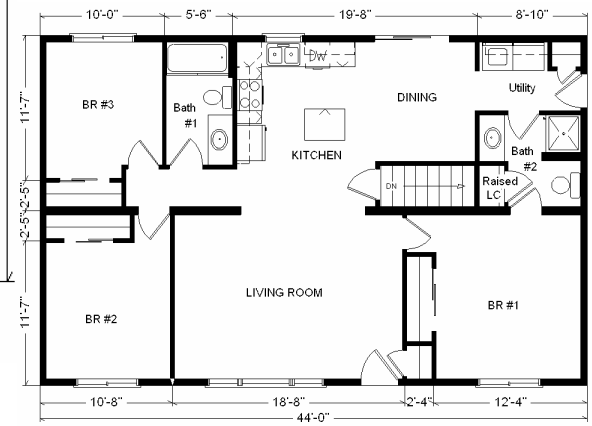
Base Price:	\$74,067.00
This Home Displays The Following Options:	
* 6' Roof Rise (approx. 4.68/12 Slope)	1,452.00
Large Gable	1,074.00
1' Bump-out Kitchen Window	464.00
Visons Dbl-hung Windows	500.00
Carpet Upgrade (Gorham)	672.00
Vaulted Ceilings (Kitchen,DR,LR)	880.00
Oak Trim & Doors	950.00
Mirrored Closet Doors	205.00
Tv/Phone Box	13.00
Paddle Fan/Light	164.00
Extra 3/4 Bath	1,839.00
Utility w/Spring Valley Cabinets	820.00
Vanity Drawer Bases	176.00
Spring Valley Med. Cabinets	1,280.00
Whirlpool Dishwasher	439.00
Velux Skylight (QFS156 Bath)	683.00
Suntube (x2)	1,060.00
6' Visions Patio Door	481.00

Total With Options Shown: \$87,219.00

* Item/Brand Name No Longer Available

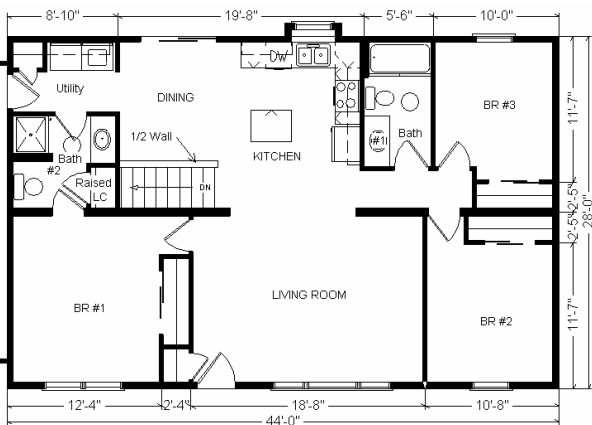


Color Information
 Granite Gray Siding, White Trim,
 Black Shingles,
 White Shutters, White & Bisque Baths,
 Stonedust Carpet, 91082/91070/91057
 Vinyls, SS Sink, Nutmeg Oak Trim &
 Doors, Black DW, Bisque Rangedhood,
 White Visions Dbl-hung Vinyl Windows,
 Butterum Granite Countertop



Variation...

**Reverse Plan
 w/Optional
 Garage Shown**



**Price Includes All Blueprints,
 Delivery, Crane Work,
 Water Heater,
 Finish Ready For Hookups,
 Lennox Furnace Installed, & Tax!**

Base Price:	\$ 74,067.00
With the most Popular Options:	
Whirlpool Dishwasher.....	439.00
Utility Hook-ups.....	395.00
6' Patio Doors.....	481.00
¾ Bath.....	1,839.00
Central Air.....	2,140.00
Variation Total w/Options:..	\$79,364.00