

Model #3

28x42 Loft 1,743 sq. ft.

Design Homes, Inc.

Plover, WI
 (#7974 -4-1)

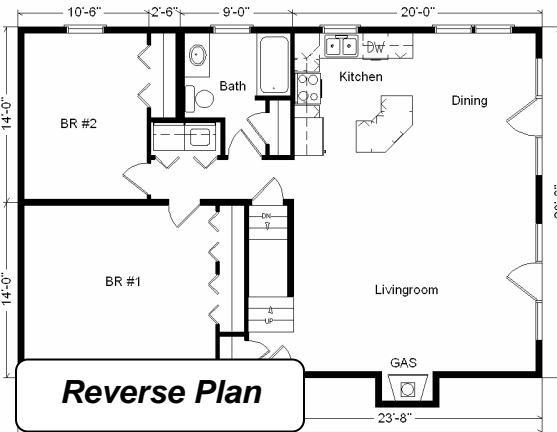
Feb. 2009



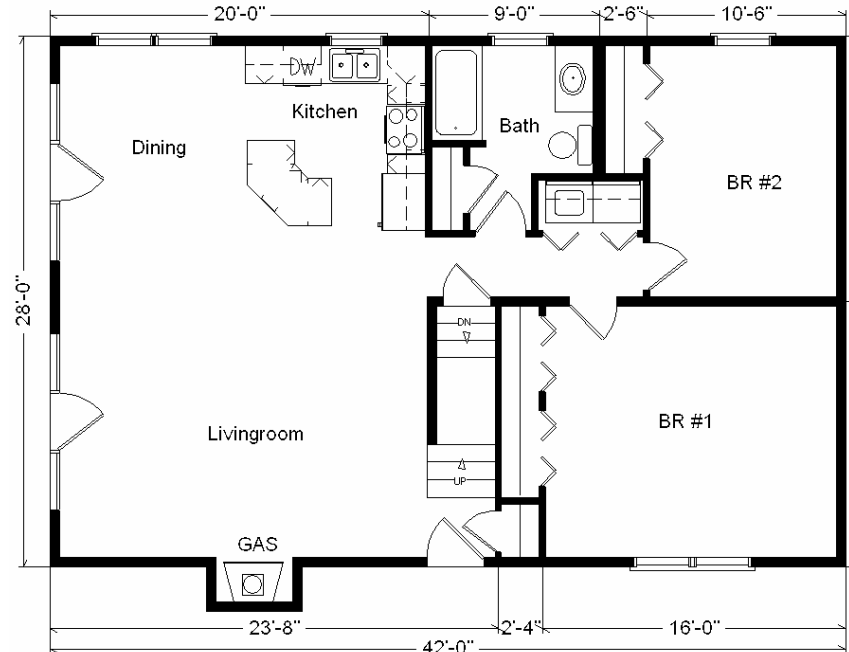
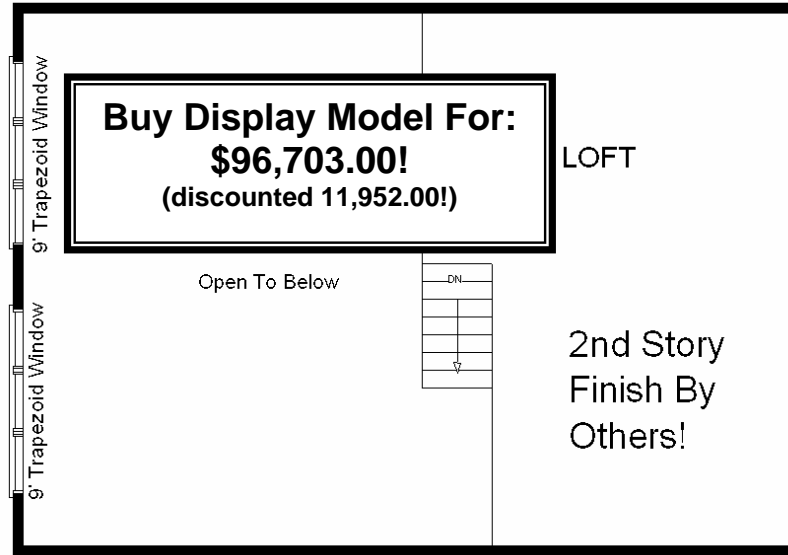
Base Price:	\$86,951.00
This Home Displays The Following Options:	
Outside Chimney Chase	669.00
Vinyl Log Siding	5,583.00
Carpet Upgrade (Gorham)	583.00
Laminate Flooring (Kitchen, DR)	927.00
Gas Fireplace	3,159.00
Tv/Phone Box	13.00
Utility w/Shelf	395.00
Vanity Base Upcharge	88.00
Tri View Medicine Cabinets	120.00
Spring Valley Medium Cabinets	1,280.00
* GE Dishwasher	421.00
* 2-9' Crestline Trapezoid Wnds	5,402.00
* Crestline Window Upgrade Unfinished	850.00
* 9' Crestline Fr. Door (DR outright)	2,060.00
* 9' Crestline Fr. Door (LR upcharge)	464.00
Exterior Door Credit	-240.00
Shutter Credit	-70.00

Total With Options Shown: \$108,655.00

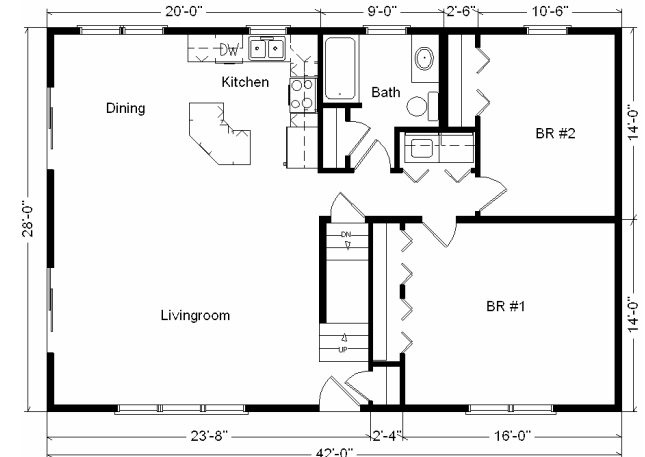
* Item/Brand Name No Longer Available



Price Includes All Blueprints, Delivery, Crane Work, Water Heater, Finish Ready For Hookups, Lennox Furnace Installed, & Tax!



Color Information
 WC Vinyl Log Siding, Green Trim, Green Shingles, White Bath, Stonedust Carpet, 91070 Vinyls, Standard Trim & Doors, SS Sink, Green Crestline Dbl-hung Windows, Bisque Dishwasher & Rangehood, Beige FP Front, Nat. Limestone Countertop, Spring Valley Medium Cabinets



Variation...

Base Price:	\$ 86,951.00
With the most Popular Options:	
Whirlpool Dishwasher.....	439.00
Utility Hook-ups.....	395.00
2-6' Patio Doors.....	1,610.00
2-6' Trapezoid Windows.....	3,478.00
Central Air.....	2,140.00
Variation Total w/Options:..	\$96,013.00