

# Model #8

28x42 Loft 1,743 sq. ft.

# Design Homes, Inc.

Missouri Valley, IA

(#7598 -4-1)



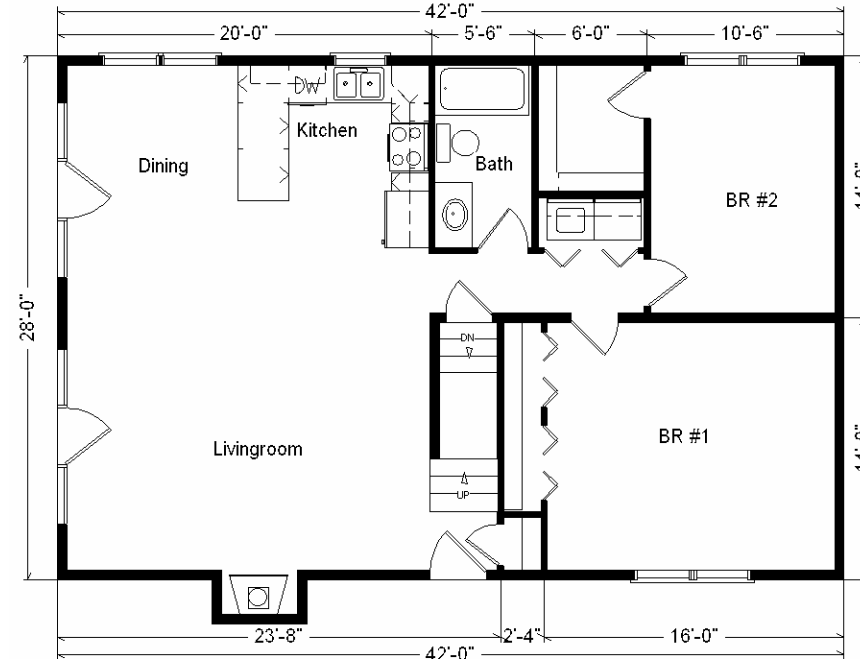
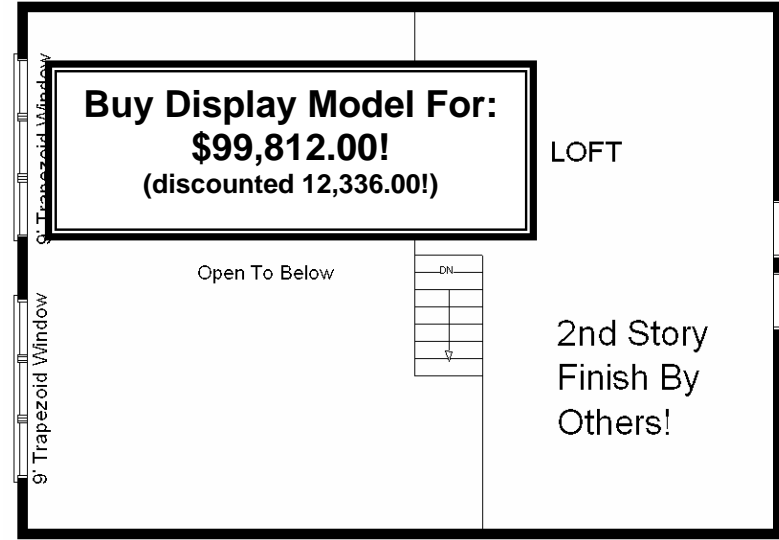
<b>Base Price:</b>	<b>\$86,951.00</b>
<b>This Home Displays The Following Options:</b>	
Outside Chimney Chase	669.00
Vinyl Log Siding	5,583.00
Carpet Upgrade (WL)	821.00
Gas Fireplace	3,159.00
Oak Trim & Doors	950.00
Raised 6 Panel Doors (x9)	1,755.00
Rosettes (x44)	141.00
Tv/Phone Box	13.00
Cast Iron Sink	284.00
Utility Hook-Up w/Northport Cabinets	695.00
Spring Valley Medium Cabinets	1,280.00
Crown Molding (x19' )	127.00
* GE Dishwasher	421.00
Window Grills (x7)	287.00
* Crestline Trapezoid Wds. (x2)	5,402.00
Extra Window (Bdr. #2)	532.00
* Crestline Windows	850.00
* 9' Crestline Fr. Door (DR outright)	2,060.00
* 9' Crestline Fr. Door (LR upcharge)	464.00
Exterior Door Credit	-240.00
Shutter Credit	-56.00

**Total With Options Shown: \$112,148.00**

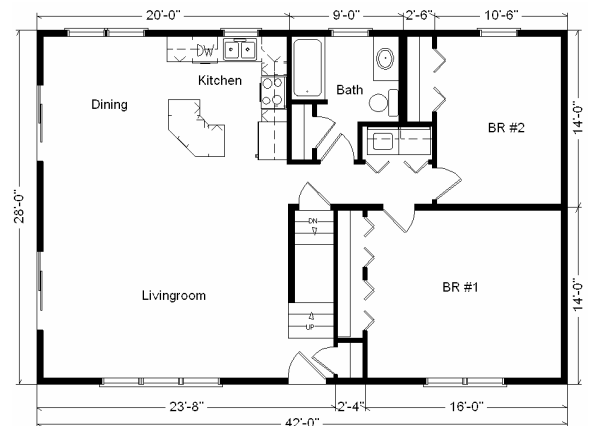
\* Item/Brand Name No Longer Available

Feb. 2009

**Price Includes All Blueprints, Delivery, Crane Work, Water Heater, Finish Ready For Hookups, Lennox Furnace Installed, & Tax!**



**Color Information**  
*W. Cedar Vinyl Log Siding, Green Trim, Green Shingles, Bisque Bath, Willow Carpet, 91061 Vinyls, Bisque Sink, Nutmeg Oak Trim & Doors, Bisque Dishwasher & Rangehood, Green Crestline Dbl-hung Windows, Sand Spectrum Countertop, Beige FP Front*



**Variation...**

<b>Base Price:</b> .....	<b>\$ 86,951.00</b>
<b>With the most Popular Options:</b>	
Whirlpool Dishwasher.....	439.00
Utility Hook-ups.....	395.00
2-6' Patio Doors.....	1,610.00
2-6' Trapezoid Windows.....	3,478.00
Central Air.....	2,140.00
<b>Variation Total w/Options:..</b>	<b>\$96,013.00</b>