

Model #7

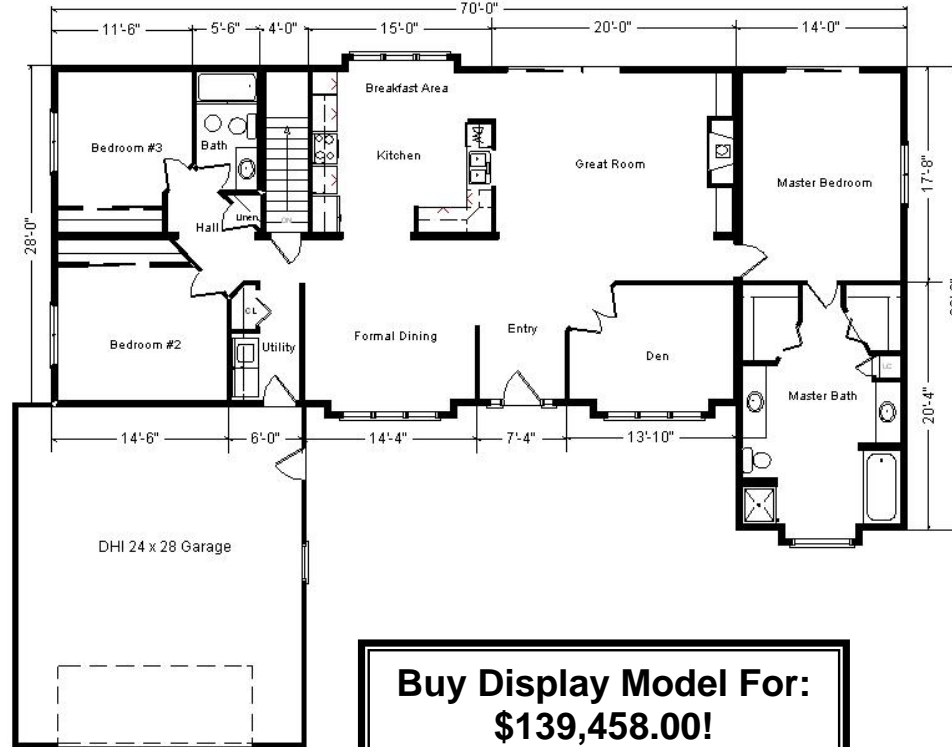
28x75 3-Sec Ranch 2,100 sq. ft.

Design Homes, Inc.

Ham Lake, MN
(#7572 -3-4)

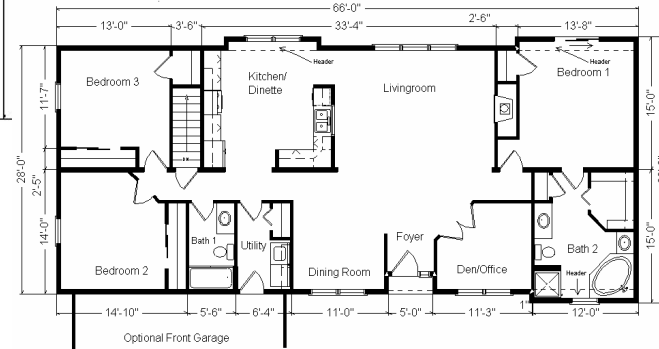


Base Price:	\$120,013.00
This Home Displays The Following Options:	
* 7 1/2' Roof Rise (6/12 Slope)	3,300.00
Large Gable	1,074.00
1' Bump-Out Of Room (x4)	3,056.00
Hip Roof	1,809.00
9' Ceilings	4,830.00
Carpet Upgrade (WL)	1,493.00
Laminate (Foyer)	555.00
Electric Fireplace (mantel only)	1,560.00
Vaulted Ceiling (Kitchen, DR, LR Entry)	1,654.00
Oak Trim & Doors	1,150.00
Interior French Doors w/Glass	534.00
4' Florescent Cloud Light (Kitchen)	147.00
Tv/Phone Box	13.00
Cast Iron Sink	284.00
Extra 3/4 Bath	1,839.00
Utility Hook-Ups w/Seneca Ridge Cabinets	875.00
Shower Door	160.00
6' Whirlpool	1,950.00
Extra 5' Vanity Med Cabinets	917.00
Vanity Base Drawer (x4)	352.00
Seneca Ridge Oak Cabinets	2,137.00
24" Utility Cabinet w/Shelves	526.00
18" Cutting Board Knife Kit (CBK18)	166.00
Appliance Garage Diagonal	133.00
Merillat Book Cases (x2)	1,936.00
* GE Dishwasher	421.00
* GE Space Maker Microwave	535.00
Suntube	530.00
* Crestline Windows (Unfinished)	850.00
Casement Window Upcharge	4,563.00
Transom Window Above Front Door	484.00
* Crestline 5' Radius Bath Window	893.00
* Front Entry Door w/Sidelights	2,006.00
* 9' Citadel Patio Door unstained (LR upcharge)	294.00
* 6' Prado French Slider (BR #1)	1,030.00
Total With Options Shown:	\$164,069.00



Buy Display Model For:
\$139,458.00!
(discounted 24,611.00!)
HOME ONLY

Color Information
Heritage Cream Siding, White Trim,
Green Shingles,
Green Shutters, White Baths, Toast Carpet,
91082 Vinyls, Nutmeg Oak Trim & Doors,
Crestline White Casement Windows,
Bisque DW & Microwave,
Beige Pampas Countertop, Bisque Sink



28x66 Variation...

Optional Garage
24' x 28'
Base Price.....11,679.00
7'6" Roof Rise.....1,232.00
Gable Garage Roof...1,620.00
Total.....\$14,531.00

Price Includes All Blueprints, Delivery, Crane Work, Water Heater, Finish Ready For Hookups, Lennox Furnace Installed, & Tax!

Base Price:..... \$ 99,938.00
With the most Popular Options:

3-Bump-out Rooms.....	2,292.00
Recessed Entry.....	537.00
6' Patio Doors in BR.....	498.00
Whirlpool Dishwasher... ..	439.00
Utility Area w/Cabinets.....	695.00
¾ Bath w/Corner Tub & Double Sinks.....	3,704.00
Interior Double Doors w/Glass.....	534.00
Variation Total w/Options:.....	\$108,619.00

* Item/Brand Name No Longer Available

Feb. 2009