

Model #1

28x62 Ranch w/SR 1,988 sq. ft.

Design Homes, Inc.

Ham Lake, MN
(#7130 -2-4)



Base Price: \$94,314.00

This Home Displays The Following Options:

* 6' Roof Rise (4.68/12 Slope)	2,046.00
Large Gable	1,074.00
Extra Gable Detail	193.00
Upgrade Siding Mastic/Quest	2,655.00
Upgrade Carpet (WL)	935.00
Hard Wood Flooring(Family Room)	1,762.00
Wood Fireplace	2,498.00
Vaulted Ceilings (LR, DR, Kitchen Fm Rm)	1,630.00
Oak Trim & Doors	1,150.00
Interior French Doors w/Glass	534.00
Paddle Fan w/Light (DR)	126.00
4' Flourescent Light Kitchen	66.00
Extra 3/4 bath	1,839.00
Utility Hook-Up w/Northport Cabinets	695.00
Double Sink Vanity	565.00
6' Whirlpool	1,950.00
Shower Door (x2)	320.00
Tri View Medicine Cabinets (X3)	360.00
Seneca Ridge Maple Cabinets	3,208.00
Moveable Island	1,037.00
Kitchen Sprayer	25.00
Microwave Shelf (MOS30)	236.00
Crown Molding (20')	134.00
* GE Dishwasher	421.00
* Crestline Windows (Unfinished)	850.00
* Walk-Out Bay (LR)	1,560.00
* Casement Windows (Bdr 1,2,3)	1,657.00
* Upgrade Kitchen Window	361.00
10" Suntube	530.00
Skylight (x4 Polycarbonate)	1,700.00
Home Total w/Options	\$126,431.00

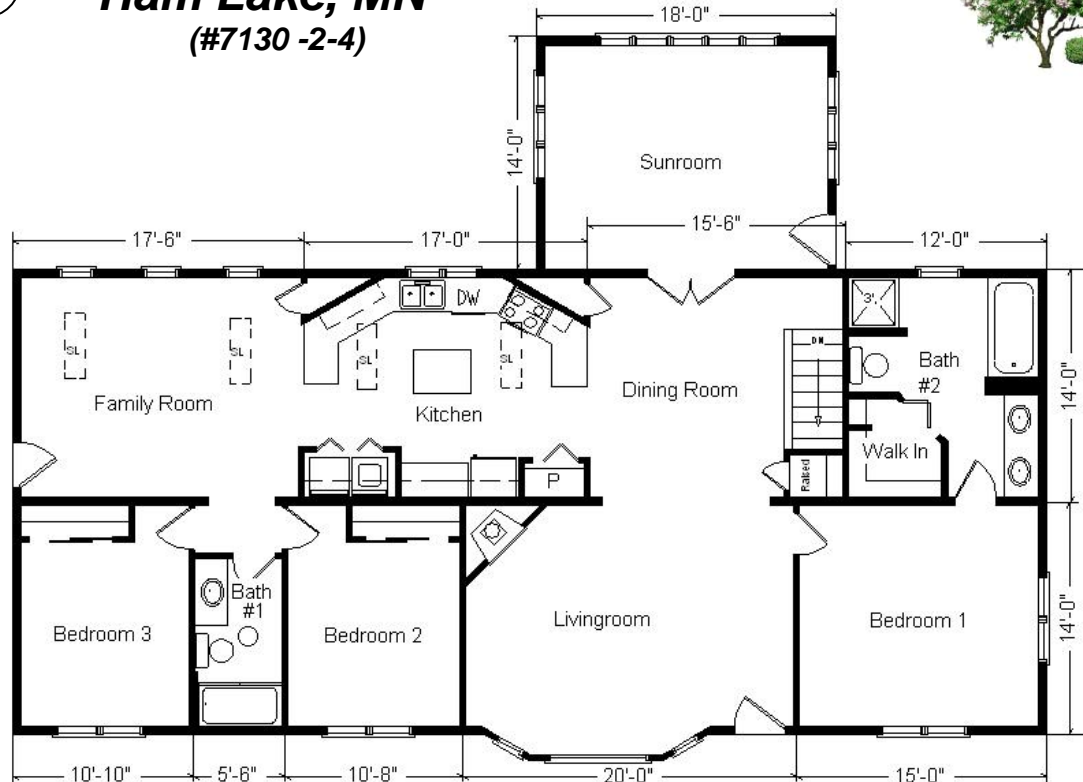
14 x 18 Sunroom w/Gable Base Price	\$16,331.00
Upgrade Carpet (WL)	296.00
Vaulted Ceiling	428.00
* Upgrade Windows	2,850.00
Sunroom Total w/Options	\$19,905.00

Total With Options Shown: \$146,336.00

* Item/Brand Name No Longer Available

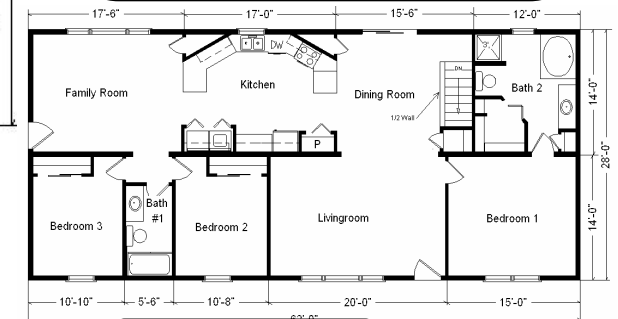
Buy Display Model For:
\$127,312.00!
(discounted 19,024.00!)

Color Information
Timberstone Siding, Bronze Trim,
Shadow Black Shingles, Green Shutters,
White Baths, Parchment Carpet,
Autumn Oak Trim & Doors, SS Sink,
91050 Vinyls, Black Dishwasher,
Pewtertone Crestline Casement
Windows, Melange Countertop,
Seneca Ridge Arch Maple Cabinets

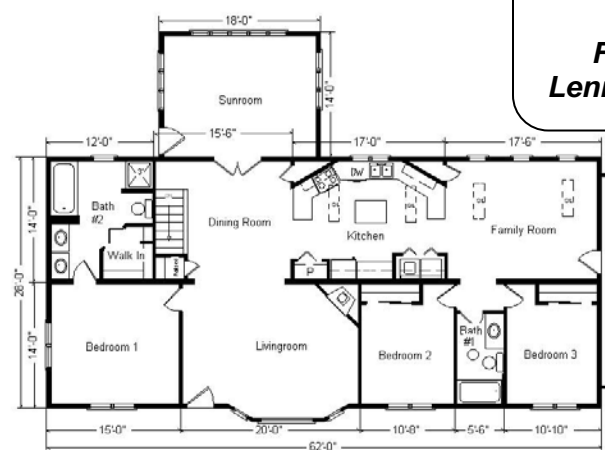


Feb. 2009

**Price Includes All Blueprints,
Delivery, Crane Work,
Water Heater,
Finish Ready For Hookups,
Lennox Furnace Installed, & Tax!**



Variation...



**Reverse Plan
w/Optional
Garage Shown**

Base Price:	\$ 94,314.00
With the most Popular Options:	
Whirlpool Dishwasher.....	439.00
Utility Hook-ups.....	395.00
6' Patio Door.....	481.00
¾ Bath.....	1,839.00
Garden Tub.....	769.00
Variation Total w/Options:..	\$98,237.00