

# Model #1

28x62 Ranch 1,736 sq. ft.

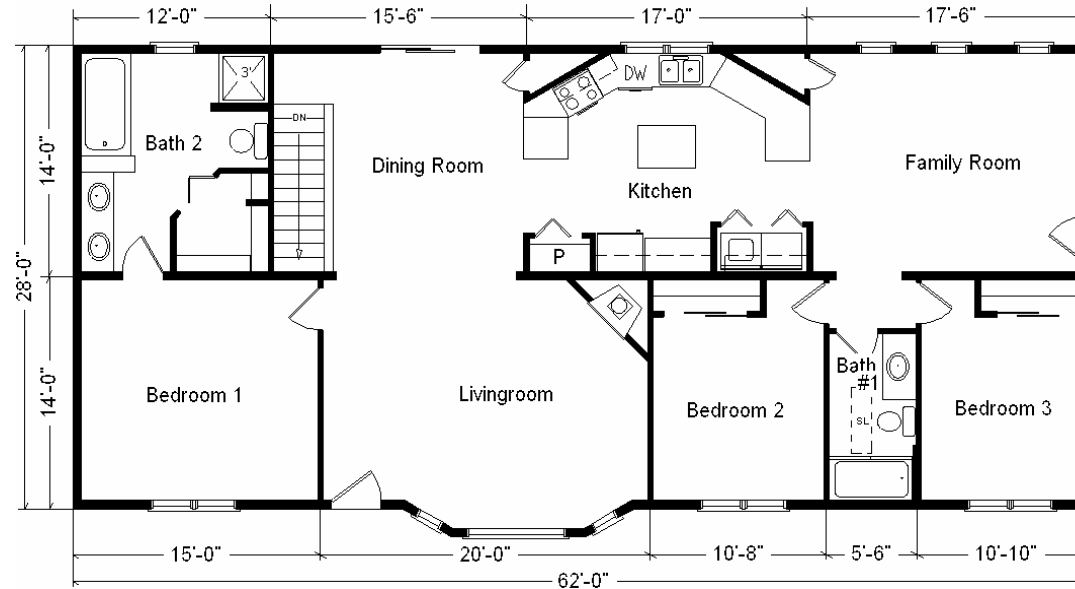
# Design Homes, Inc.

Greenwood, NE  
(#1220 -1-5)



<b>Base Price:</b>	<b>\$94,314.00</b>
<b>This Home Displays The Following Options:</b>	
* 6' Roof Rise (4.68/12 Slope)	2,046.00
Large Gable	1,074.00
Upgrade Carpet (Gorham)	934.00
Laminate Floor (Family Room)	814.00
Gas Fireplace	3,159.00
Vaulted Ceilings (LR, DR, Kitchen Fm Rm)	1,630.00
Oak Trim & Doors	1,150.00
Extra 3/4 bath	1,839.00
Utility Hook-Up w/Shelf	395.00
Double Sink Vanity	565.00
6' Whirlpool	1,950.00
Seneca Ridge Cabinets	2,137.00
Moveable Island	592.00
Skylight	683.00
* Kolbe Walk-Out Bay (LR)	1,070.00
* Kolbe Family Room Windows	131.00
* Kolbe Casement Windows (Bdr 1,2,3)	1,215.00
* Kolbe Upgrade Kitchen Window	409.00
* 6' Prado French Slider (DR)	610.00

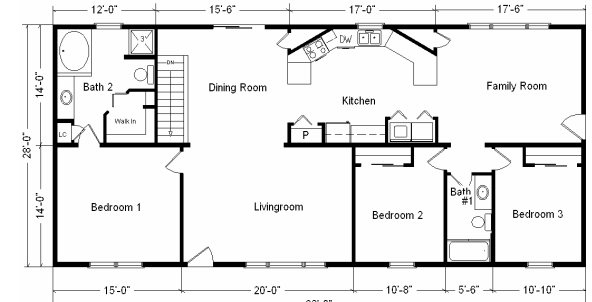
**Total With Options Shown: \$116,717.00**



**Buy Display Model For:**  
**\$99,209.00!**  
(discounted 17,508.00!)

**Color Information**  
Natural Clay Siding, White Trim, Moire Black Shingles, Black Shutters, White Baths, Parchment Carpet, 91070 Vinyl, Nutmeg Oak Trim & Doors, SS Sink, Kolbe Casement Windows

**Price Includes All Blueprints, Delivery, Crane Work, Water Heater, Finish Ready For Hookups, Lennox Furnace Installed, & Tax!**



**Variation...**

<b>Base Price:</b>	<b>\$ 94,314.00</b>
<b>With the most Popular Options:</b>	
Whirlpool Dishwasher	439.00
Utility Hook-ups	395.00
6' Patio Door	481.00
¾ Bath	1,839.00
Garden Tub	769.00
<b>Variation Total w/Options:</b>	<b>\$98,237.00</b>

\* Item/Brand Name No Longer Available

Feb. 2009

*Drapes & appliances shown are optional and not included in Total price.*

**Reverse Plan w/Optional Garage Shown**

