

Model #5

28x76 4-Sec Ranch 2,128 sq. ft.

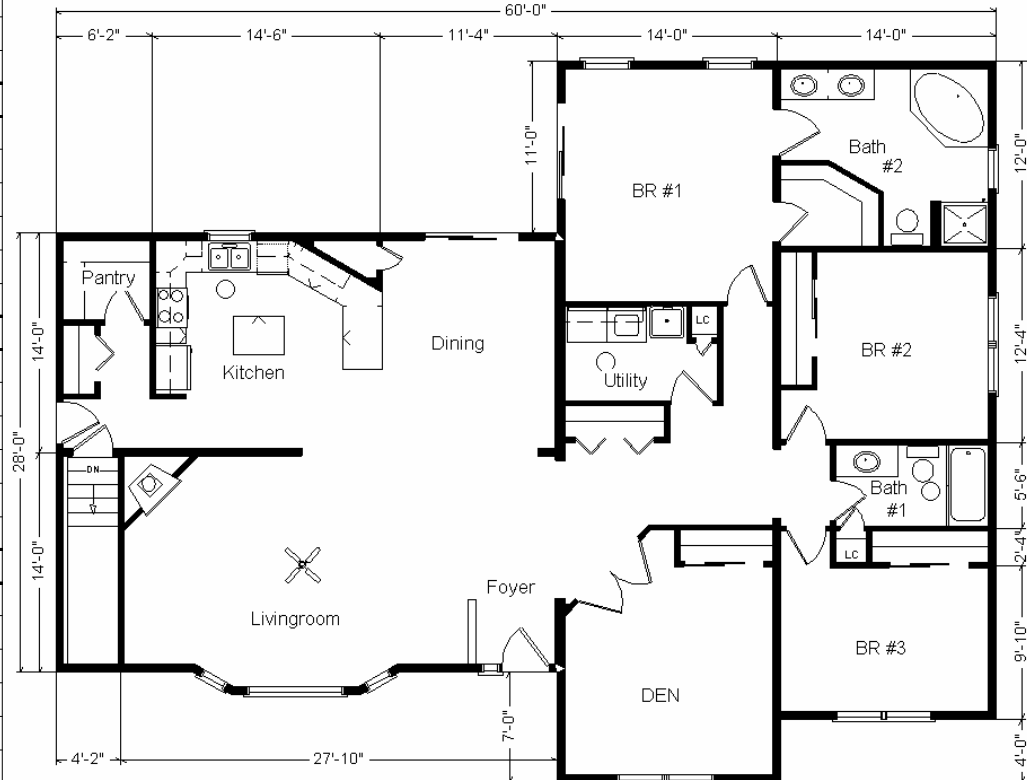
Design Homes, Inc

Green Bay, WI
(#9189 -8-4)

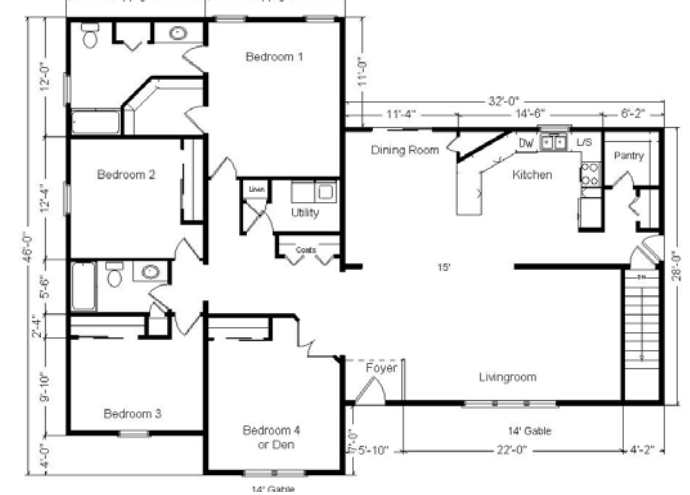


Base Price:	\$121,454.00
This Home Displays The Following Options:	
6/12 Roof Slope	3,344.00
Large Gable	1,074.00
Upgrade Carpet (Divinity)	2,272.00
Laminate Tile (Foyer)	108.00
Gas Fireplace	3,159.00
Vaulted Ceilings (LR, DR, Kitchen)	1,250.00
Oak Trim & Doors	1,150.00
Interior French Doors w/Glass	534.00
Paddle Fan Light (LR)	189.00
Extra 3/4 Bath	1,839.00
Utility Hook-Up w/Northport Cabinets	695.00
Laundry Tub	138.00
Cast Iron Sink	284.00
Brush Nickel Package	1,485.00
Double Sink Vanity	565.00
Corner Whirlpool Tub	2,400.00
Tri View Medicine Cabinets (x3)	360.00
Vanity Base Drawers (x3)	264.00
Seneca Ridge Oak Cabinets	2,137.00
Lazy Susan	379.00
Crown Molding Above Kit Cabinets (21')	141.00
Whirlpool Dishwasher (DU850SWP)	439.00
Suntube (x3)	1,590.00
Walk-Out Bay (LR)	1,327.00
Extra Window (Bdr. #3)	285.00
Front Entry Door (SS684HRRB)	1,117.00
Sidelight 1/2 Glass (SS692HRRB)	1,204.00
6' Vision French Sliding Patio (Bdr. #1)	939.00
6' Vision French Sliding Patio (DR)	615.00

Total With Options Shown: \$152,737.00



Price Includes All Blueprints, Delivery, Crane Work, Water Heater, Finish Ready For Hookups, Lennox Furnace Installed, & Tax!



Variation...

Color Information
S. Wicker Siding, Almond Trim, Weathered Wood Shingles, Brown Shutters, White Baths, Divinity Carpet, 91082 Vinyls, Nutmegl Oak Trim & Doors, Visions Tan Sgl-hung Windows, White DW & Rangehood, White Kitchen Sink, Nat. Canvas Countertop, Black FP Front

Variation Base Price.....	\$121,454.00
With the most Popular Options:	
6' Patio Doors.....	481.00
Utility Area w/Cabinets.....	695.00
Extra Full Bath.....	1,839.00
Interior French Doors w/glass.....	534.00
Central Air.....	2,140.00
Variation Total w/Options:...	\$127,143.00