

Base Price: \$94,314.00

This Home Displays The Following Options:

* 7 1/2' Roof Rise (6/12Slope)	2,728.00
Hip Roof (Both Ends)	3,618.00
Large Gable	1,074.00
Extra Gable Detail	193.00
1' Bump-Out Of Small Window (Bath #2)	464.00
Upgrade Carpet (Gorham)	761.00
Laminate Tile (Utility, Hall, Foyer)	836.00
Vaulted Ceilings (LR, DR, Kitchen)	1,261.00
Gas Fireplace	3,159.00
Oak Trim & Doors	1,150.00
Upgrade 6 Panel Oak Doors (x12)	2,340.00
Interior French Doors w/Glass	534.00
Paddle Fan Light (LR)	189.00
Box w/Pull Tag Wire (x4)	52.00
Extra 3/4 Bath	1,839.00
Utility Hook-Up w/Northport Cabinets	695.00
Rubbed Bronze Package	1,485.00
Corner Whirlpool	2,400.00
Double Sink Vanity	565.00
Vanity Base Drawers (x3)	264.00
Shower Door (Bath #2)	160.00
Tri View Medicine Cabinet (x2)	240.00
Vanity Top Upgrade (Cultured Granite 10')	550.00
Sutton Cliff Hickory Cabinets	4,069.00
8' Extra Base Cabinets	1,904.00
5.75' Extra Wall Cabinets	1,121.00
Crown Molding Above Kit Cabinets (28')	188.00
5' Mullion Glass Door Wall Cabinets	325.00
Base Drawer (BD3-24)	56.00
Cutting Board Kit (18")	166.00
Base Waste Top Mount Kit (18")	186.00
Tray Divider Roll Out (12")	129.00
Suntube (x2)	1,060.00
Peachtree Windows	1,200.00
Extra Windows (Bdr. 1, 2)	1,064.00
6' Citadel French Slider (Bdr. 1)	1,958.00
Upgrade Front Entry Door (SS684HRRB)	1,117.00
Sidelight Stained (SS692HRRB)	1,204.00
Interior/Exterior Door Lever Handles	243.00

Home Total w/Options \$136,861.00

14 x 18 SR w/Gable Base Price \$16,331.00

Vaulted Ceiling	428.00
Upgrade Carpet (Gorham)	211.00
Paddle Fan/Light	151.00
6' Citadel French Slider	1,958.00
Credit 32" Door	-240.00

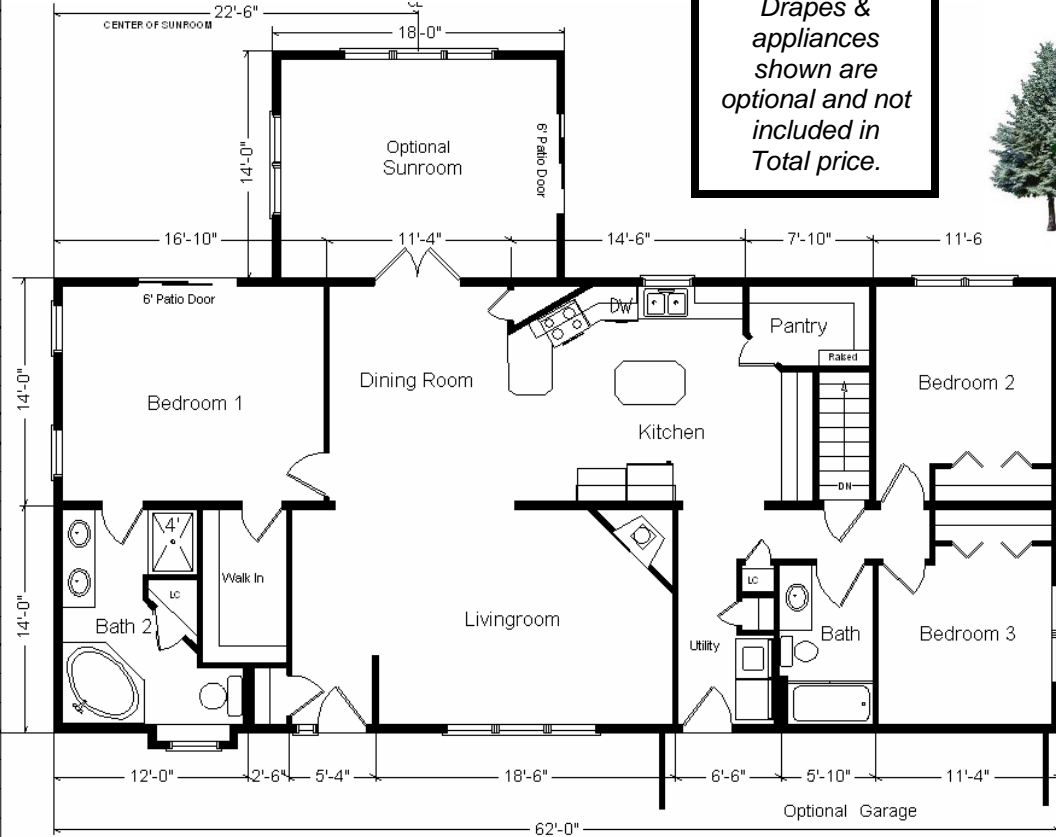
Sunroom Total \$18,839.00

Total With Options Shown: \$155,700.00

Design Homes, Inc.

Feb. 2009

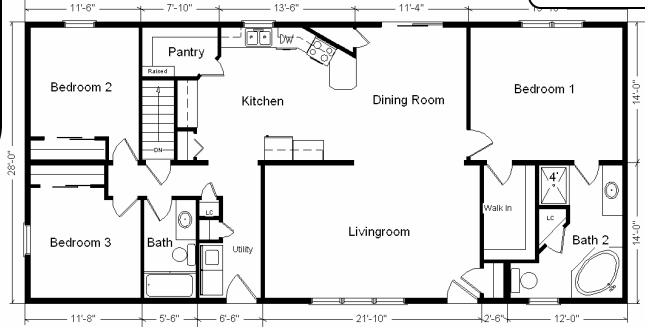
**Green Bay, WI
(#9288 -8-4)**



Drapes & appliances shown are optional and not included in Total price.

Optional Garage
DHI 24 X 24 w/6/12 Slope Roof
\$12,290.00
mileage charges may apply

28 x 60 Variation...



28x60 Base Price:.....	\$ 92,064.00
With the most Popular Options:	
Whirlpool Dishwasher.....	439.00
Utility Hook-ups.....	395.00
6' Patio Doors.....	481.00
3/4 Bath.....	1,839.00
Corner Soaker Tub.....	1,300.00
Variation Total w/Options:..	\$96,518.00

Model #3
28x62 Ranch w/SR 1,988 sq. ft.



Cultured Stone Facade "By Others"

Color Information
Granite Gray Siding, White Trim, Black Shingles, Black Shutters, White Baths, Toffee Vanities, Stonedust Carpet, 91082 Vinyls, Nutmeg Oak Trim & Doors, SS Dishwasher & Microwave, White Dbl-hung Windows, Sage Coral Countertop, Cabos Cream Laminate, Black FP Front

Price Includes All Blueprints, Delivery, Crane Work, Water Heater, Finish Ready For Hookups, Lennox Furnace Installed, & Tax!