

Model #8

28x44 Ranch 1,232 sq. ft.

Design Homes, Inc.

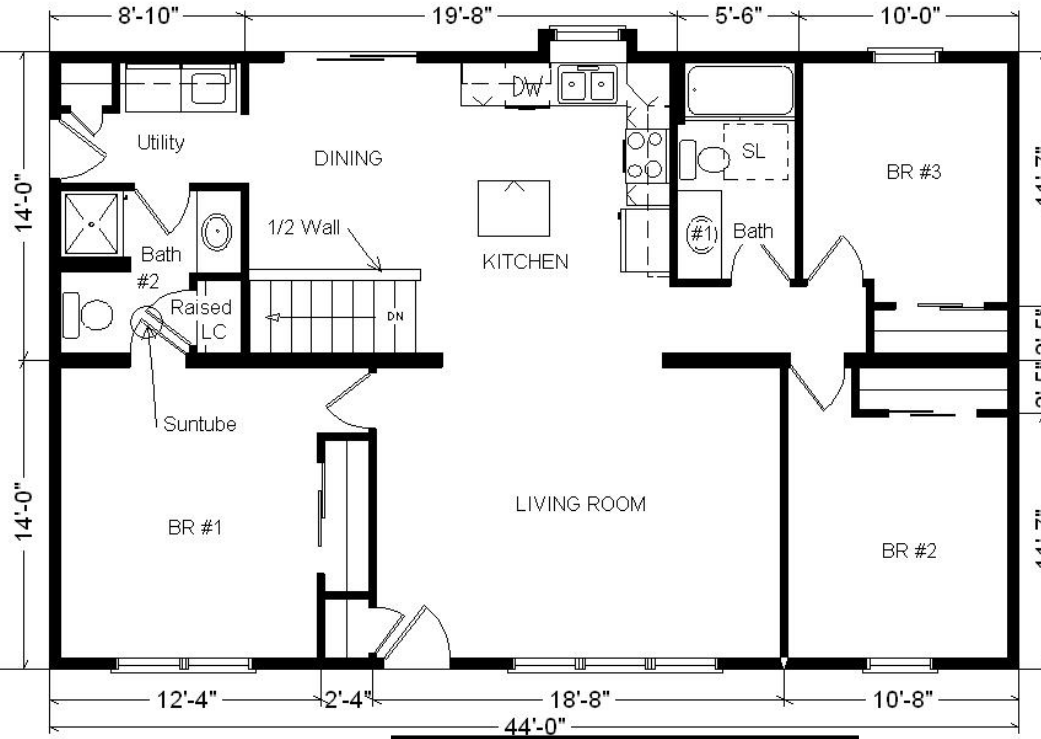
Fond du Lac, WI
 (#9242 -8-6)

Feb. 2009

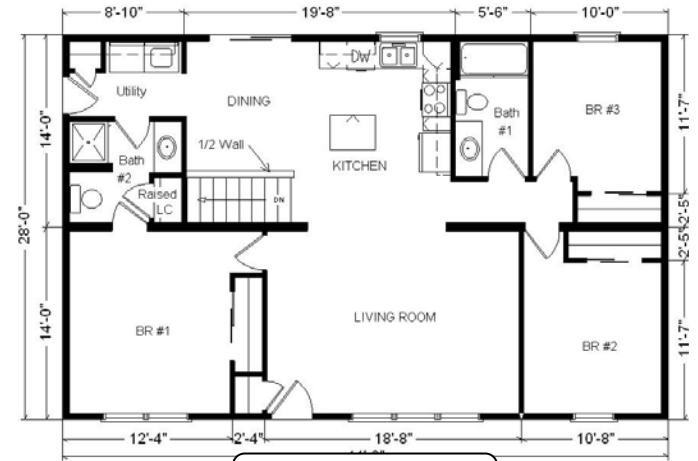


Base Price:	\$74,067.00
This Home Displays The Following Options:	
5/12 Slope	1,452.00
6/12 Gable w/Detail	1,618.00
1' Bump-Out Of Small Window (Kitchen)	464.00
Double 6" Clapboard Siding	1,913.00
Carpet Upgrade (Gorham)	608.00
Wood Laminate (Foyer)	95.00
Vaulted Ceilings (Kitchen,DR,LR)	857.00
Tv/Phone Box	13.00
Extra 3/4 Bath	1,839.00
Cast Iron Sink	284.00
Utility w/Chadwood Cabinets	695.00
Oil Rubbed Bronze Package	1,120.00
Shower Door (Bath#2)	160.00
Vanity Tops (Cultured Granite 7.5')	413.00
Whirlpool Dishwasher (DU850SWP)	439.00
Velux Skylight (QFS302)	683.00
Suntube	530.00
Upgrade Front Entry Door (S684FLR)	262.00
6' Peachtree Citadel Sliding Patio (DR)	1,634.00

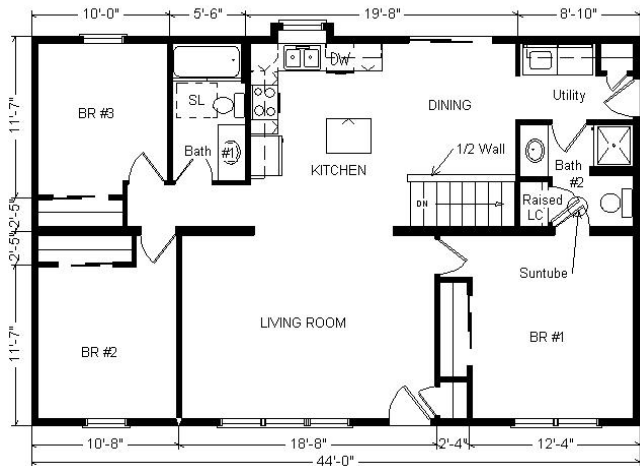
Total With Options Shown: \$89,146.00



Color Information
 Cyprus Dbl. 6" Clapboard Siding, White Trim, Black Shingles, White Shutters, White Baths, G41 Vanities, Camel Carpet, 91080 Vinyls, Bisque Sink, Standard Trim & Doors, White Dishwasher & Rangehood, White Sgl-hung Vinyl Windows, Sand Nebula Countertop



Variation...



Reverse Plan
 w/Optional
 Garage Shown

Buy Display Model For:
\$82,906.00!
 (discounted 6,240.00!)

Price Includes All Blueprints, Delivery, Crane Work, Water Heater, Finish Ready For Hookups, Lennox Furnace Installed, & Tax!

Base Price:	\$ 74,067.00
With the most Popular Options:	
Whirlpool Dishwasher	439.00
Utility Hook-ups	395.00
6' Patio Doors	481.00
¾ Bath	1,839.00
Central Air	2,140.00
Variation Total w/Options:	\$79,361.00