

Model #5

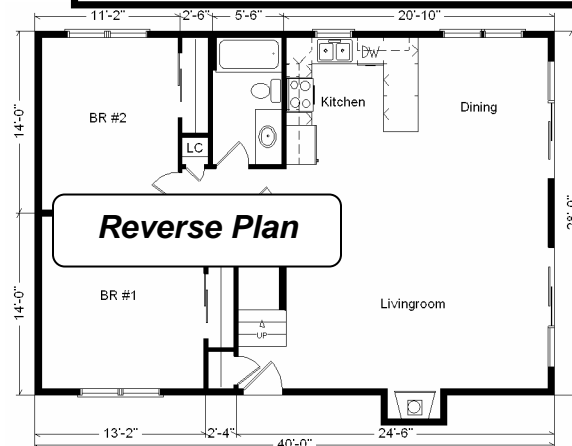
28x40 Loft 1,610 sq. ft.

Base Price:	\$84,138.00
This Home Displays The Following Options:	
Outside Chimney Chase	669.00
Vinyl Log Siding	5,444.00
Laminate Flooring (Kitchen, DR.)	925.00
Carpet Upgrade (Gorham)	616.00
Gas Fireplace	3,159.00
Spring Valley Medium Cabinets	1,280.00
* GE Dishwasher	421.00
* 2-9' Crestline Trapezoid Windows	5,402.00
* Crestline Window Upgrade (Unfinished)	850.00
* 9' Crestline Patio Slider (DR)	2,083.00
* 9' Crestline Patio Slider (LR)	487.00
Exterior Door Credit	-240.00
Shutter Credit	-56.00

Total With Options Shown: \$105,178.00

* Item/Brand Name No Longer Available

**Buy Display Model For:
\$92,557.00!
(discounted 12,621.00!)**



Price Includes All Blueprints, Delivery, Crane Work, Water Heater, Finish Ready For Hookups, Lennox Furnace Installed, & Tax!

Design Homes, Inc.

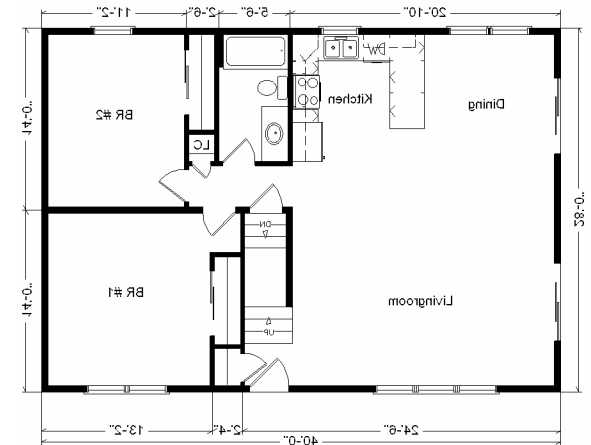
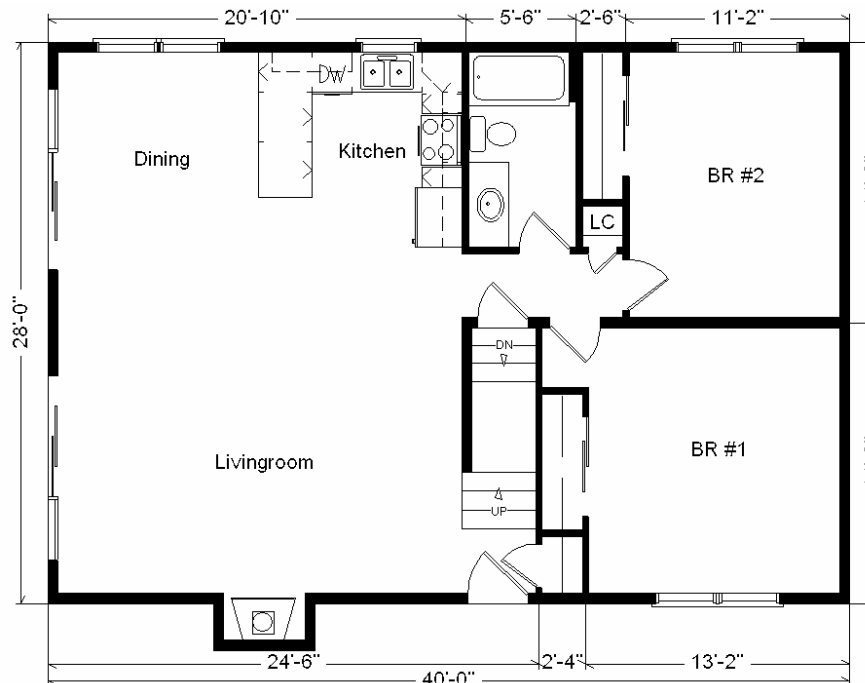
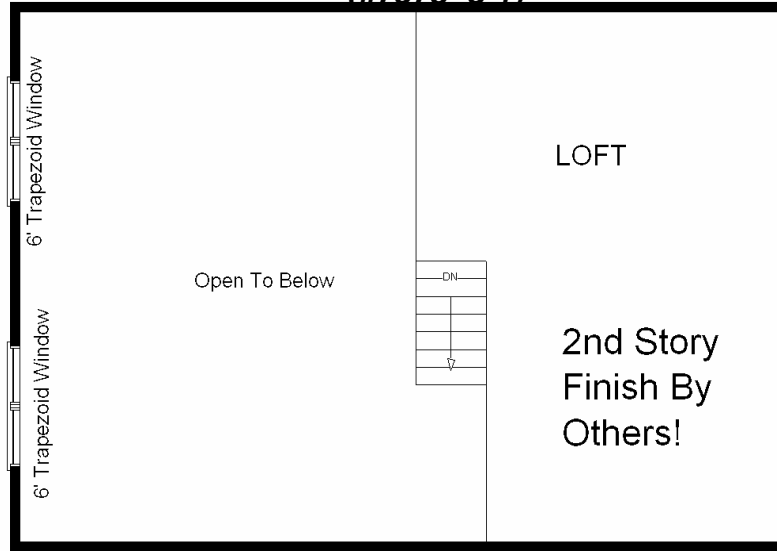
**Eldridge, IA
(#7578 -3-1)**

Feb. 2009



Color Information

W. Cedar Vinyl Log Siding, Green Trim, Green Shingles, Bisque Bath, Stonedust Carpet, 91082 Vinyls, 2513 Laminate, SS Sink, Standard Trim & Doors, Bisque Dishwasher & Rangehood, Green Dbl-hung Windows, Beige FP Front, Almond Woodsong Countertop



Variation...

Base Price:	\$ 84,138.00
With the most Popular Options:	
Whirlpool Dishwasher.....	439.00
2-6' Patio Doors.....	1,610.00
2-6' Trapezoid Windows.....	3,478.00
Central Air.....	2,140.00
Variation Total w/Options:..	\$91,805.00