

Model #2

28x50 Ranch 1,418 sq. ft.

Design Homes, Inc.

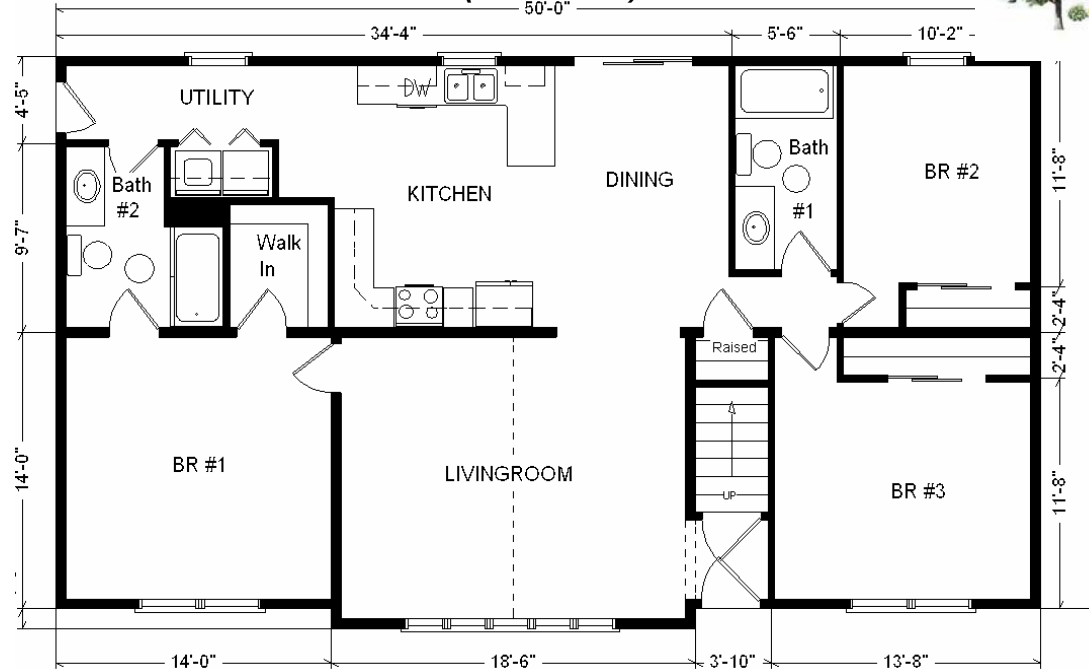
Eldridge, IA

(#9237 -8-6)



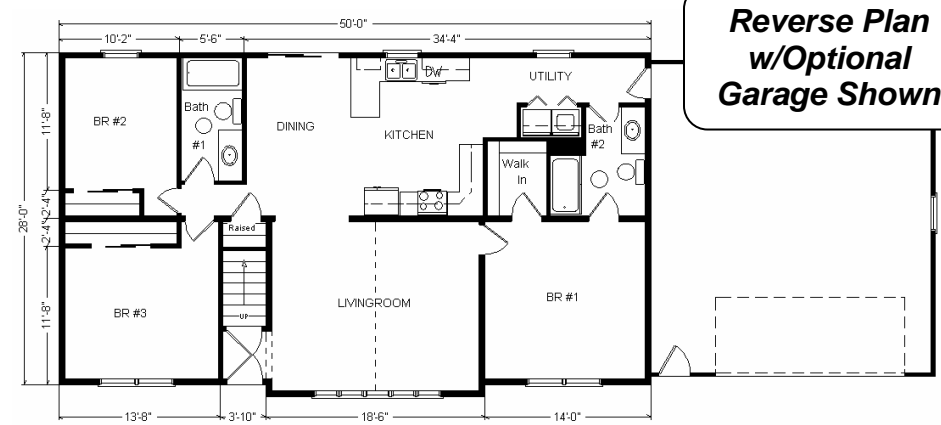
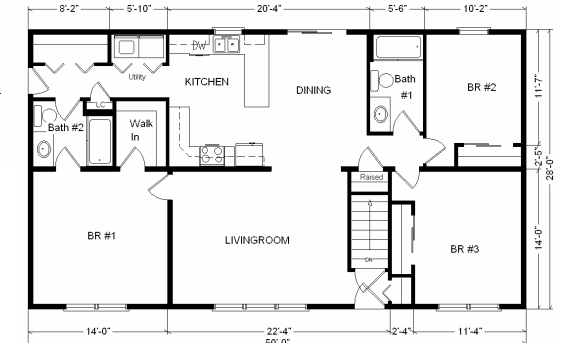
Base Price:	\$80,815.00
This Home Displays The Following Options:	
6/12 Roof Slope	2,200.00
Rev. Vault Gable-1' Bump-Out	2,674.00
Carpet Upgrade (Gorham)	697.00
Vaulted Ceiling (Kitchen, DR)	464.00
Oak Trim & Doors	1,150.00
Tv/Phone Box	13.00
Wire For Paddle Fan w/Light	36.00
Wire For Electric Range	92.00
Utility w/Northport Cabinets	695.00
Extra Full Bath	1,839.00
Cast Iron Sink (K5942-4-0)	284.00
Pull-out Faucet w/Sprayer (K15160-CP)	187.00
Tri View Medicine Cabinets (x2)	240.00
Shower Door (Bath #2)	160.00
Upgrade Vanity Tops(Cultured Granite 8')	440.00
Richwood Lite Cabinets	1,404.00
Lazy Susan	315.00
Space Microwave (MH117OXST)	249.00
Whirlpool Dishwasher (DU850SWP)	439.00
Suntube (x2)	1,060.00
4' Radius Window (LR)	1,024.00
Peachtree Wood Windows	1,200.00
5 Section Casements Window (LR)	797.00
Paint One Side Of Exterior Door	122.00
6' Builder Series French Slider (DR)	1,464.00

Total With Options Shown: \$100,060.00



Price Includes All Blueprints, Delivery, Crane Work, Water Heater, Finish Ready For Hookups, Lennox Furnace Installed, & Tax!

Color Information
 Desert Tan Siding, White Trim,
 H. Blend Shingles,
 Wine Shutters, Gray Baths, Stonedust
 Carpet, 91056 Vinyls, Bisque Sink &
 Dishwasher, Nutmeg Oak Trim & Doors,
 White Dbl-hung Windows,
 Olive Organix Countertop



Reverse Plan w/Optional Garage Shown

Variation...

Base Price:	\$ 80,815.00
With the most Popular Options:	
Whirlpool Dishwasher	439.00
6' Patio Door	481.00
Extra Full Bath	1,839.00
Utility Area w/Cabinets	695.00
Central Air	2,140.00
Variation Total w/Options:	\$86,409.00

Feb. 2009