

# Model #3

28x44 Ranch 1,232 sq. ft.

# Design Homes, Inc.

WI Dells, WI  
(#6799 -1-3)

Feb. 2009



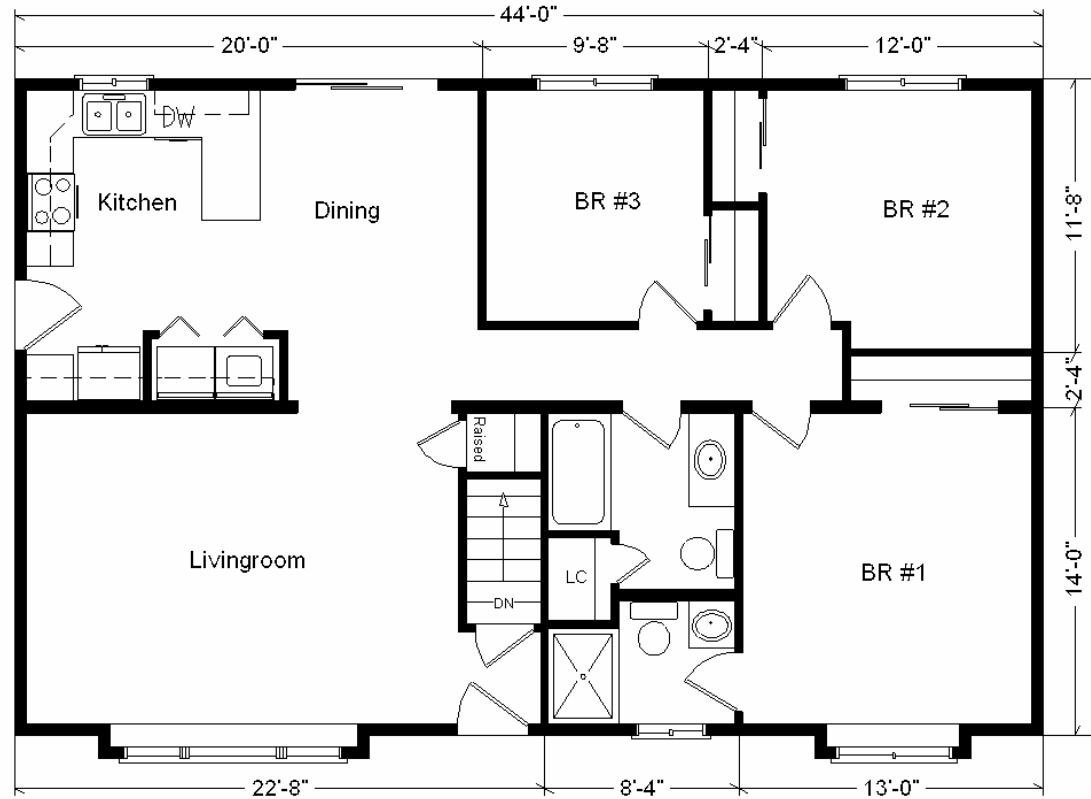
**Base Price: \$74,067.00**

**This Home Displays The Following Options:**

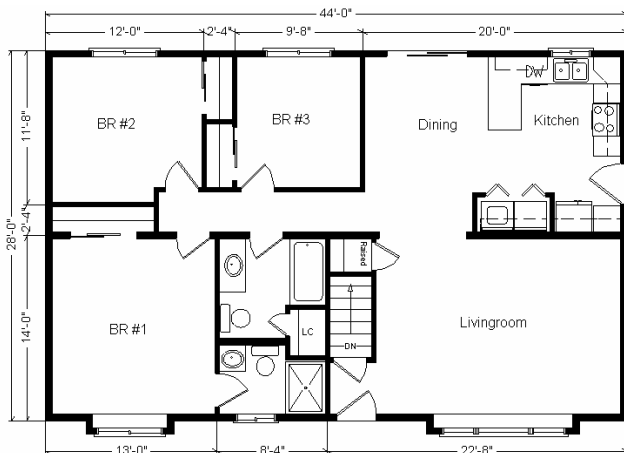
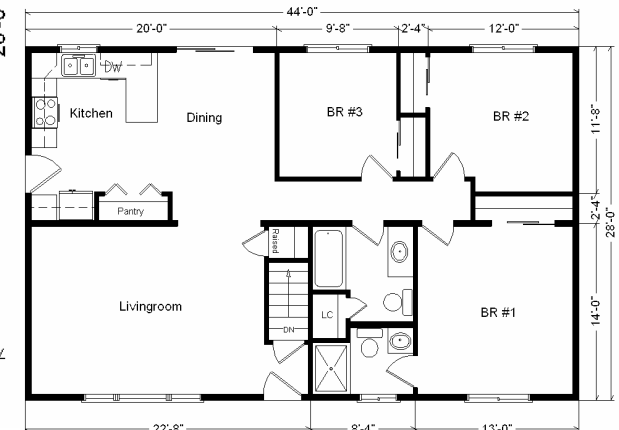
* 6' Roof Rise(4.68/12 Slope)	1,452.00
Large Gable(x2)	2,148.00
1' Bump-Out(Bdr #1 Window)	764.00
1' Bump-Out(LR Window)	764.00
Upgrade Carpet(WL)	923.00
Laminate Flooring(Foyer, Kitchen, DR)	982.00
Vaulted Ceilings(Kitchen, DR, LR)	880.00
Oak Trim & Doors	950.00
Tv/Phone Box(x3)	39.00
Utility Hook-Up w/Northport Cabinets	695.00
Extra 3/4 Bath	1,839.00
Tri View Oak Medicine Cabinets(x2)	240.00
Spring Valley Medium Cabinets	1,280.00
10" Suntube	530.00
* Kolbe Double Sliding Windows	500.00
* 6' Peachtree French Slider(DR-Prado)	610.00

**Total With Options Shown: \$88,663.00**

\* Item/Brand Name No Longer Available



**Color Information**  
Sterling Grey Siding, White Trim, Black Shingles, White Shutters, White Baths, Mortar Carpet, 91056 Vinyls, Nutmeg Oak Trim & Doors, SS Sink, White Dishwasher, 2513 Laminate, Almond Woodsong Countertop



**Reverse Plan  
w/Optional  
Garage Shown**

*Drapes & appliances shown are optional and not included in Total price.*

**Price Includes All Blueprints, Delivery, Crane Work, Water Heater, Finish Ready For Hookups, Lennox Furnace Installed, & Tax!**

**Variation...**

<b>Base Price:</b> .....	<b>\$ 74,067.00</b>
<b>With the most Popular Options:</b>	
Whirlpool Dishwasher.....	439.00
6' Patio Doors.....	481.00
¾ Bath.....	1,839.00
Central Air.....	2,140.00
<b>Variation Total w/Options:..</b>	<b>\$78,966.00</b>