

# Model #6

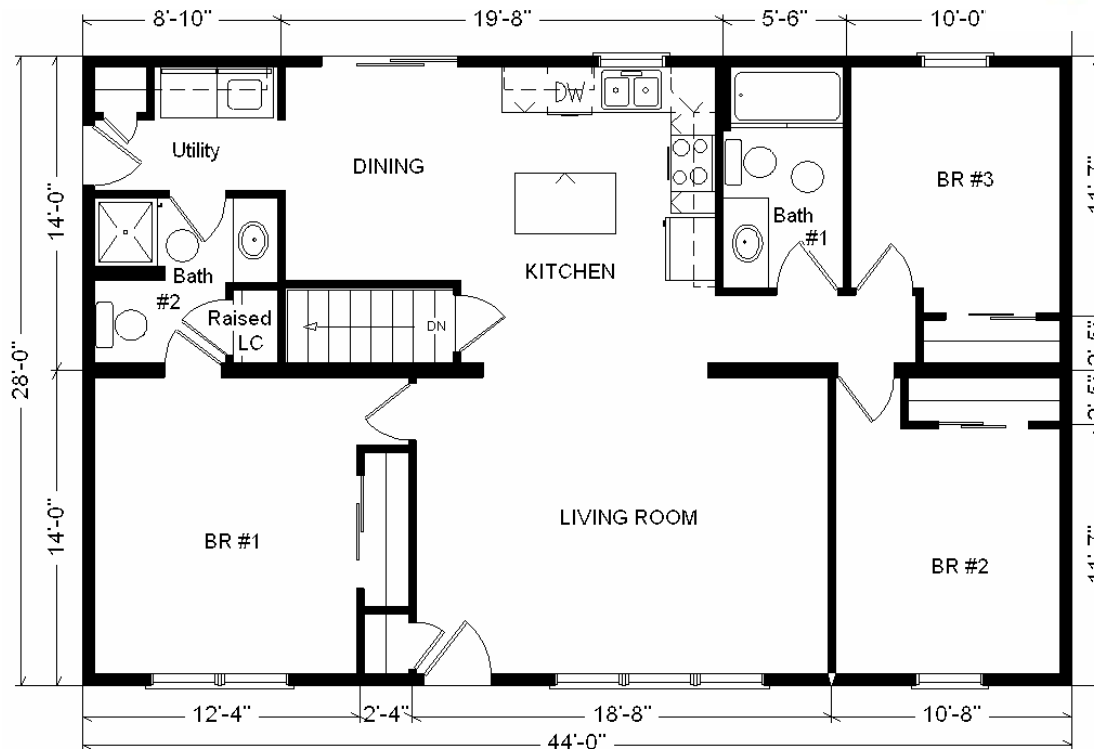
28x44 Ranch 1,232 sq. ft.

# Design Homes, Inc.

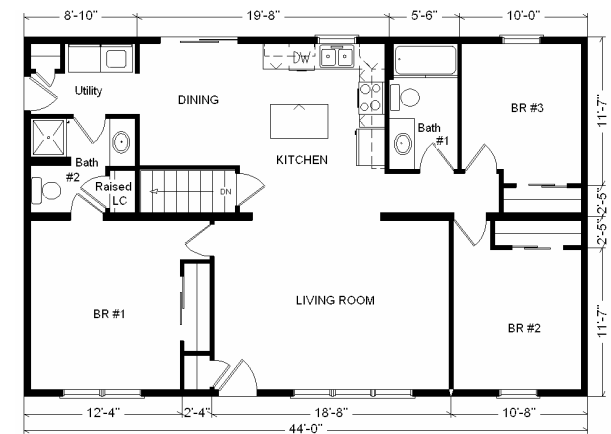
Burlington, IA  
(#9361 -8-6)



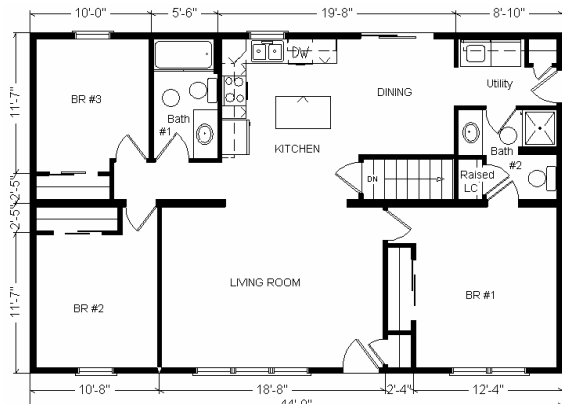
<b>Base Price:</b>	<b>\$74,067.00</b>
<b>This Home Displays The Following Options:</b>	
5/12 Slope	1,452.00
Large Gable	1,074.00
Upgrade Carpet (WL)	889.00
Vaulted Ceiling (Kitchen, DR, LR)	880.00
Oak Trim & Doors	950.00
Tv/Phone Box	13.00
Cast Iron Sink	284.00
Extra 3/4 Bath	1,839.00
Utility w/Northport Cabinets	695.00
Shower Door	160.00
Tri View Medicine Cabinets (x2)	240.00
Spring Valley Cabinets	1,280.00
Whirlpool Dishwasher (DU850SWP)	439.00
Suntube (x2)	1,060.00
6' Vision French Sliding Patio Door (DR)	615.00
<b>Total With Options Shown:</b>	<b>\$85,937.00</b>



**Color Information**  
 Granite Gray Siding White Trim,  
 Black Shingles, Black Shutters, White  
 Baths, Parchment Carpet, 91066 Vinyls,  
 Bisque Sink, Nutmeg Oak Trim & Doors,  
 Bisque Dishwasher, White S-hung  
 Windows, Beige Pampas Countertop



Feb. 2009



**Reverse Plan  
w/Optional  
Garage Shown**

**Price Includes All Blueprints,  
Delivery, Crane Work,  
Water Heater,  
Finish Ready For Hookups,  
Lennox Furnace Installed, & Tax!**

**Variation...**

<b>Base Price:</b> .....	<b>\$ 74,067.00</b>
<b>With the most Popular Options:</b>	
Whirlpool Dishwasher.....	439.00
Utility Hook-ups.....	395.00
6' Patio Doors.....	481.00
¾ Bath.....	1,839.00
Central Air.....	2,140.00
<b>Variation Total w/Options:..</b>	<b>\$79,361.00</b>