

Model #3

28x42 Cape Cod 1,849 sq. ft.

Design Homes, Inc.

Ames, IA
(#8852 -6-1)

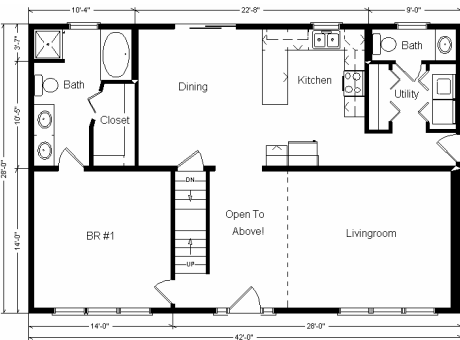
Feb. 2009



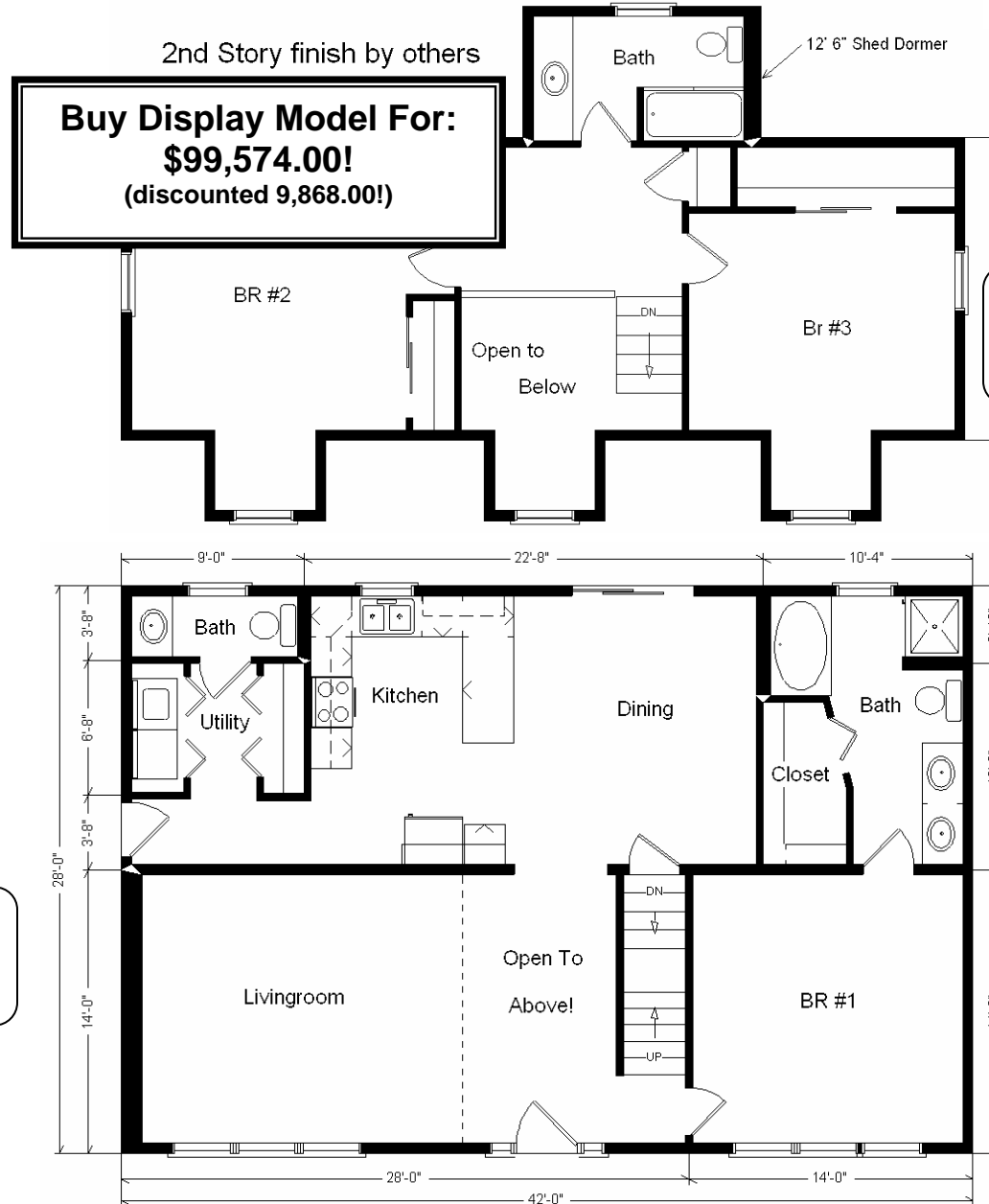
Base Price:	\$86,951.00
This Home Displays The Following Options:	
12' Shed Dormer	3,973.00
Extra 6' Gable Dormer	3,711.00
Upgrade Siding (Mastic-Quest)	2,628.00
Upgrade Carpet (Divinity)	880.00
Laminate Tile (Foyer)	178.00
Oak Doors & Trim	950.00
TV Phone Box	13.00
Extra 1/2 Bath	1,035.00
Utility Area w/Northport Cabinets	695.00
Double Sink Vanity	565.00
Shower Door	160.00
Tri View Oak Medicine Cabinets (x3)	360.00
5' Whirlpool Tub	1,900.00
Richwood Lite Cabinets	1,404.00
Whirlpool Dishwasher (DU850SWP)	439.00
* Kolbe Double Hung Windows	500.00
* Extra Window (Bdr #1)	325.00
Window Grilles (GIA x15)	585.00
Front Entry Door (S684FLR)	262.00
Sidelight 1/2 Glass x2 (S692FLR)	1,318.00
* 6' Peachtree Sliding Patio Door (DR)	610.00

Total With Options Shown: \$109,442.00

* Item/Brand Name No Longer Available



**Reverse Plan
w/Optional
Garage Shown**

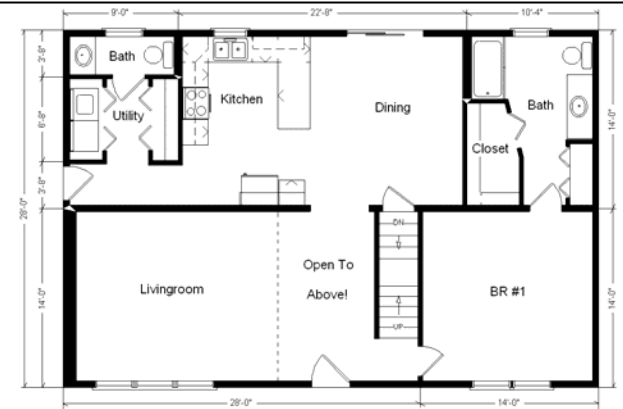


**Buy Display Model For:
\$99,574.00!
(discounted 9,868.00!)**

2nd Story finish by others

Color Information
Woodland Green Siding, Clay Trim, Black Shingles,
Black Shutters, White Baths, Divinity Carpet, Nutmeg
Oak Trim & Doors, SS Sink, 91057 Vinyl,
Beige Kolbe Doublehung Windows, Black Dishwasher,
Sage Coral Countertop, Richwood Lite Cabinets

**Price Includes All Blueprints, Delivery, Crane
Work, Water Heater, Finish Ready For Hookups,
Lennox Furnace Installed, & Tax!**



Variation...

Base Price:	\$ 86,951.00
With the most Popular Options:	
Whirlpool Dishwasher.....	439.00
Utility Hook-ups.....	395.00
6' Patio Door.....	481.00
1/2 Bath.....	1,035.00
Variation Total w/Options:..	\$89,301.00