

Model #6

46' Rustic Ranch

1,104 sq. ft.

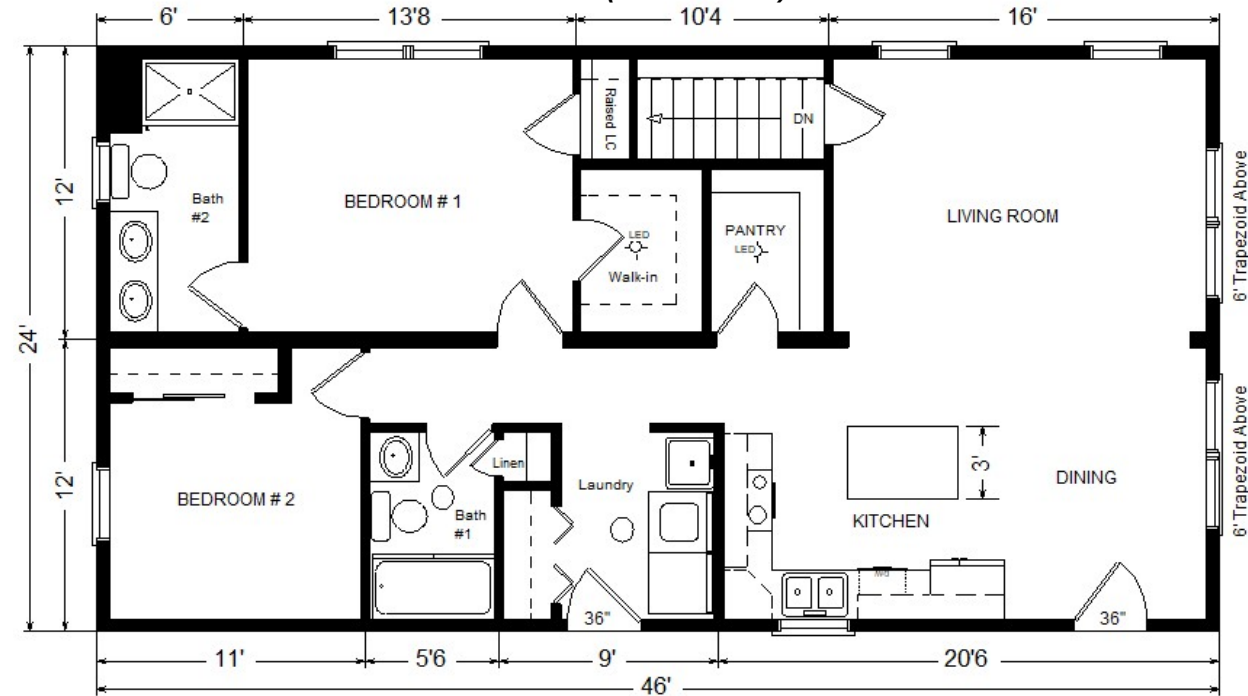
Base Price:	\$120,027.00
This Home Displays The Following Options:	
Premium Color Vinyl Siding	690.00
Window/Door Lineals	920.00
** 3 Extra Pella Windows	845.00
Vaulted Ceilings w/Parallel Truss	1,883.00
Paddle Fan/Light (LR)	220.00
Upgrade RV Mowhawk Rewood	418.00
Extra 3/4 Bath	2,450.00
Double Vanity (Bath #2)	725.00
Vanity Drawer Bases (Bath #2)	264.00
Recessed Medicine Cabinets (x2)	140.00
ORB Bath Hardware Packages	920.00
Cultured Granite Vanity Tops	514.00
Shower Doors (Bath #2)	575.00
Wire for Future DW	75.00
Wire for Future Microwave	75.00
Select Kitchen Cabinet Option	680.00
Crown Molding (18')	360.00
36" Wide Island Top	39.00
Vent Rangehood to Exterior	200.00
Laundry Area Hookups	428.00
Laundry Tub	249.00
2 Suntubes	1,590.00
2 6' Trapezoid Windows	2,940.00
Upgrade 2nd Exterior Door to 36"	100.00
2 Painted Exterior Doors	458.00

Total With Options Shown: \$137,785.00

** Discontinued Pella Encompass Series

Design Homes, Inc.

Urbana, IA
 (#11027-1-6)



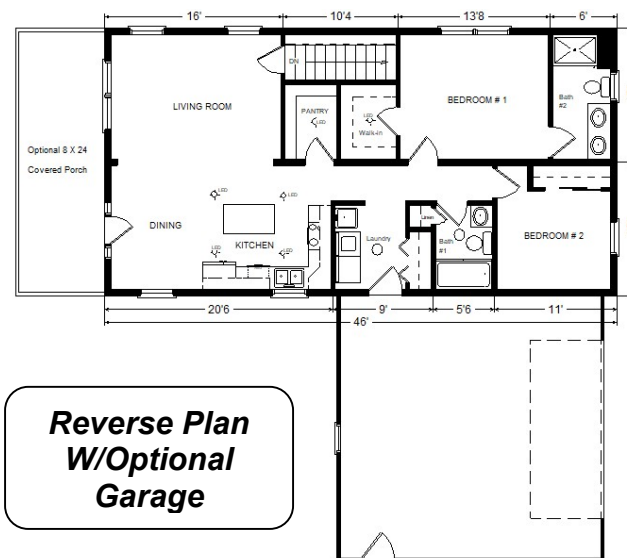
Price Includes: Crane Setting, All Blueprints, R55 Ceilings, R21 Exterior Walls, Kohler Plumbing, Pella Windows, 200 Amp Service, All Applicable Tax and Much More!!

***See Sales Rep For Applicable Delivery Fees**

MN #BC146710

March 2025

Prices are Subject to Change



**Reverse Plan
 W/Optional
 Garage**

Color Information

Spruce Siding, Clay Trim, Heatherblend Roof, Clay Lineals, Pecan Oak Trim & Doors, Oak Wheat Cabinetry, Bisque Baths, #780 Vanity Tops, Bark Carpet, CDL74-01 RV Revwood, Fossil Pella Sgl-hung Windows, Butterum Granite Kit. Countertops, Rubbed Bronze Hardware,