

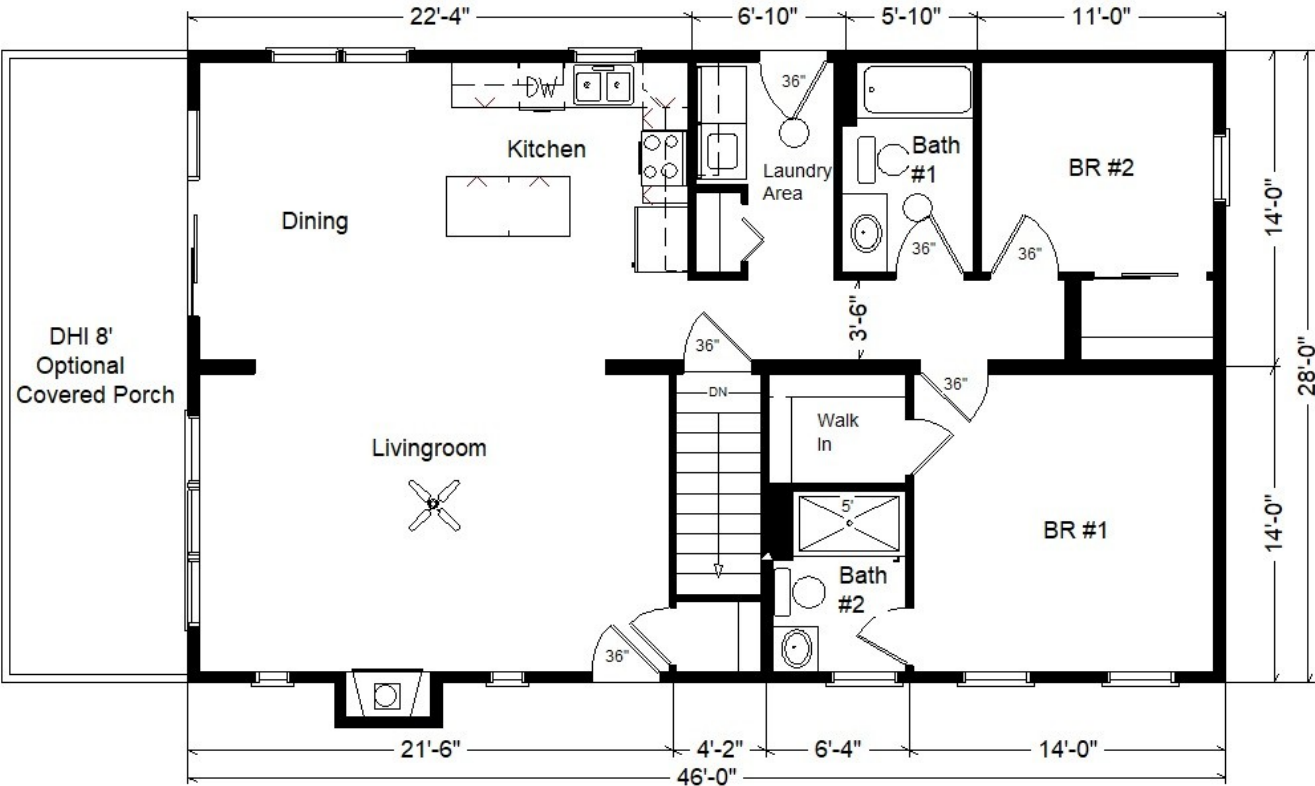
Model #2
28x46 Ranch
1,288 sq. ft.
w/Optional 8' Porch

Design Homes, Inc.

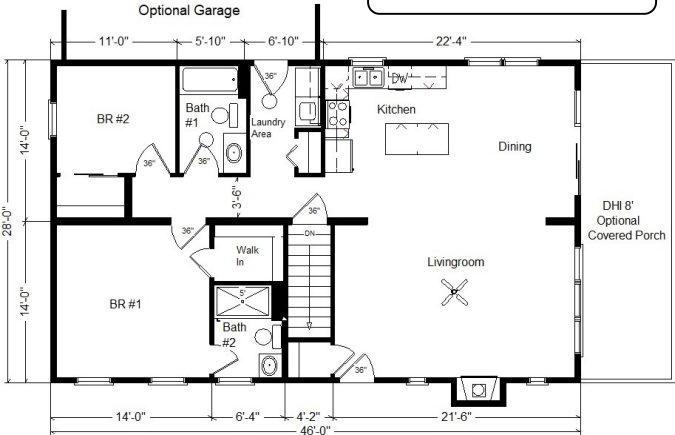
Urbana, IA
(#10928 -9-6)



MN #BC146710



Reverse Plan



Prices are Subject
to Change

March2 2025

**Price Includes: Crane
Setting, All Blueprints,
R55 Ceilings, R21
Exterior Walls, Kohler
Plumbing, Pella
Windows, 200 Amp
Service, All Applicable
Tax and Much More!!**

***See Sales Rep For Any
Applicable Delivery Fees**

Base Price:	\$143,354.00
This Home Displays The Following Options:	
6/12 Roof Pitch	2,646.00
8' Covered Porch	18,367.00
Premium Trex Porch Decking	1,682.00
Premium Color Vinyl Siding	771.00
Window and Door Lineals	1,761.00
Gas Fireplace	8,220.00
Outside Chimney Chase	1,350.00
Vaulted Ceilings (LR,K, Din, Porch)	1,324.00
36" Interior Doors Where Possible	400.00
Upgrade 2nd Exterior Door to 36"	100.00
DHI Paddle Fan/Light	220.00
Wire for Electric Range	175.00
Wire for Future DW	75.00
Wire for Future Microwave	75.00
Laundry Area w/Cabinets	750.00
Extra 3/4 Bath	2,450.00
Upgrade 5' Shower	250.00
Shower Door (Bath #2)	575.00
ORB Bath Hardware Package	795.00
Cult. Granite Vanity Tops	404.00
Vanity Drawer Base (Bath #1)	132.00
Swan Quartz Kit. Sink	549.00
Kohler Pull-down Kit. Faucet	295.00
Benton Birch Burlap Cabs (disc.)	3,430.00
Select Cabinet Option in Kitchen	680.00
36" Wide Kit. Island Top	102.00
Subway Tile Kit. Backsplash	595.00
Crown Molding in Kitchen (19")	380.00
Suntube (x2)	1,590.00
Pella Casements (LR Fireplace)	1,524.00
9' Pella 250 Patio Door	5,423.00
Paint One Side Exterior Doors	458.00
Total With Options Shown:	\$200,902.00