

# Model #5

28x66 4-sec Ranch 1,848 sq. ft.

\*All 4-Section Ranch Orders Are Subject To Approval

Design Homes, Inc.



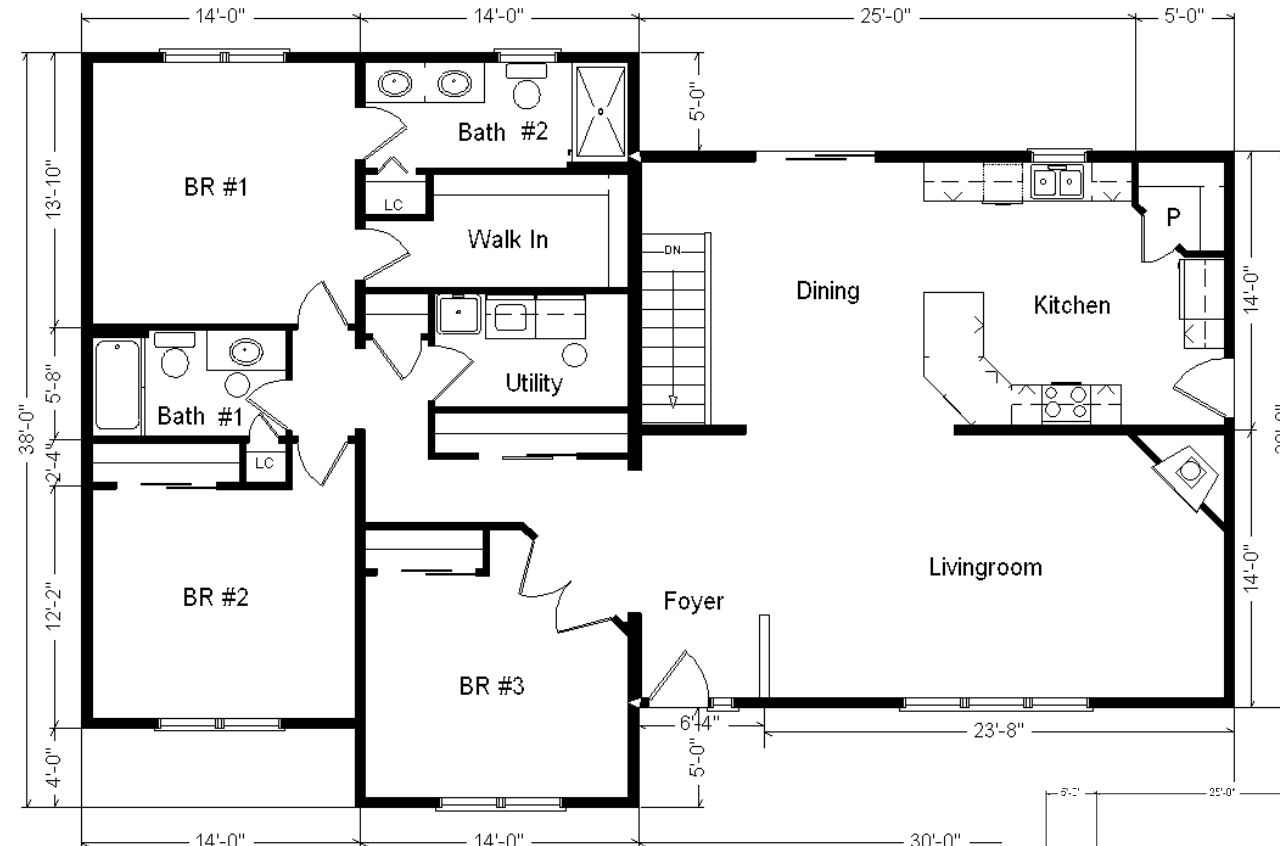
Base Price:	\$206,076.00
This Home Displays The Following Options:	
6/12 Roof Slope	3,234.00
Peachtree Windows (disc.)	4,840.00
Upgrade Carpet (Gorham)	883.00
Gas Fireplace	8,220.00
Vaulted Ceilings (LR, DR, Kit)	1,806.00
Oak Rail & Spindles	1,950.00
Interior French Doors w/Glass	1,550.00
Paddle Fan Light (x4)	754.00
Floor Receptacle (By Railing DR)	158.00
Wire For Electric Range	175.00
Wire for Future Microwave	75.00
Wire for Future DW	75.00
Extra Outlets (x2)	48.00
Elongated Toilet	62.00
Laundry Area w/Cabinets	750.00
Laundry Tub	249.00
Cold Water Faucet	38.00
Extra 3/4 Bath	2,450.00
Recessed Medicine Cabinet (x2)	140.00
Double Sink Vanity	725.00
5' Shower	250.00
Westbury Oak Cabinets (disc.)	2,858.00
APC Kitchen Cabinet Option	1,793.00
2' of Extra APC Base Cabinets	532.00
Custom Cabinets	475.00
Ceramic Tile Backsplash	595.00
Crown Molding (32')	640.00
36" Wide Counter Top (7')	60.00
Vent Rangehood to Exterior	200.00
Suntube (x2)	1,590.00
Painted Front Entry Door	229.00
Sidelight 1/2 Glass (S33)	1,315.00
6' Peachtree Patio Door (disc.)	1,850.00

Total With Options Shown: \$246,645.00

Appliances shown are optional and not included in Total price.

Prairie du Chien, WI  
(#9423 -9-4)

Prices are Subject to Change



## Color Information

S. Wicker Siding,  
Clay Trim,  
Heather Blend  
Shingles,  
Wineberry Shutters,  
White Baths, Clove  
Carpet, (?) Laminate  
Floor, 91082 Vinyls,  
SS Sink, Natural Oak  
Trim & Doors, Black  
Appliances, Peachtree  
Pebble Tan Dbl-hung  
Windows,  
Butterum Granite  
Countertop, Spring  
Valley Natural  
Cabinets, Black FP  
Front

Price Includes: Crane Setting, All Blueprints, R55  
Ceilings, R21 Exterior Walls, Kohler Plumbing,  
Pella Windows, 200 Amp Service, All Applicable  
Tax and Much More!!

\*See Sales Rep For Any Applicable Delivery Fees

March 2025

Reverse Plan

