

# Model #13

28x63 3-Piece Ranch  
1,764 sq. ft.

# Design Homes, Inc.



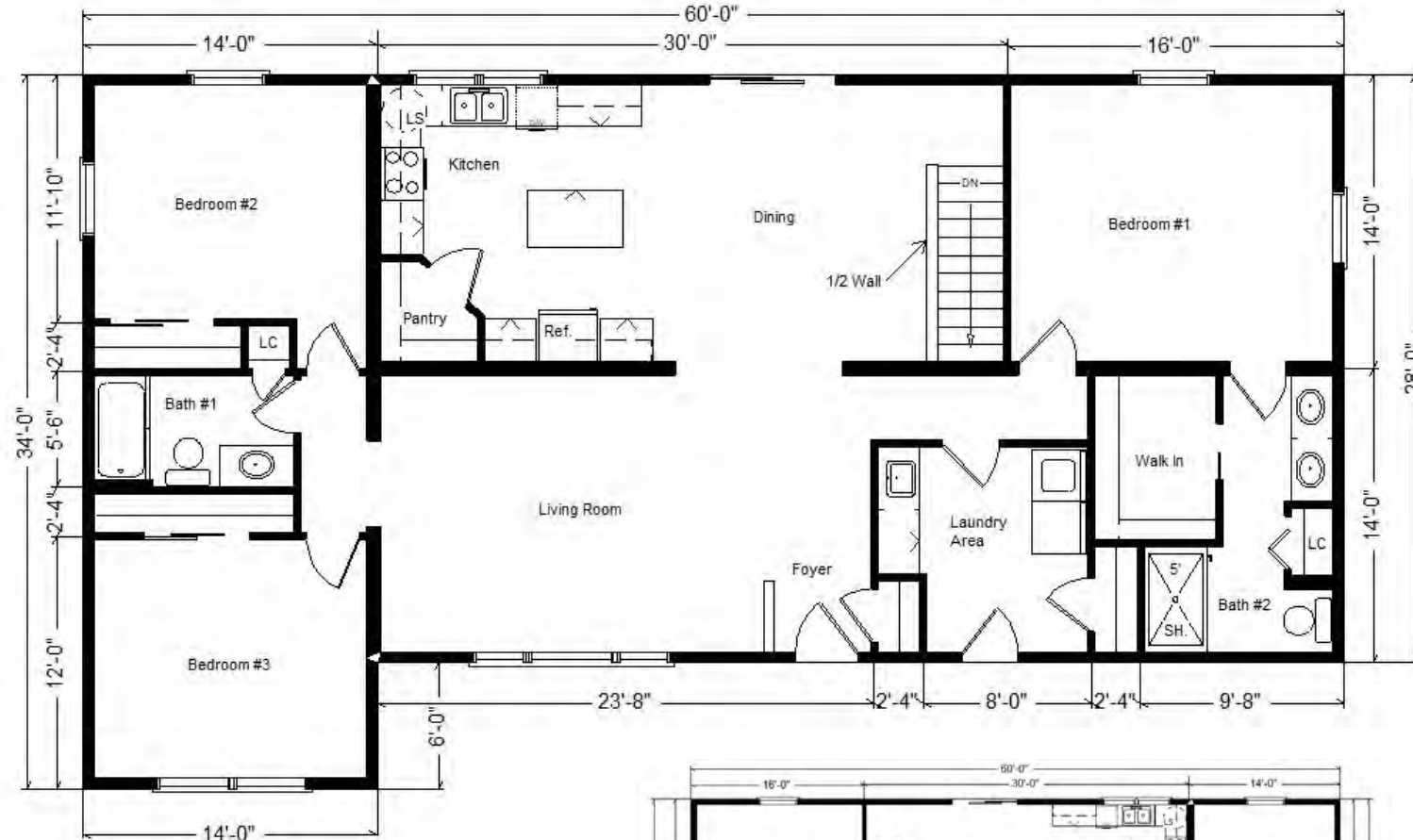
Fe25 2025

## Prairie du Chien, WI (#10936 -0- 6)

Prices are Subject  
to Change

<b>Base Price:</b>	<b>\$195,178.00</b>
<b>This Home Displays The Following Options:</b>	
6/12 Roof Slope	3,087.00
9' Walls	3,492.00
Window and Door Lineals	1,546.00
Pella 350 Series Windows (disc.)	7,708.00
350 Patio Door w/Shades (disc.)	4,701.00
Vaulted Ceilings (LR, Din & Kit.)	1,610.00
Wire for Electric Range	175.00
4 LED "can-look" Lights	260.00
Laundry Area Hook-ups	428.00
Laundry Sink w/6' of Benton Cabs.	1,591.00
Extra 3/4 Bath	2,450.00
Double Sink Vanity	725.00
Cultured Granite Vanity Tops	699.00
5' Shower Upgrade (Bath #2)	250.00
Vanity Drawer Bases (x3)	490.00
Rubbed Bronze Bath Package	920.00
Quartz Kitchen Countertops	7,638.00
Kohler Pull-down Kit. Faucet (BRZ)	295.00
Three Panel Oak Doors (x14)	3,570.00
Pocket Door (Bath #2)	390.00
Premium Trim Package	5,607.00
Benton Birch Cabinets (disc.)	3,430.00
APC Kitchen Cabinet Option	1,793.00
4' of Extra APC Base Cabinets	1,276.00
Roto Cabinet (SCR36)	527.00
Subway Tiled Backsplash (NA)	595.00
MT Crown Molding (24')	888.00
WP Microwave (WMH32519)	454.00
Vent Microwave to Exterior	200.00
WP Dishwasher (WDF520)	654.00
Frosted Pantry Door	869.00
Upgrade Front Door (SS866MNTP)	1,903.00
Painted Exterior Door (garage)	229.00

**Total With Options Shown: \$255,628.00**



**Color Information**  
Sterling Grey Siding, White Trim, Driftwood Shingles, White Lineals, Hazelnut Oak Trim & Doors, White Baths, Cappuccino #780 Vanity Tops, Angora Carpet, LX240 Vinyl in Baths/Laundry, CDL77-04W Revwood Floors, White Pella 350 Dbl-hung Windows, Black Kitchen Sink, Black DW and Microwave, Bavaria Quartz Kitchen Countertops, Oil Rubbed Bronze Hardware/Fixtures, Burlap Stained Cabinetry, Coffee Stained Front Door

MN #BC146710

**Price Includes: Crane Setting, All Blueprints, R55 Ceilings, R21 Exterior Walls, Kohler Plumbing, Pella Windows, 200 Amp Service, All Applicable Tax and Much More!!**

**\*See Sales Rep For Any Applicable Delivery Fees**

**Reverse Plan w/Optional Garage Shown**