

Model #3

28 x 54 Ranch

1,524 sq. ft.

Design Homes, Inc.
Fond du Lac, WI
(#11268-3-6)

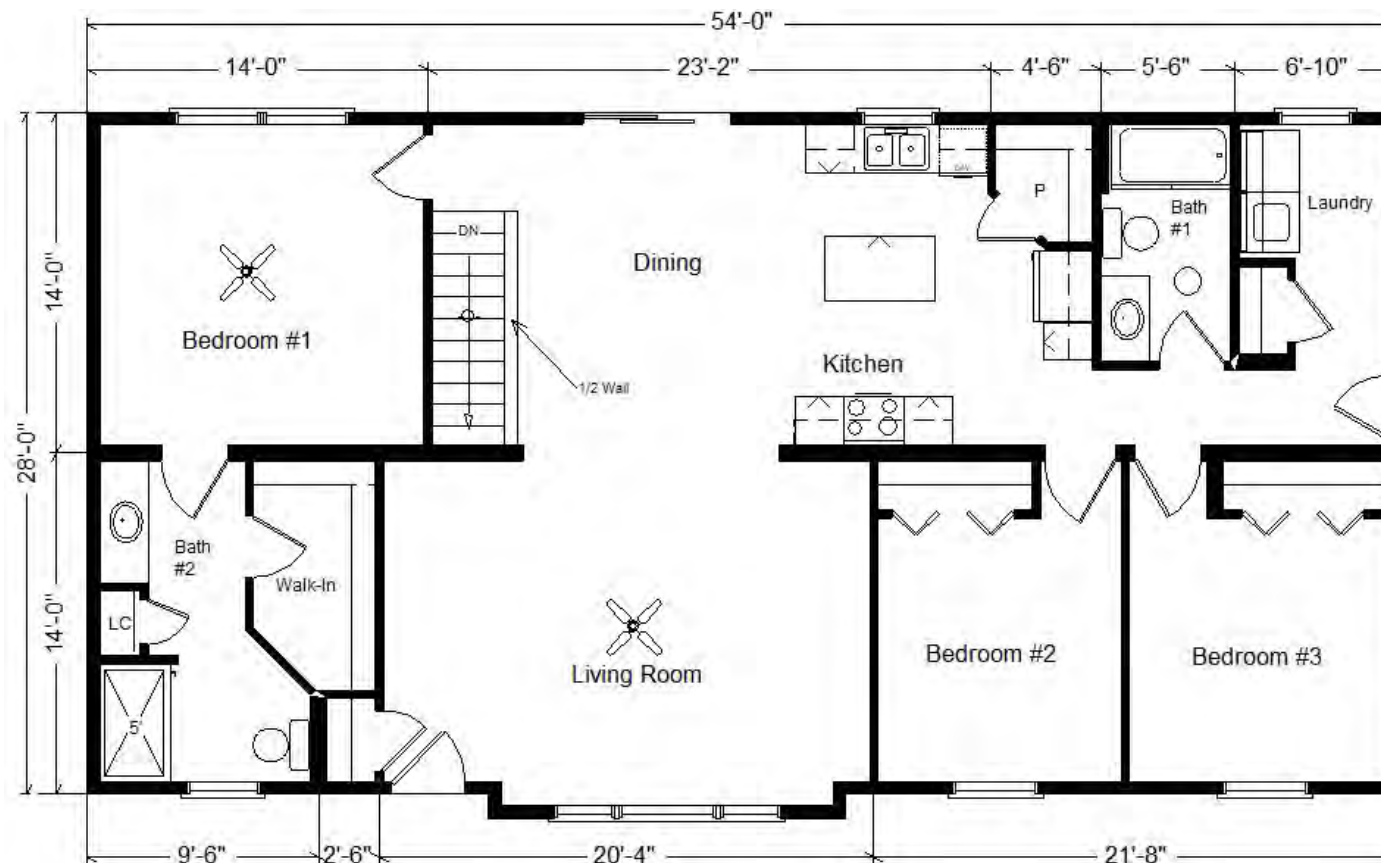


Base Price: \$160,514.00

This Home Displays The Following Options:

5/12 Roof Slope	2,268.00
Double Gable	3,450.00
1' Bump-out Living Room	859.00
Vaulted Ceilings (K,D, LR)	1,445.00
Premium Color Siding	856.00
Window Shutters (x7)	658.00
Pella 250 Series DH Windows	3,769.00
Window Grilles (x10)	1,030.00
6' Pella Enc. Patio Door (disc)	1,850.00
Carpet Upgrade (City Space)	1,680.00
6 Panel Oak Doors (x10)	2,550.00
Recessed LED Lights (x4)	260.00
Dimmer Switch	39.00
Wire for Elect. Range	175.00
Wire for Future DW	75.00
Wire for Future Microwave	75.00
DHI Paddle Fan/Lights (x2)	398.00
Laundry Area w/BB Cabinets	860.00
Extra 3/4 Bath	2,450.00
5' Shower Upgrade	250.00
Shower Doors (Bath #2)	575.00
Cultured Granite Vanity Top (Bath #2)	367.00
Hi-rise Kohler Toilet (Bath #2)	215.00
Vanity Drawer Bases (x2)	140.00
Select Vanity Base Option (x2)	452.00
Brushed Nickel Bath Package	795.00
Edison Vanity Lights (discontinued)	
Brellin Purestyle Cabinets (disc.)	4,326.00
Select Cabinet Option	680.00
Benton Birch Island and Vanities	-216.00
Hi-Macs Acrylic Kit. Countertops	4,109.00
Pulldown Kohler Faucet (K560-BN)	295.00
Crown Molding (23')	460.00
Upgrade Front Door (S866MNT)	907.00
Suntube (Bath #1)	795.00

Total With Options Shown: \$199,411.00



**Reverse Plan
W/Optional
Garage**



Price Includes: Crane Setting, All Blueprints, R55 Ceilings, R21 Exterior Walls, Kohler Plumbing, Pella Windows, 200 Amp Service, All Applicable Tax and Much More!!

***See Sales Rep For Any Applicable Delivery Fees**

MN #BC146710

Feb25 2025

Color Information

Charcoal Siding, White Trim, Driftwood Shingles, White Shutters, SS U6040L Sink, Black Unvented Rangehood, Saddle Oak Trim & Doors, Toasted Anitque Kitchen Cabs, Saddle Island and Vanities, Bisque Baths, City Space Carpet, #CDL77-06 Graphite Revwood, White Pella Dbl-hung Windows, Venetian Sand HiMacs Kitchen Countertops w/Bevel Edge, BN Hardware