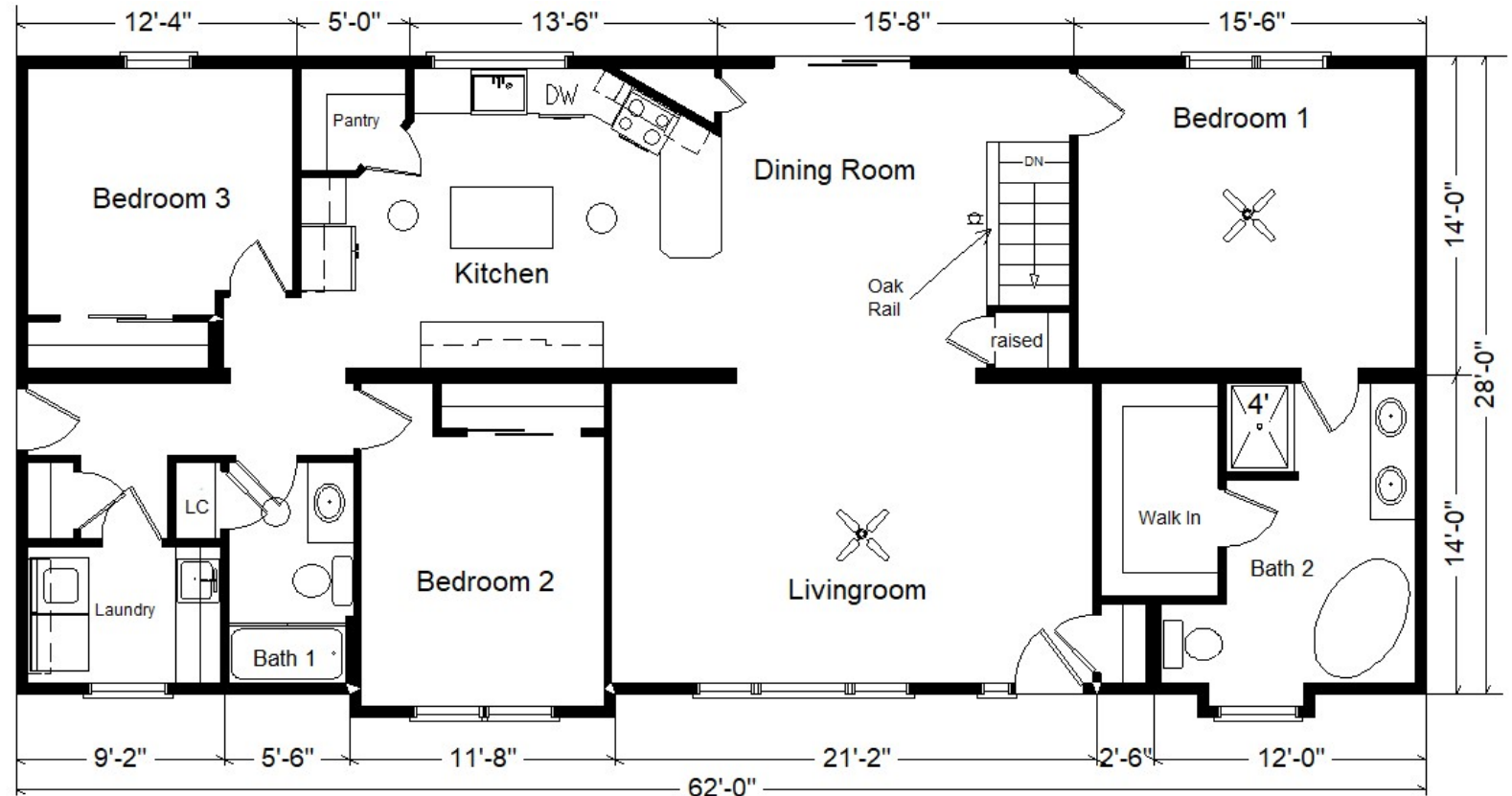


Base Price:	\$176,232.00
6/12 Roof Slope	3,038.00
9' Ceilings	3,438.00
Premium Color Vinyl Siding	850.00
Window Lineals	1,078.00
2 Medium Gables	2,912.00
Extra Roof Detail	215.00
1' Small Bump-Out Window (Bath #2)	520.00
1' Large Bump-out BR Window	859.00
RV Revwood Upgrade	451.00
**Tile-look Vinyl Plank (Bath #2) disc.	737.00
Vaulted Ceilings (LR, DR, Kitchen)	1,655.00
Upgrade 3 Panel Oak Doors (x16)	4,080.00
8' of Prefinished Oak Railing	1,560.00
Floor Outlet By Railing	158.00
Laundry Area w/Benton Wall Cabinets	985.00
6' of Benton Cabinets with SS Laundry Sink	1,440.00
Wire for Electric Range	175.00
Wire for Future DW	75.00
Wire for Future Microwave	75.00
Paddle Fan Light (x2)	367.00
Extra Pendant Light Over Island	65.00
Brushed Nickel Bath Package	935.00
Extra 3/4 Bath	2,450.00
Kohler Hi-rise Toilet (Bath #2)	215.00
Stand Alone Tub/BN Faucet	4,450.00
Double Sink Vanity	725.00
Cultured Granite Vanity Tops	698.00
Vanity Base Drawers (x3)	490.00
Show er Door (Bath #2)	575.00
Elongated Toilet (Bath #1)	62.00
Benton Birch Cabinets (disc.)	3,430.00
Select Cabinet Option (Kit. only)	680.00
8.5' Extra Base Cabinets	1,828.00
6' Extra Wall Cabinets	1,008.00
Kitchen Draw er Base	297.00
Ceramic Tile Backsplash	595.00
Crown Molding Above Kit Cabinets (31')	620.00
15" Deep Wall Cab. w/Glass Doors	462.00
Custom Cabinets	431.00
Country Apron Sink	1,224.00
Pull-down Kit. Faucet (K560-CP)	255.00
Frosted Pantry Door	869.00
Kitchen Picture Window	721.00
Rangehood Vented to Exterior	200.00
Suntube (x3)	2,385.00
Pella 250 Dbl-hung Windows	4,444.00
Pella 250 6' Patio Door	2,896.00
Shades Between Panes Patio Door	1,314.00
Footbolt for Patio Door	65.00
3' Transom Windows (x2)	964.00
Front Door, Sidelight & Transom	5,261.00
Total w/Options Shown:	\$241,514.00

Model #1
28x62 Ranch 1,736 sq. ft.

Design Homes, Inc.

Fond du Lac, WI
(#11024 -1-6)



Color Information

Espresso Siding, White Trim, White Corners, Moire Black Shingles, White Lineals, White \$& Bisque Baths, #780 & 231 Vanity Tops, Bark Carpet, LX102 Vinyl, 990 Russett LVP in Bath #2, Fawn Chestnut Mohawk Revwood, Hazelnut Oak Trim & Doors, SS Vented Rangehood, Pella 250 White Dbl-hung Windows, Perlato Granite Countertop. Burlap Stained Cabinets, Brushed Nickel Package. Coffee Stained Front Door

Prices are Subject
to Change

MN #BC146710

March 2025

**Price Includes: Crane
Setting, All Blueprints,
R55 Ceilings, R21
Exterior Walls, Kohler
Plumbing, Pella
Windows, 200 Amp
Service, All Applicable
Tax and Much More!!**

***See Sales Rep For Any
Applicable Delivery Fees**