

Base Price:	\$143,354.00
This Home Displays The Following Options:	
5/12 Roof Pitch	2,268.00
8' Covered Porch	18,367.00
Northwinds Shake on Front Gable	353.00
Premium Color Vinyl Siding	695.00
Window and Door Lineals	1,761.00
Upgrade Carpets	763.00
Mowhawk Rewood in LR	1,393.00
Gas Fireplace	8,220.00
Outside Chimney Chase	1,350.00
Vaulted Ceilings (LR,K, Din, Porch)	1,324.00
DHI Paddle Fan/Light	220.00
Wire for Electric Range	175.00
Laundry Area w/Westbury Cabinets	985.00
Extra 3/4 Bath	2,450.00
Upgrade 5' Shower	250.00
ORB Bath Hardware Package	795.00
Cult. Granite Vainty Tops	405.00
Vanity Drawer Base (Bath #1)	226.00
Kohler Pull-down Kit. Faucet	295.00
Westbury Oak Cabinets (disc.)	2,858.00
APC Cabinet Option in Kitchen	1,793.00
Crown Molding in Kitchen (18')	360.00
36" Wide Kit. Island Top	90.00
Subway Tile Kit. Backsplash	595.00
WP SS Microwave	464.00
Vented Microwave to Exterior	200.00
WP SS Dishwasher (WDF330)	754.00
Suntube (Bath #1)	795.00
Octagon Window (Bath #2)	617.00
2 Hi-rise Kohler Toilets (K4199)	430.00
Pella 250 Dbl-hung Windows	4,044.00
Extra LR Windows (by FP)	1,524.00
9' Pella 250 Patio Door	5,423.00
Paint One Side Exterior Doors	458.00

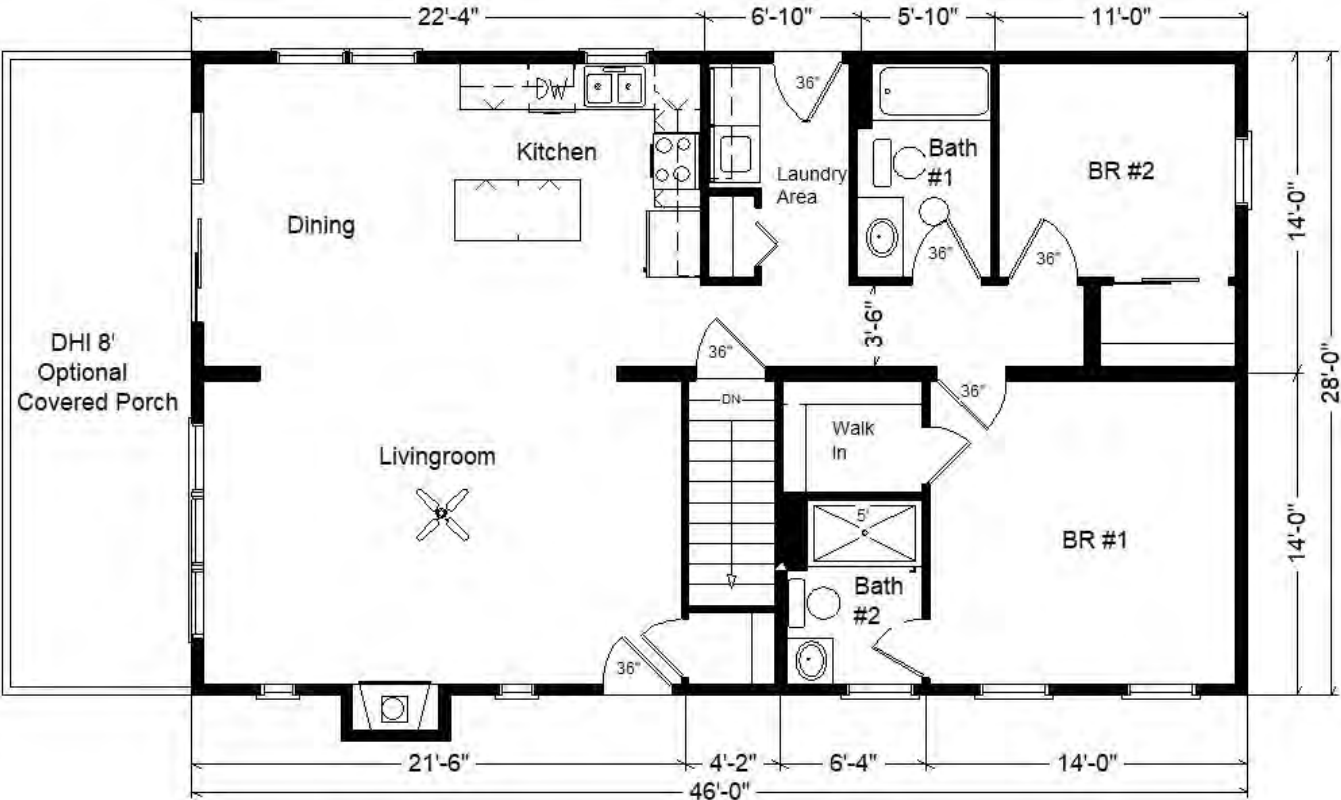
Total With Options Shown: \$206,054.00

Model #5
28x46 Ranch
1,288 sq. ft.
w/Optional 8' Porch

Design Homes, Inc.
Eldridge, IA
(#10910 -9-6)



MN #BC146710



Color Information
Expresso Siding, Almond Trim,
Weatherwood Shingles,
Sav. Wicker Lineals, Sav.
Wicker Northwinds Shake on
Porch Gable, Perlato Granite
3522-58 Countertops,
SS Appliances, Townhouse
Carpet, Outer Banks Mowhawk
Rewood, SS Sink, Natural
Oak Trim & Doors, Natural
Cabinets, Pella 250 Dbl-hung
and Casement Almond
Windows, White Baths, 688
Vanity Tops, Caledonia FP
Front, Saddle Decking

Reverse Plan

**Price Includes: Crane
Setting, All Blueprints,
R55 Ceilings, R21
Exterior Walls, Kohler
Plumbing, Pella
Windows, 200 Amp
Service, All Applicable
Tax and Much More!!**

***See Sales Rep For Any
Applicable Delivery Fees**

Feb25 2025

Prices are Subject
to Change

