

Base Price:	\$187,837.00
This Home Displays The Following Options:	
6/12 Roof Slope	3,234.00
Weathershield Windows (disc.)	7,691.00
1' Bump-out LR Window	858.00
Large Gable	1,995.00
Upgrade Carpet (Everything Nice)	2,213.00
Wood Floor (Foyer/Hallway)	1,133.00
6 Panel Oak Doors (x10)	2,550.00
Interior Fr. Doors w/Glass	1,550.00
Gas Fireplace	6,785.00
Vaulted Ceilings (LR, DR, Kit)	1,806.00
Premium Color Siding	1,242.00
Shutters	564.00
Northwoods Shake Siding in Gables	480.00
Paddle Fan Light (x2)	398.00
4 LED Flush Lights on Dimmer	299.00
Hi-Definition Kit. Countertops	393.00
36" Wide Snack Bar	71.00
Pull-down Kit. Faucet (K560-BN)	275.00
Cultured Granite Vanity Top (Bath #2)	441.00
WP Microwave (WMH310)	394.00
WP Dishwasher (WDF320)	674.00
Laundry Area w/Cabinets	750.00
Laundry Sink/Base Cabinets	894.00
Rubbed Bronze Bath Package	920.00
Extra 3/4 Bath	2,450.00
Double Sink Vanity	725.00
5' Shower	250.00
Recessed Medicine Cabinets (x2)	130.00
Vanity Drawer bases (x3)	490.00
Upgrade Vanity Bases to APC Option	2,368.00
Elongated Toilet Bowl (Bath #1)	62.00
Westbury Oak Cabinets (disc.)	2,858.00
2' of Extra Base Cabinets (APC)	532.00
Crown Molding (25')	500.00
APC Kit. Cabinet Option	1,793.00
Ceramic Tile Backsplash	545.00
Suntube (x3)	2,235.00
Upgrade Entry Door (S684TRC)	736.00
Sidelight 1/2 Glass (S692TRC)	1,267.00
Paint 1 Side Doors and Sidelight	596.00
6' WS Patio Door (disc.)	2,628.00

Total With Options Shown: \$245,612.00

Design Homes, Inc.

Edgerton, WI
 (#10498 -6-4)

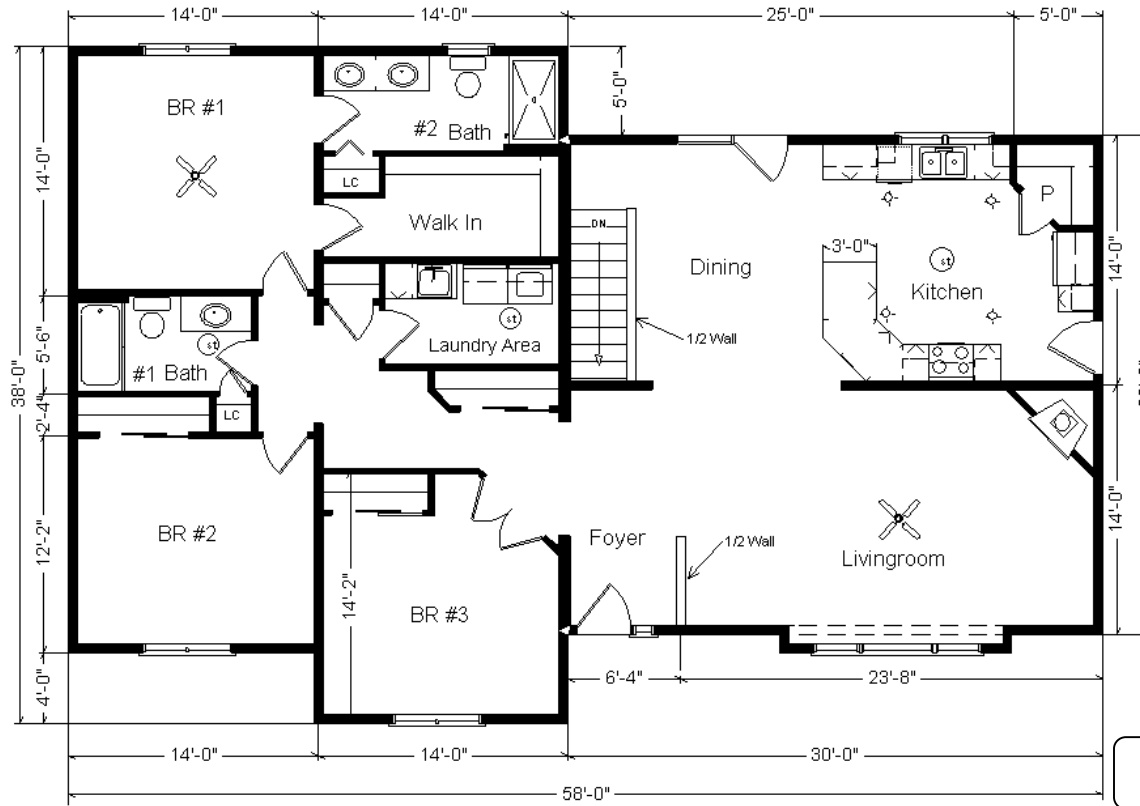
MN #BC146710



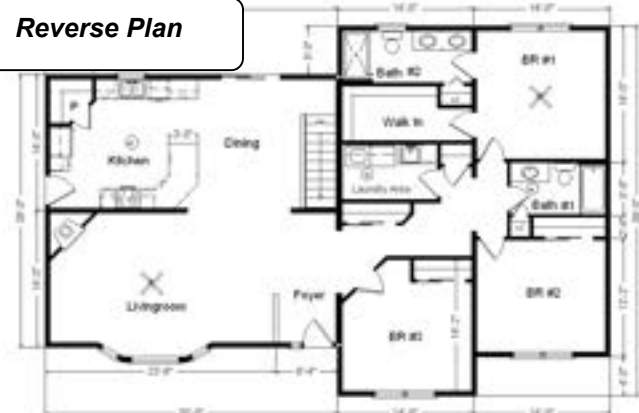
Prices are Subject to Change

Model #4
28x66 4-sec. Ranch 1,848 sq. ft.
**All 4-Section Ranch Orders Are Subject To Approval*

Color Information
 Hearthstone Siding, Almond Trim, Sav. Wicker Northwoods Accents, Moire Black Shingles, Black Shutters, White & Bisque Baths, #432 and #250 Vanity Tops, 91180 Vinyls, SS Kit. Sink, Natural Oak Trim & Doors, Black Microwave and Rangehood, Natural Oak Cabinets, Bamboo Carpet, Fall Canyon Wood Flooring, Cameo WeatherShield Casement Windows w/Autumn Harvest Interiors, Golden Mascarello Countertop, Absolute Black FP Front



Reverse Plan



Price Includes: Crane Setting, All Blueprints, R55 Ceilings, R21 Exterior Walls, Kohler Plumbing, Pella Windows, 200 Amp Service, All Applicable Tax and Much More!!
 *See Sales Rep For Any Applicable Delivery Fees

Jan. 2023