

Model #3

28x48 Prow Ranch 1,288 sq. ft.

Design Homes, Inc.

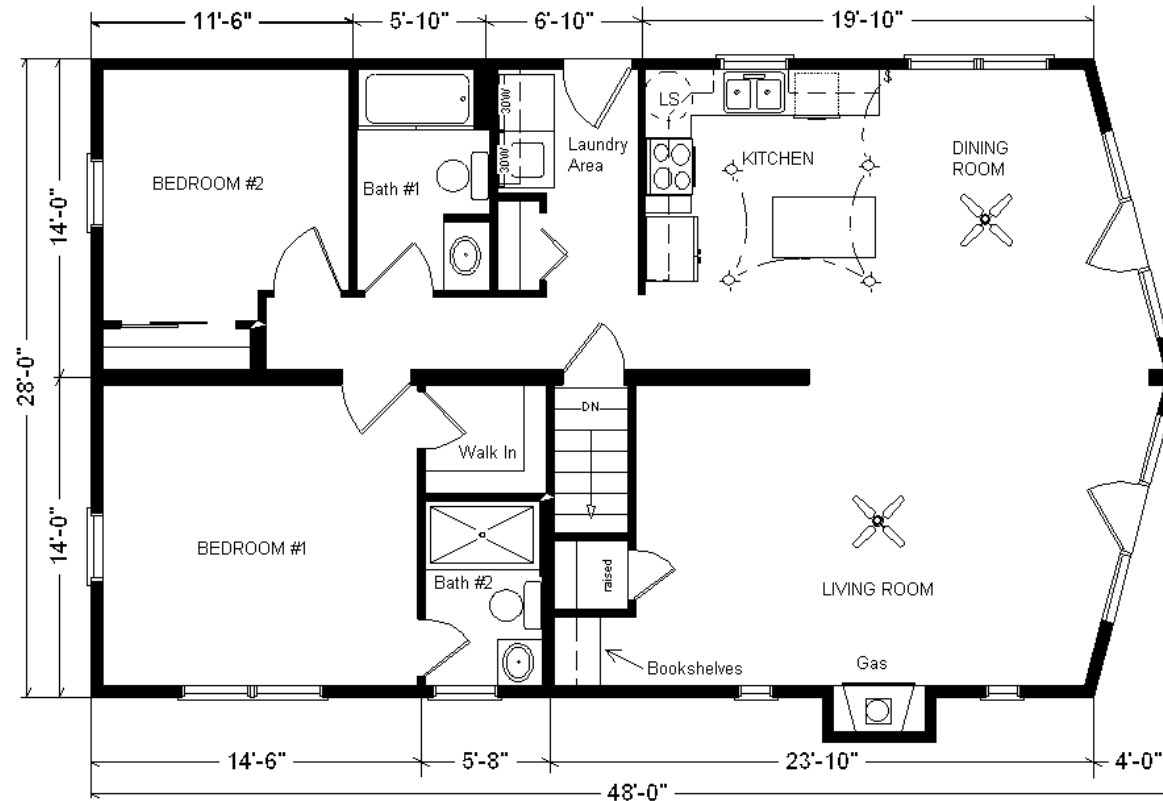
Edgerton, WI
(#10492 -6-6)

Prices are Subject
to Change



Base Price:	\$147,645.00
This Home Displays The Following Options:	
Metal Roof	6,912.00
Outside Chimney Chase	1,350.00
Gas Fireplace	6,990.00
Vaulted Great Room w/Par. Truss	1,883.00
LP Siding w/Diamond Coat Finish	9,415.00
Window and Door Lineals	1,799.00
Upgrade Carpet (E. Nice)	1,138.00
Pioneer Hickory Bookshelves (LR)	721.00
Wire for Electric Range	175.00
Ceiling Fan w/Lights (x2)	398.00
4 LED Can Lights on Dimmer (Kit)	299.00
Extra 3/4 Bath	2,450.00
Rubbed Bronze Bath Package	795.00
5' Shower Upgrade (Bath #2)	250.00
Shower Doors (Both Baths)	1,150.00
Vanity Drawer Base (Both Baths)	264.00
Cult. Granite Vanity Top (Bath #2)	147.00
Recessed Medicine Cabinet (x2)	140.00
Kohler Hi-rise Toilet (Bath #1)	215.00
Grab Bars (x2 Bath #1)	194.00
Laundry Area w/Hickory Cabinets	940.00
Pioneer Hickory Cabinets (disc.)	2,775.00
Ceramic Tile Backsplash	595.00
Crown Molding (19')	380.00
Hi Definition Kit. Countertops	275.00
Swan Quartz Sink (Nero)	549.00
Kohler Pull-down Kit. Faucet	275.00
Pella Lifestyle Windows	6,351.00
9' Trapezoid Windows (x2)	7,422.00
9 Hinged Pella Patio Doors (x2)	20,260.00
Exterior Door Credit	-650.00

Total With Options Shown: \$223,502.00

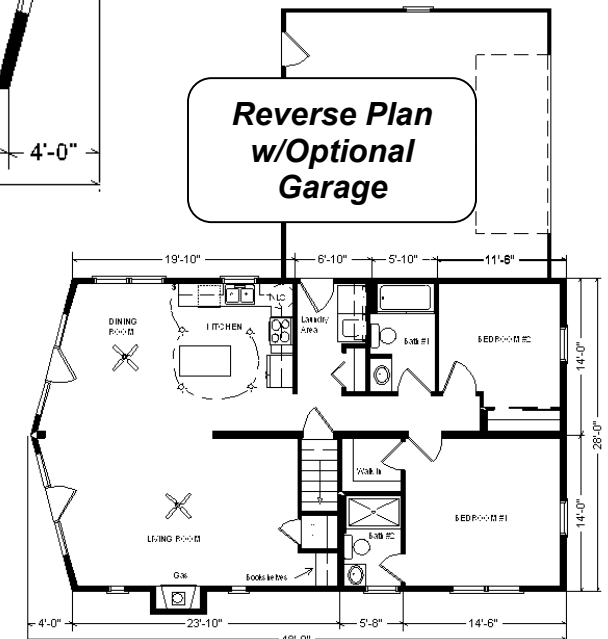


MN #BC146710

Color Information

LP Seal Siding, Almond Trim,
Oyster Lineals, Light Stone Metal
Roof,, Sand Carpet, Bisque Baths,
#430 & #259 Vanity Tops,
Black Appliances,
Antique Mascarello Countertop,
Sand Carpets,
91160 Vinyl Flooring, Pella
ProLine Windows w/Golden Oak
Interiors, Caledonia FP Facade,
Pioneer Hickory Natural Cabinets,
Rubbed Bronze Package

Reverse Plan w/Optional Garage



**Price Includes: Crane
Setting, All Blueprints,
R55 Ceilings, R21
Exterior Walls, Kohler
Plumbing, Pella
Windows, 200 Amp
Service, All Applicable
Tax and Much More!!**

***See Sales Rep For Any
Applicable Delivery Fees**

March 2025

*Appliances
shown are
optional and not
included in
Total price.*